

Construction Route to Gold

Period 13



15 April 2025

What is Construction Route to Gold?

Construction Route to Gold is a performance measurement initiative within the Southern region Capital Works supply chain. The initiative aims to promote collaborative working behaviours, reduce costs caused by re-work and embed a culture of continuous improvement within the rail industry.

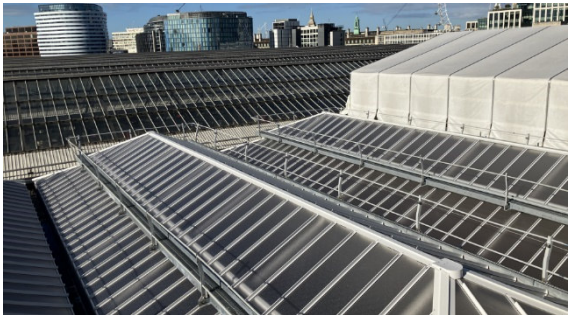
167051 - Waterloo Station Roof Renewal - highest scoring site for Period 13

What are we doing: The Waterloo Roof renewals project is replacing the glazing panels in the 25 bays of the station concourse alongside the 12 bays of the porte cocheres that cover Cab Road outside the station. The project will also deliver a repainted roof structure inside the station concourse, new lighting, improved maintenance access and localised steelwork repairs. In order to carry out these works, the project has erected scaffolding to the structures, including the suspended scaffold deck above the scaffold that allows works to take place in the daytime and is moved along to the next bay as each bay is completed.

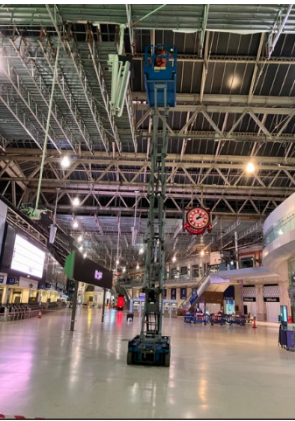


What are the Benefits to the Passenger: The new glazing panels will provide a lighter and brighter station for members of the public, as well as offering improved acoustic performance for passenger announcements. The new roof will also reduce the safety risk associated with managing the old glazing panels, that need regular inspection and remedial works as well as improving Network Rail’s sustainability performance with more energy-efficient lighting.

The Team: What makes the site and the team the highest scoring site in Southern: *Derek Johnson (NWR Construction Manager) and Harry Watkins (NWR Project Manager) comment:* Erecting a crash deck to the whole of the roof structure to protect the passengers, whilst the roof works are being carried out Day and Nights, is quite an achievement, given the challenges of working in a busy and restrictive environment. Due to physical constraints and the lack of storage space has been a major logistical achievement to ensure materials are available at the right time and in the right place.



In March, the project team recently held a joint review of working practices with the Octavius, its suppliers and Network Rail on how to improve the safety performance of the project. This has improved the understanding of the needs of other trades, which has seen improved collaboration between those on site. There have also been joint walk outs held between Network Rail and Octavius with the aim of avoiding complacency, as the project has been on site for two years



Octavius Ltd		Network Rail	
Project Manager	Matt Wilson	Project Manager	Harry Watkins
Site Manager	Frankey Twitchett and Alexandru Baboia	Scheme Project Manager	Hashim Shaikh
Senior Site Engineer	Eleni Tsatlidou and Helen Wills	Construction Managers	Dave Meager / Derek Johnson
Supervisors	Ujjal Khaliq	DPE	Karl Kan

Top scoring Gold & Silver sites by Route/ Discipline are:					
SID – B&C	182159 S-100176 - Chichester Stn - Canopy ref	VolkerFitzpatrick Ltd	Enhancements	168071 - AFA Hither Green	BAM Ltd
SID – E&P	186367 – NSCD: Hardham Sub	Octavius Ltd	CP6 Tail – B&C	167051 - Waterloo Stn Roof Ren	Octavius Ltd
SID - Sig	None this period	AtkinsRealis Ltd	CP6 Tail – E&P	181524 S-100479 - Farnborough N	Octavius Ltd
SID -Track	182554 - Polegate to Hampden Park	Volker Rail Ltd	CP6 Tail - Sig	163353 - Parks Bridge bespoke Re-	Siemens Ltd
SID - WD	None this period				
If you would like a full score summary report for all Southern region Capital Works sites, please contact: Paul Burr .					

GOLD SITES

Octavius Ltd

Waterloo Station Roof Ren

Octavius Ltd

Waterloo Station Roof Ren

Siemens Ltd

Parks Bridge bespoke Re-signal

Volker Fitzpatrick Ltd

Chichester Stn - Canopy refurb

Volker Rail Ltd

Polegate to Hampden Park

SILVER SITES

Alstom Ltd

Farncombe to Petersfield

BAM Ltd

Hither Green AFA

Octavius Infrastructure Ltd

Farnborough North LX
Lymington Viaduct
Ryde Pier Renewal
HV Cable F2211 Renewal
NSCD:
Ebbsfleet,
Fishbourne,
Eynsford,
Marden,
Cannon St,
Hardham,
Cranmore

VolkerFitzpatrick Ltd

Sherrington Viaduct
Canterbury Viaduct
Hungerford Bridge

Volker Rail Ltd

Wimbledon
Faygate to Little Haven

Everyone home safe every day