

# Safety Alert

## Lighting Unit Fall Onto a Live Carriageway

8 April 2024

### Background information

Whilst driving through the A27 Southwick Tunnel, a member of the public reported debris in the carriageway. Upon removal and investigation, it was found to be a tunnel luminaire which had fallen from the soffit bracketry. No reports of damage were made to vehicles or further infrastructure.

An emergency carriageway closure went ahead to enable electricians to make the hanging electrical cable safe. A visual inspection of tunnel luminaires was also carried out.

Images from site indicate the cause of the failure to be bimetallic corrosion due to incorrect material design between luminaire fixtures and soffit bracketry. The corrosion from the stainless steel and aluminium reaction is not thought to be an isolated event within this tunnel. Therefore, emergency works are being carried out to secure the luminaires as a short-term solution.



### Lessons Learnt

- Check that designs specify fixings that prevent bimetallic corrosion. This is not limited to luminaires or tunnel assets.
- Raise awareness of the need to inspect safety critical fixings and hidden defects.
- Review 'as-built' information, Operation and Maintenance Manuals and undertake inspections to confirm the information held on assets is accurate.



NHa348

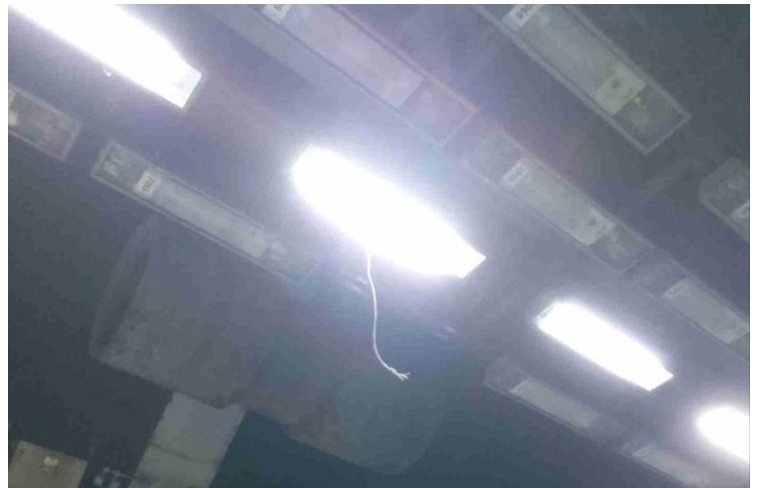
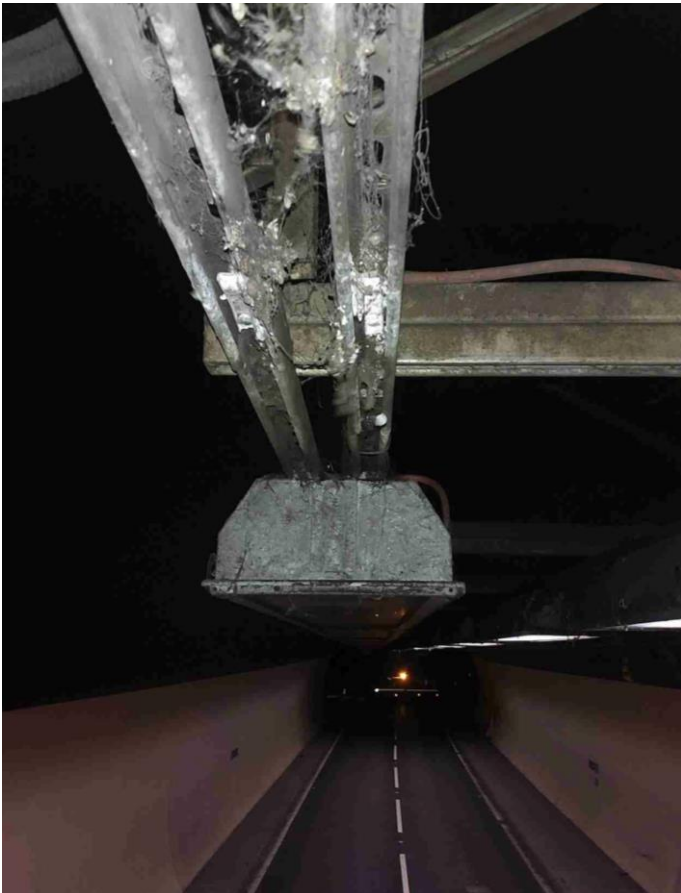
If you have any queries about this safety alert information announcement or any other safety announcement then please contact [HealthSafety&Wellbeingteam@nationalhighways.co.uk](mailto:HealthSafety&Wellbeingteam@nationalhighways.co.uk)

# Safety Alert

## Lighting Unit Fall Onto the Carriageway

8 April 2024

Additional images of the failed luminaire and the bimetallic corrosion



NHa348

If you have any queries about this safety alert information announcement or any other safety announcement then please contact [HealthSafety&Wellbeingteam@nationalhighways.co.uk](mailto:HealthSafety&Wellbeingteam@nationalhighways.co.uk)

home **safe**  
and **well**