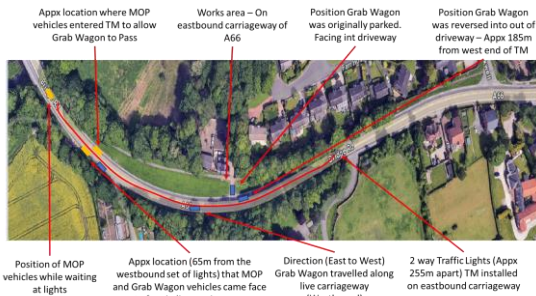
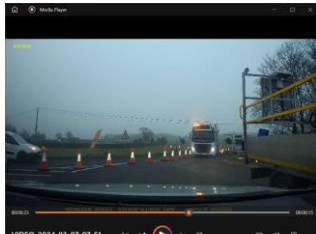


STOPThink! HiPoNM TM events



22nd Feb - Google Maps image with layout of scheme depicted.



7th Mar - CCTV image showing Vac Ex entering TM and MOP vehicle stopping in live lane



What happened?

Over the past 3 months our SDF Framework has unfortunately experienced an increase in the number of TM related events. Three of these have been High Potential Near Misses (HiPoNM) events.

On 22nd February, a supplier Grab Wagon left site via TM, exiting through cones and came face to face with MOP vehicles traveling in the opposite direction as they were on a green light of the Two Way traffic light set up. These vehicles had to enter the site to allow the Grab Wagon to pass.

Then at another site, on two separate occasions on 7th and 11th March, site vehicles (a Vacuum Excavator, then a Pick Up) entered site through traffic management which was not a designated access location and was on a closed section of road, bypassing the road closed signs. The first incident resulted in a MOP vehicle having to stop in the live lane (off-slip from the A1) while the Vac Ex entered the site.

Impacts

- Resulted in three TM Incursion/High Potential Near Miss events
- Potential for RTC incidents

Immediate action

All Octavius schemes are to ensure:

1. Their traffic management, including access and egress to arrangements, are planned, installed and briefed according to procedural and guidance requirements
2. TM is installed as per specifications / drawings
3. A Traffic Management Plan [Traffic Management Plan Template - INF-SHE-TPT-9100-3020](#), is in place, regularly updated, included in the CPP as an attachment and shared with suppliers
4. TM Plans and other related scheme documents (i.e. Induction, WPP/RAMS, TBS,) detail scheme specific arrangements for entering accessing TM
5. Drivers induction material is provided to suppliers before their arrival to site, and obtain confirmation of receipt
6. Clear methods of communication between traffic heads (exp. radios) and site (i.e. where exiting TM is required) are in place
7. All site personnel are regularly briefed on these arrangements, and any changes

Please confirm that this alert has been communicated on projects and all controls are in place by emailing shea@octavius.co.uk.