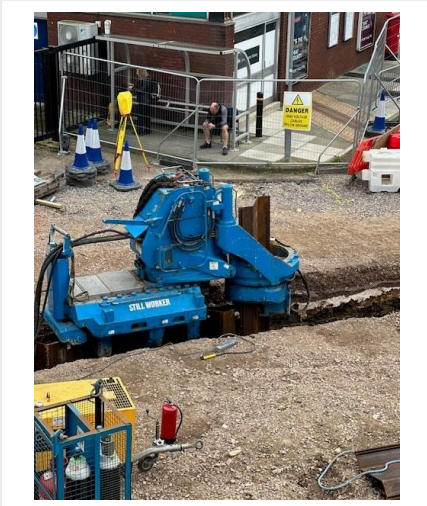


STOPThink!

Gloucester Station Cable Strike



Gloucester Station Pile Press & Trench



Damage to LV Cable Sheath

What happened?

As part of the Gloucester station forecourt and underpass improvement works, Sheet Piling UK (SPUK) were installing a number of sheet piles using a Giken pile press with a lead trench.

On reaching the end of one line of piles, the piling rig needed to be turned to install a further line of piles at a right angle. This should have been done using a reaction stand but the counterbalance weights for this had been previously off hired. It was decided that an extra dummy pile would be installed to facilitate this operation.

The leader trench was widened using an 8-ton excavator. At a depth of approx. 800mm while removing some rocks from the excavation the banksman noticed signs of a cable. Work was stopped and on closer inspection it was discovered that the plastic sheathing of a 450v electrical cable feeding the station had been damaged. This LV cable was not thought to be running this close to the piling line, however, its exact location had not been proven in line with **STOPThink! Prove It.**

Impacts

- Piling works stood down for the day to enable National Grid to fix the cable. Cost to the business in stand down charges for the piling rig and National Grid call out.

Immediate action

1. Works Stood down and service owner contacted to attend site to fix cable.
2. All staff on site re-briefed on Octavius safe digging expectations.
3. Dummy piles installed inside the line of piling in an area previously proven to be free of services.

Octavius staff and our suppliers must confirm that they:

- Ensure a clear and workable safe system of work (SSoW) is in place for all activities **STOPThink! Fundamentals - SSoW**
- Where change to the planned SSoW occurs, these changes are fully risk assessed and captured on the POWRA, **STOPThink! Fundamentals - POWRA**
- Where excavation works are being undertaken all cables must be located, clearly marked, and protected. **STOPThink! Prove It - Paint & Protect**
- While excavating CAT scanning should be performed in all modes initially, including the Genny, and at regular intervals throughout the dig. **STOPThink! - Prove It, Paint**

