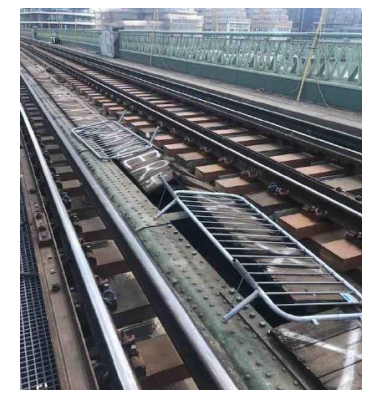


# STOPThink!

## Safe access on the transport infrastructure



Example of degraded timber on a Bridge

### What happened?

In recent years, there has been a number of incidents where personnel have been injured whilst accessing the transport infrastructure.

This has been as a result of unprotected openings in the structure and failed parts of the structures e.g. rotten timber walkways or corroded steel sections.

We have also seen similar events in the highways industry with the addition of failed structures and hidden traps like unprotected manhole chambers and other voids.

Some of these incidents have resulted in significant injury to the workforce such as severe lacerations, fractures, and sprains and strains. These is also a risk of tools and equipment dropping through these gaps and causing injury to others or damage below.



Missing void protection on highway infrastructure

### Please consider the following points whilst accessing the infrastructure:

1. Only use designated walkways and access routes.
2. Visually and carefully check all areas before accessing the infrastructure.
3. Record any additional hazards on your POWRA and ensure everyone working on site are aware of them.
4. Ensure sufficient lighting is in place to safety access and work.
5. Check behind you before stepping backwards.
6. Avoid stepping on covers and lids – they may not take your weight. If you must step on them, check they can take your weight and are stable before stepping onto them.
7. If you see unsafe infrastructure: mark and protect it, only if it is safe to do so, make other members of the workforce aware and report is so it can be rectified.

