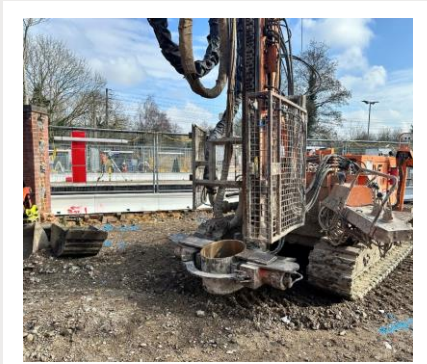


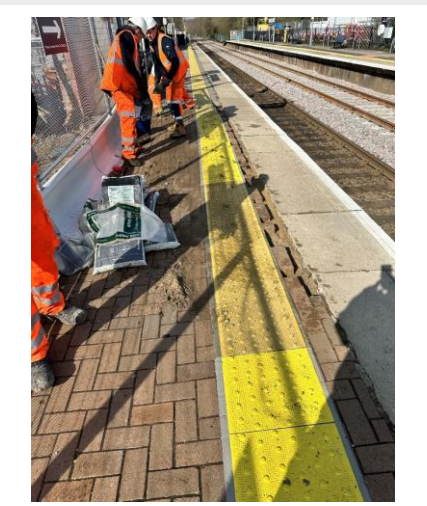
# STOPThink! Piling Incident



Block paviours adjacent to the piling location



Piling rig utilised at time of incident



Repairs being undertaken to platform

## What happened?

A Klemm 709 2 SFA piling rig was being moved into position at the rear of the railway platform 2 (down line) at Farnborough North station. A banksman was guiding the operation.

The pot which guides the augers during installation, caught the rear of a line of block paviours which form the platform surface. The paviours were pushed towards the track which subsequently pushed 11 copers towards the track.

Trains were immediately stopped by contacting the signaller. The MOM attended site and took a line block of both lines.

Repairs were undertaken to realign the copers and ensure that the platform was safe for trains and travelling public.

## Impacts

- Train delays were caused by the need to stop trains which in turn impacted passenger journeys.

## Immediate action when working near to critical infrastructure:

- Where works are using items of construction plant, a robust plan must be in place to ensure that clear communication can be made between the banksman and the operator of the equipment.
- When working on rail projects with any construction plant Duplex communication equipment (DECT Comm) must always be used for this purpose.
- The risk assessment should consider how the works could impact the operational infrastructure and suitable control measures should be implemented.

Please confirm that this alert has been communicated on projects and all controls are in place [shea@octavius.co.uk](mailto:shea@octavius.co.uk).

