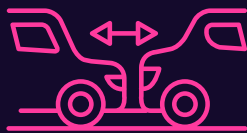




Allow extra time to demist your windscreen and clear all your vehicle.



Observe speed limits and adhere to braking distances appropriate for the the weather conditions.



Allow extra distance between you and other road users.



Wear sunglasses in bright sunlight.



- Check tyre pressure (refer to the vehicle manual).
- Check tread depth (1.6mm is the legal minimum).
- Make sure wipers effectively clear the screen.
- Check windscreen washers are working and fluids are topped up with 50% water and 50% anti-freeze screen wash.
- Check all lights are working and clean.
- Check engine coolant/ anti-freeze.
- Keep a de-icer, ice scraper and warm hi-vis clothing in your vehicle.