



octavius



**STOP.**  
**Think!**

February 2023

Make better  
decisions.

[Octaviusinfrastructure.co.uk](https://www.octaviusinfrastructure.co.uk)

# Content

Section	Page No.
<b>Introduction</b>	
Gavin Pritchard	3
<b>STOPThink! Moments</b>	
Potential head injury	4
<b>Looking after our planet</b>	
Ecological survey calendar	5
<b>Learning and sharing</b>	
Lean learning sessions	6
Preventing waste defects on your project	6
Rail Wellbeing Wednesday	7
Safer working with National Highways	7
Supply Chain Sustainability School Workshops	8
Driving safely on a Smart Motorway	8
Failure of Safe System of Work leads to fatality	9
<b>Sharing our successes</b>	
Celebrating our people – Colleague Awards	10
Significant milestone completed at EKFB site in Aylesbury	12
Official opening ceremony for A46 Binley flyover	13
Surbiton station podium opens for passengers	14
ISO 44001 Collaborative recertification success	15
National Highways Industry Awards shortlist	15
Period 9 Gold rated sites	15

Section	Page No.
STOPThink! training for Eastern Highways Alliance	16
<b>Looking after yourself and each other</b>	
Health and wellbeing topic of the month – Giving Back	17
<b>Safety statistics</b>	
Improvement Opportunities	19
SHEA performance summary – January 2023	20
<b>What good looks like</b>	
The Chelmsford North East Bypass Thrive Report	21
The Flitwick transport interchange Thrive Report	22
The A46 Binley Thrive Report	23
The Hertfordshire Framework Thrive Report	24
One Team Wessex Thrive Report	25
The Gade Valley Thrive Report	26
The NE & NW Service Delivery Framework Thrive report	27
<b>Toolbox Talk</b>	
Nesting birds	28
<b>External alerts</b>	
People and plant incident – struck by excavator bucket	29
Testing and calibration for Live Line Indicators	30
Tractor trailer towing incident	31
Wessex lineside buildings safe working practice	32

# Introduction

Gavin Pritchard



Welcome to the February Edition of our STOPThink! Cascade Briefing. It is both an honour and a pleasure to be invited by our CEO John Dowsett to scribe my first introduction to this great publication. We are all overwhelmed by emails, Teams meetings and the ever-increasing pressures of daily life, but I do encourage you to set aside some time to look through this month's edition, which continues to be packed with great articles and useful information. These are provided not only through the lens of Octavius, but also through sharing the learning that we have received from others. For me that is what makes this publication unique.

## Continuous learning, driving safe outcomes

After a challenging last quarter of 2022, it is encouraging to report that 2023 has started on a much quieter note in terms of incidents across our projects. We recently held a dedicated workshop for our leaders from across the business to deep dive into these incidents which, whilst thankfully not, could have resulted in more serious consequences. Whilst very different circumstances were presented by the incidents some clear themes came out of the discussions.

The importance of clear communications between all parties and at all stages of the project. The need to make time to properly plan the works, understand exactly what is needed, the risks involved and the required level of competence for all tasks. How to react when changes occur, the reassessment, reporting and communication required.

These themes are clearly linked to our STOPThink! fundamentals, the 8 key ingredients that we have stipulated must be in place to ensure the safe delivery of all work that we undertake. This demonstrates that we must continue to gather such learning to help us further develop the ways we put our people to work more safely. Please always feel confident to challenge any unsafe behaviours or procedures, share your observations and thoughts for improvement, and help us to drive safe outcomes across our business, with the sole focus of everyone going home safely at the end of every shift.

## Giving back to society

Within the "What good looks like" section of the cascade you will find unashamed reporting around the extent to which we as a company are generating social value across our frameworks and projects. We have set ourselves the target of generating social value that is worth 20% of our turnover and I am delighted to say that we are on track to meet this commitment.

As you will see from the reports, our contributions to social value are wide and varied, from supporting local education initiatives, to working with small and medium local enterprises, to local hire and community donations. I am not surprised to see us hitting this important target because I believe that generating social value is within our DNA. However, we also now have the right tools to measure our social value contributions, meaning we can use this to work more closely with our many stakeholders to further identify ways in which we can improve our sustainable legacy. At a time when the country is technically in recession, such initiatives become even more important for all local communities within which we work.

Thank you for being a willing recipient of this publication and if you enjoy, which I am sure you will, please feel free to share it with your friends and colleagues, no matter what industry they work in! Stay safe and well over the coming month.

**Gavin Pritchard**  
Managing Director - Highways  
Octavius Infrastructure Limited

## Potential head injury



Brighton Road Clapham Junction



Example of required PPE

### What happened?

On a recent night shift at Clapham Junction station, an Octavius sub-contractor was undertaking a drainage survey when a member of the site team was struck by a glass bottle. The bottle had been thrown by a member of the public from the Brighton Road entrance to the station, which is directly above the platform on which the work group were standing.

Fortunately for the operative concerned, the glass bottle struck their hard hat and smashed harmlessly on the platform. Had they not been wearing this essential item of PPE the consequences may have been more severe.

Members of the work group went to talk to the member of the public who stated they were completely unaware of what was on the other side of the wall when they threw the bottle and was extremely apologetic about their foolish action.

### Impacts

- Fortunately, the IP was wearing their hard hat so they were protected from a potential head injury, resulting in this action having no immediate impact.

### Immediate action

1. The IP was assessed and stated he was unharmed and able to continue with his duties.
2. The member of the public was spoken to and stated that their action was unintentional and had no idea what was on the other side of the wall when they threw the bottle. Whilst this engagement with the member of public had a positive outcome, other instances may not be, so avoid engaging with members of the public. Consider whether calling the police may be more appropriate.

### Octavius staff and our suppliers must confirm that:

All members of staff are wearing the required PPE while undertaking their duties. This incident has highlighted that not all hazards are immediately obvious and due to the IP wearing a hard hat, this has protected them from a potentially serious head injury.

Click on the links below to view the Octavius Standard Operating Procedures and guidance for PPE:

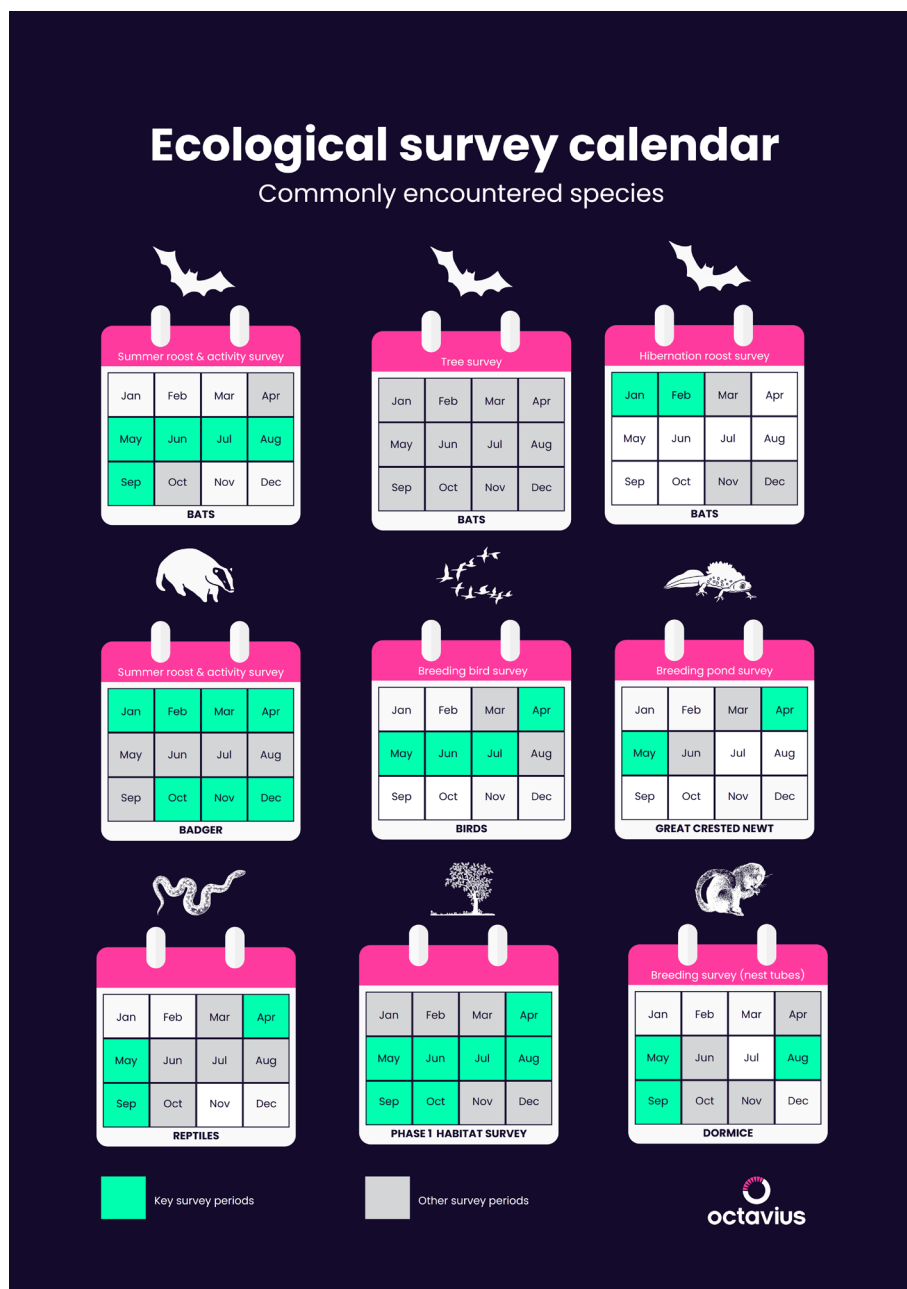
- [Octavius INF-SHE-SOP-9200-5312 PPE \(Personal Protective Equipment\) Standard Operating Procedure](#)
- [Personal Protective Equipment \(PPE\) - INF-SHE-GID-9200-5510](#)
- [PPE \(Personal Protective Equipment\) - INF-SHE-SOP-9200-5501](#)



## Ecological survey calendar

We are committed to protecting and enhancing the environment we work in by avoiding/ minimising disruption to habitats, ensure planting schemes increase connectivity to the wider landscape and achieve biodiversity net gain.

To help plan and carry out environmental surveys we have created an Ecological Calendar showing the key times of the year surveys should be carried out for commonly found species.



For a downloadable copy to display on your site, or if you would like any support contact [Chris Grimes, Head of Environment](#).

## Lean learning sessions

To help you enhance and embed your lean awareness Kimberley Wild has arranged sessions for the next year focusing on different lean tools. All sessions will be held virtually, the sessions are open to everyone including Octavius employees, our suppliers and customers.

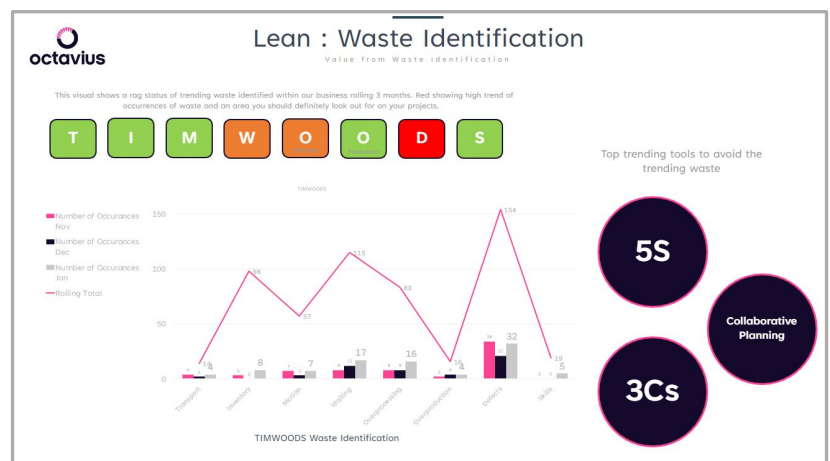
If you would like more information, get in touch with [Kimberley Wild](#).

Date	Time	Teams Link
14/03/2023	12:00-12:30	<a href="#">Voice of Customer</a>
11/04/2023	12:00-12:30	<a href="#">Production Control</a>
09/05/2023	12:00-12:30	<a href="#">5S</a>
13/06/2023	12:00-12:30	<a href="#">Root Cause</a>
11/07/2023	12:00-12:30	<a href="#">Critical to Quality (CTQ)</a>
08/08/2023	12:00-12:30	<a href="#">SIPOC</a>

## Prevent defects waste on your project

Our Lean Waste Identification dashboard has been updated on the [Lean Launch Pad \(sharepoint.com\)](#)

This month Defects waste was leading ahead. Having defects is often due to not explicitly understanding the customer requirements, that could be an internal or external customer. This is also driven by insufficient checks, poor inventory control and lack of skills/knowledge in the supply chain.



Getting it right first time can be achieved by investing up front, with collaborative planning, having open dialogue with the supply chain, capturing any concerns and applying countermeasures.

### Want to know more about how to make efficiencies on your site?

Book your place on the next Lean Awareness training on Tuesday 7<sup>th</sup> March 13:00-15:30 or Wednesday 22<sup>nd</sup> March 9:30-12:30.

All Octavius people can book on the LMS system via SharePoint or contact [Kimberley Wild](#) if you're an external supply chain colleague .

## Rail Wellbeing Wednesday

### Did you know that...

Cardiovascular diseases are the leading cause of death in the UK and are responsible for 1 in every 4 deaths.



February's session focused on heart disease and ways to promote and maintain heart health.

Dr Rajay Narain shared advice on how to keep your heart healthy, risk factors and aftercare.

If you were unable to attend you can watch the session on demand.

[Rail Wellbeing Wednesday – Heart Health](#)

## Sign up to March's session

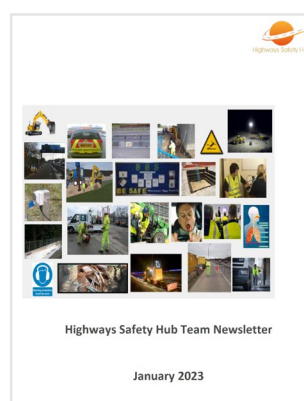
The session will focus on how to “Train your brain for happiness”. The session will help you to better understand how to stimulate and strengthen the neural states of happiness, gratitude, resilience, love and compassion which can lead to a positive state of mind.



## Safer working with National Highways

The January edition of the Highways Safety Hub newsletter is now available. To access the document click the link below or scan the QR code.

[Highways safety newsletter – January 2023](#)



This edition features new scoring systems for gloves, Lithium ION battery safety, car safety checks and health and wellbeing focusing on eating disorders.



**Remember...** The Highways Safety Hub has lots of useful information for working safely on the road network along with all the National Highways Safety Alerts:

[Highways Safety Hub](#)

## Creating a greener environment with Supply Chain Sustainability School



Please join us at our next Designing out Carbon Workshop in collaboration with the Supply Chain Sustainability School, when we'll be discussing how to reduce carbon emissions and how to design them out from the beginning of all projects

Everyone across Octavius and our supply chain is welcome to join.

### Designing Out Carbon Workshop

Wednesday 22<sup>nd</sup> February 2023

9:30 AM - 12:30 PM

[Register here](#)

If you would like any further information about the workshops or Supply Chain School resources, contact [Niko Sapounas](#).

## Free learning resources

Don't forget The Supply Chain Sustainability School has a whole host of learning resources [on their website](#).

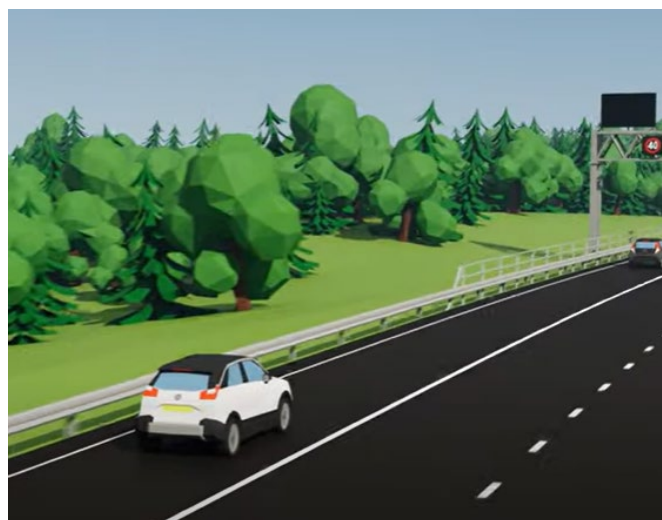
Upcoming sessions include biodiversity, delivering social value, designing out waste, creating an inclusive workplace and much more. Register your free place now!

## Driving safely on a Smart Motorway

Around 10 per cent of the motorway network is now made up of smart motorways. So, it's important to be able to recognise their features and how they work together, some include:

- Following Red X sign
- Traffic signs and signals
- What to do if your vehicle breaks down on a motorway without a hard shoulder?

Check out the short films and resources on the [National Highways website](#) to help you with your journey.



**Remember not following the correct guidance is not only dangerous to yourself and other road users, can be illegal and lead to significant penalties.**



# Failure of Safe System of Work leads to fatality

Siemens PLC has been fined £1.4m after pleading guilty to an offence under the Health and Safety at Work etc. Act 1974, which followed an investigation and prosecution by industry regulator the Office of Rail and Road (ORR).

A technician was killed when a 650kg traction motor he was preparing for removal from an electric locomotive fell on him and caused him fatal crush injuries. It was found that the accident was caused or contributed to by the failure to implement a safe system of work for the task being undertaken.

An investigation by ORR revealed defects in task planning, which included the failure to carry out an appropriate task specific risk assessment and a lack of clear allocation of responsibility for supervision of the task.


## Our STOPThink! Fundamentals help keep everyone safe

These are the 8 key ingredients that we believe are essential for assured and safe delivery across our business. All of the fundamentals must be in place before works commence.

If you believe any of these fundamentals aren't in place before works commence, speak to your site manager or supervisor as soon as possible.


### STOPThink! fundamentals

## Safe system of work (SSoW)




**There is an effective SSoW in place that describes how the activities can be undertaken safely**

- Outlines the hazards involved and provides a step-by-step guide of how to do the job safely. The controls to be put in place are to ensure the safety of anyone involved and/or to reduce environmental impact.
- Are required for all medium and high-risk activities for both Octavius and our Supply Chain.



### STOP Think! Fundamentals



Everyone must have received an effective induction before starting work.

There is effective supervision in place for the activities being completed

Everyone must be physically and mentally fit for work, not fatigued or under the influence of drugs or alcohol

Training and Competence

Everyone must have the appropriate competence to undertake the activities, through training, knowledge, skills and experience

Risk assessment

There is an effective risk assessment in place for the activities, identifying the hazards and setting out measures to remove and control them

Induction

Task briefing

An effective task briefing has been given and is understood by those undertaking the activities

Permit to work

The necessary permits to work are in place where they are required for high-risk activities


**Safe system of work (SSoW)**

There is an effective SSoW in place that describes how the activities can be undertaken safely



Delivered effectively, our fundamentals enable everyone to return home safely each day.

Work MUST NOT commence if these fundamentals are not in place.


**Thinking differently, making better decisions and changing lives.**



For more information, contact the SHEA team  
SHEA@octaviusinfrastructure.co.uk  
24/7 SHEA hotline 01737 944720

For more information, contact the SHEA team  
SHEA@octaviusinfrastructure.co.uk  
24/7 SHEA hotline 01737 944720



## Colleague Awards – celebrating our people



We held our first annual Colleague Awards as Octavius, celebrating our fantastic people and the behaviours that guide us. With 129 nominations, everyone is a deserving champion and we're immensely proud of all of our colleagues, but there could only be one set of winners. Following difficult decisions by the judging panel, 8 individuals and 1 team picked up our 2022 Colleague Awards.

**Congratulations to all the winners and nominees, and thanks to everyone who nominated. It's our people who make Octavius such a great place to work.**



### Our winners



**Bringing People Together**  
Dave Stebbings



**Learn, Grow & Thrive**  
Russell Anderson



**Delighting our Customers**  
Cat Whitehead



**Sustainable Legacy**  
Gade Valley team



**Assured & Safe Delivery**  
Jarrod Parkin



**Safety Champion**  
Amy Marlow



**Exceptional Value**  
Kim Wild



**Paul Marjoram Trainee of the Year**  
Charlie White

**CEO Award** Martin Parsons



## Safety Champion

Amy Marlow



Amy won the award for her work single-handedly administering the fantastic “Wellbeing Wednesday” initiative at our A46 Binley project. Each week she develops posters and an email focusing on key health and wellbeing initiatives, best practice, words from a senior manager on the scheme, and support available to colleagues, supply chain and client personnel across the industry.

Her nomination said “Eight years ago, health and wellbeing champion emails like these were just a pipe dream. Now they are commonplace and it’s all to the good for everyone, especially within the construction sector. Keep up the excellent work because it really is quite brilliant.”



## Exceptional Value

Kim Wild



In her nomination Kim was described as having “a real passion for her job as a Lean Leader for Octavius”. She was praised for her energy and commitment to engaging our people and in such a way that drives uptake throughout the business.

Kim has coached, mentored and trained many people, both within and outside of our business, helping teams identify and remove waste from their work. This has saved our business money and help to improve our reputation with our customers.

## Assured delivery at Aylesbury

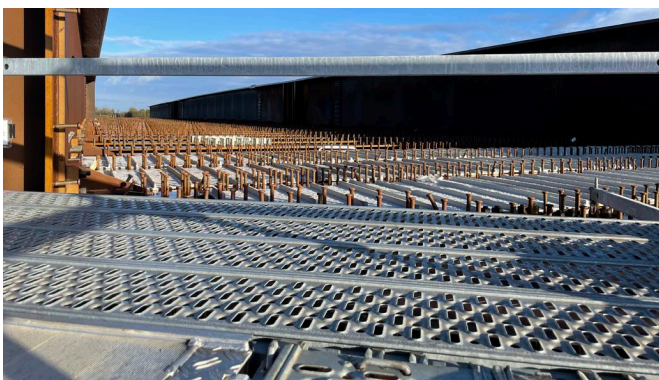


Congratulations to our team working on the EKFB Joint venture to deliver Phase 1 of the HS2 scheme in Aylesbury. This month they have safely completed a large deck slab pour for the structure that will carry the Princess Risborough to Aylesbury railway line, casting in excess of 250m<sup>3</sup> in one go. Completion of the deck pour is a great achievement on our EKFB journey, and a significant milestone for completion of the new three span overbridge. The team have been working tirelessly to complete the logistically challenging task since early last year, working around the clock since November to ensure this important stage of the works was delivered on time and to scope.

This complex project will accommodate trains to travel at 100 mph. The railway existing line will be diverted to run across the new bridge and embankment; allowing the public easier and faster connections to the city.

[Check out this YouTube video](#) showing the project site.

**Congratulations to all involved in the safe, professional, and efficient delivery of the works!**



## Bringing People Together at A46 Binley



Left to right: Kevin Maton, Lord Mayor of Coventry, Heather Timms and Tony Gillias, Rugby Council, Richard Holden, Transport Minister, Nicola Bell and Anita Prashar, National Highways and John Dowsett, Octavius.

This month we celebrated the official opening of A46 Binley Junction, Coventry. During the event a series of classic Jaguar cars crossed the flyover to mark the occasion with guests including Transport Minister, Richard Holden, and Lord Mayor of Coventry, Kevin Maton alongside members of the local community.

The new flyover separates long distance local traffic allowing vehicles to continue their journey without slowing and stopping at the roundabout, saving them time whilst reducing congestion and pollution and making journeys safer.

Our project team began working on the £61m flyover, which is part of National Highways A46 Coventry Junctions upgrade, in 2020.

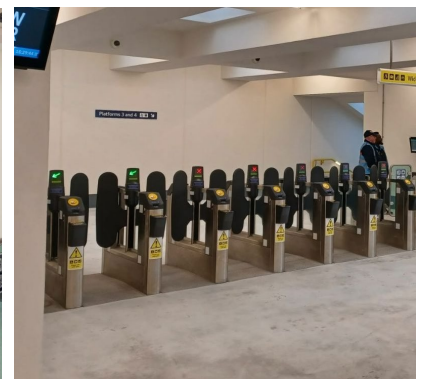
Following the successful delivery of the scheme we're delighted to have been appointed as main contractor at Walsgrave junction, the next phase of the A46 Coventry junctions upgrade programme.

[A46 Binley opening ceremony – National Highways](#)  
[Completion of £61 million flyover – BBC news](#)  
[Binley flyover launch – Coventry Telegraph](#)

**A huge well done to EVERYONE involved in this project.**



## Delighting our customers at Surbiton Station



Huge congratulations to our Surbiton Station site team for successfully opening the new podium, stairs and ticket gatelines for South Western Railway passengers. Despite several challenges including unexpected severe weather conditions, the team have worked hard around the clock to deliver on time and to programme.

Our project team started on site in October 2021 to install a new deck for Surbiton Station's footbridge to reduce overcrowding and improve passenger safety, as part of the £6.7 million congestion relief programme.

Throughout the programme the team utilised several opportunities during industrial strike action working together with our customer, to progress with works. Only due to everyone's commitment to provide a reliable network we were able to secure and plan the works in a short space of time!

**Well done to everyone involved for safely and efficiently delivering the works for our customer. The upgrades are already making a huge impact to the travelling public.**

**Thank you to Network Rail, TJ civils, Oliver Connells civils, TJ Civils, Concept Security, Shay Murtagh.**

## ISO 44001 Collaborative recertification success

Our One Community has successfully retained ISO44001 accreditation, for Collaborative Business relationship Management System following a recent audit.



Andy Dean, Connect Plus CEO, commented "This is indeed a fantastic result. The commitment and effort that goes into our collaboration should never be underestimated, and I offer my thanks to everyone who gives their time and effort towards making it such a success. Achieving this accreditation is the icing on the cake".

One Community is made up of Connect Plus, Connect Plus Services, Jackson, Octavius, Milestone Infrastructure, Tarmac and R&W Civil Engineering.

**Thank you to all involved for helping to achieve this important certification.**

## National Highways Industry Awards shortlist



We're delighted that our A46 Binley Junction project has been shortlisted for Delivering Social Value in the National Highways Industry Awards. **Some of the ways we've helped the local community:**

- Regular donations to Coventry Foodbank, part of the Trussell Trust.
- Helped to protect and improve access to Piles Coppice, an ancient woodland close to the project, by replacing damaged fencing and installing new bollards
- 491 people hours spent supporting the local community
- £1.2 million spend with SME's

**Good luck to the team!**

## Triple gold!



Congratulations to our sites at Surbiton and Tolworth stations and Ashurst substation, who received gold ratings in the Network Rail Southern region Capital Delivery supply chain Route to Gold performance measurement initiative for Period 9.

Well done to all involved!

## STOPThink! goes East

By Mick Reeves, STOPThink! Lead

I was delighted to be let loose in Cambridge where I recently delivered our STOPThink! introduction workshop to members of various local authorities and supply chain partners involved in the Highways Alliance framework (EHA).

I wanted to make the workshop as memorable, engaging and thought provoking as possible and going by the overwhelming positive feedback received so far, I believe this was definitely achieved!



I focused on the who, what, why, where, when and how our award winning STOPThink! Cultural programme underpins everything that we do to keep our people safe and drives improvement across our business, thinking differently and making better decisions that save lives. Sharing Tommy Cooper's 'brick trick' and the 'F's perception experiment, which is a key driver and well known by us; absolutely helped to communicate the psychology behind our the STOPThink! approach. Beliefs driving behaviours, another one our key principles which helps us to understand how our beliefs drives our behaviour received an unanimous acceptance that you cannot separate 'Safety Performance and Business Performance' they just go 'hand in hand'. This reassured me that everyone in the room was as one team!

As a result of the event we have been approached by individuals and organisations alike to deliver STOPThink! workshops across numerous partners within the Alliance.

It is a mandatory requirement for everyone in Octavius to have successfully completed all four STOPThink! modules. If you have not completed any module in the last 12 months, you must complete it during the current year.

To book, go to Your learning, search for STOPThink! sessions, identify suitable dates and register. For more information or to book sessions for your site/project team contact [Mick Reeves](#).





## Giving back

February's Health and Wellbeing focus is Giving Back.

### Why is giving back important?

#### It will make you happier

According to research, Giving Back will definitely make you happier and even healthier. Doing good makes us feel good.

#### It doesn't take much to have a significant impact.

Helping others in even small ways can have great effects on their lives and on society. What you might consider to be a small effort can have a massive impact on others; ripples can become big waves of change.

#### It will keep you grounded

It's easy to forget where we came from or the hardships we might have faced. By helping others, we can stay grounded and appreciate what we have and what we have accomplished.

#### It will make your life richer

Giving back can bring meaning to your life and can enhance it in ways you might not recognise now. It can help you see new things in yourself and identify new capabilities. It helps you grow and become a better person, expanding your identity.

[Take part – volunteer – Government website](#)

[Find your next volunteering role – Do IT](#)

## How you can give back



#### Volunteer

Volunteering for a cause or a charity that you believe in can be significant and a good way to learn new skills or develop existing ones.



#### Offer your services

Think if there is a way of using them for others' benefit. What could you do with your skillset?



#### Donate things

Donating even a small object can be a way of contributing to, and changing someone else's life.



#### Make a donation

Money might be a less direct way of helping, but it is quite essential. Donate to a charity that provides important relief, and aligns with your values.



#### Do random acts of kindness

Pay for coffee, pick up some litter, carry a bag for someone.



#### Commit to a regular contribution

You can have a more significant impact by committing to a regular donation or volunteering service.

## Some of the ways our team are giving back...



Catherine Whitehead, Lead Pre-construction Manager helped give birds shelter during the winter months, as she spent a weekend building and decorating bird boxes in the garden with her children.

[You can buy your own build a bird box kit.](#)



Members of One Team Wessex and Network Rail recently braved the heavy rain to offer their invaluable time to the Horsell Common Preservation Society (HCPS).

Supporting the maintenance of the heath, cleared a large area of Silver Birch and Pine Saplings.

**Everyone at Octavius is entitled to one community day a year to volunteer their time to a good cause. Everyone is encouraged to use their community day to give back.**

Giving back can help you become happier and healthier. It can give your life more meaning and help you grow in unexpected ways. It is a way of being a better person and living your personal values every day.

No matter who you are, helping others will enhance your life and create new opportunities for connection, self-worth, and confidence. People who volunteer or help others feel more in control of their lives. They feel that they are making a difference, and that is something that any of us will appreciate.



## Improvement Opportunities (IO)

### January statistics

During the month of January it's great to see an improving number IO's being raised. There were many good improvement business IO's raised and reporting of preventative measures by site teams.

Please make sure when raising an IO that they highlight opportunities to improve or issues that require escalating.

Our suppliers contributed to over 7% of the overall IO's raised during the month.

Improvement Opportunities are critical to our learning culture and to ensure everyone returns home safely every day.

Please do continue to submit your IO's and thank you for recognising the importance of your continued engagement.

[Raise an IO through the Octavius website.](#)

#### Top IO Originators in January

Gary Johnson	20
David Stevenson	19
Adam Miller	16
Jonathan Blackman	16
Robert Armstrong	13

#### Top categories in January

Access/egress/site security	28
Site welfare	26
Site housekeeping	22
Tools and equipment	17
Road Vehicles	15

#### Top projects in January

E&P NSCD's – Phase 4b	53
Farncombe to Petersfield – Stage 2	31
Ryde Pier Zone 4	27
Leatherhead Embankment	14
Bearing EMI package	12

### Infrastructure Improvement Opportunities

Month	Total no. IOs	Total no. people raising IOs
January 2023	261	55
December 2022	217	55
November 2022	369	75
October 2022	382	80
September 2022	241	59
August 2022	299	81
July 2022	344	71
June 2022	425	80
May 2022	360	72



# SHEA performance summary

January 2023

**Accident Frequency Rate (AFR) Days since the Last RIDDOR Accident: 324**  
 The Current Rolling AFR is: **0.04**

**Service Strike (SSFR) Days since the last Service Strike: 67**  
 The Current Rolling SSFR is: **0.40**

**January  
 Total Number IOs  
 261**

**January  
 No. Safety, Health &  
 Environmental IOs  
 229**

**January  
 No. Business IOs  
 32**

Reference Number	Date	Project	Description
<b>Injury</b>			
11502023-10-01	10/01/2023	Wessex P&R	Operative trapped finger whilst installing metal bracket
11522023-12-01	12/01/2023	Merstham Interchange	Operative slipped over and injured knee
11562023-17-01	13/01/2023	EKFB	Operative slipped over and injured wrist
<b>Other Classification</b>			
11612023-24-01	24/01/23	Wessex P&R	MOP threw a glass bottle from Brighton Road above platform 17 at Clapham, hit operative, no injuries
<b>Property Damage</b>			
11552023-17-01	16/01/23	EKFB	Wheel wash damaged by reversing vehicle
<b>Near Miss/Close Call</b>			
11532023-12-01	11/01/2023	EKFB	A 100T crawler crane was operated without the permit to load for the working platform in place
11542023-12-01	11/01/2023	EKFB	Lifting of reinforcement cage stopped prior to lift as incorrect documentation was in place
<b>TM Incursions</b>			
11582023-18-01	17/01/2023	A66 (M)	Broken down vehicle pulled into works
11622023-24-01	17/01/2023	A46 Binley	Blue light incursion
11592023-18-01	17/01/2023	A66 (M)	Broken down vehicle pulled into works
11602023-23-01	17/01/2023	A66 (M)	Broken down vehicle pulled into works
<b>D&amp;A</b>			
11632023-24-01	17/01/2023	OTW E&P NSCD	Non-negative D&A test following random test

# The Chelmsford Northeast Bypass – Advanced works

## Thrive report To end January 2023



**£312,975.46 total social value added\***



**Enable Inclusive Economic Growth**



£85k Local spend

£41k Spend with local SMEs

£170k Value contributed to the local economy by hiring local people

6 Local hires

**Help people get the best start and age well**



10.5 People hours of learning interventions delivered

We are actively exploring opportunities to support local schools and college

**Help create great places to live and work**



HVO fuel used instead of diesel reducing carbon emissions

28.7 MTCDE reduction in emissions of greenhouse gases

15000 Miles driven by low or no emission staff vehicles

**Transform Essex County Council to achieve more for less**



£700 Community donations

31 People hours spent supporting community initiatives



## The Flitwick Transport Interchange Thrive report

To end January 2023



### £4,735,180.06 total social value added\*



#### Local value

6 Local hires

£521k Local spend

£3.2m Regional & National Spend

£496k Spend with SMEs

£104k Value contributed to the local economy by local hires & job creation

#### Employment, education & skills

381 People hours of learning interventions delivered

1 Work placement

177 People hours spent on education activities with local schools



#### Sustainability

9 People supported with sustainable travel

Electric car charging points & direct electric to eco cabins on site

3722.3 Tonnes waste recycled instead of landfill

9.136 MTCDE reduction in emissions of greenhouse gases



#### Social, wellbeing & community

£6k Community donations

57 People hours spent supporting community initiatives



Octavius Infrastructure Working in Partnership with Central Bedfordshire Council

\*including local economic value, measured using the IES Framework

# The A46 Binley Thrive report

Until January 2023



**£35,119,941.69 total social value added\***



### Local value

- 10 Job creations
- £1.2m Spend with SMEs
- £19m Local spend
- £14m Regional & National spend
- £315k Value contributed to job creations



### Sustainability

- 940 People hours spent protecting & improving the environment
- 3840 Tonnes reduction in construction waste produced
- 99 MTCDE reduction in emissions of greenhouse gases



### Employment, education & skills

- 11 People employed from under-represented groups
- 21 Work placements completed
- 121 People hours spent on education engagement activities



### Social, wellbeing & community

- 491 People hours supporting the community
- £3k Community donations
- £1k Community fundraising
- 9 Mental Health First Aiders



Octavius Infrastructure Working in Partnership  
with National Highways

\*including local economic value, measured using the IES framework

# The Hertfordshire Framework Thrive report

January 2022 to end January 2023



**£1,616,054.39 total social value added\***



## Local value



6 Local hires

£715k Local spend

£711k Regional & National spend

£41k Spend with SMEs

£108k Value contributed to the local economy by local hires & job creation

## Employment, education & skills



240 People hours of learning interventions delivered

1 Person employed from underrepresented groups

62 People hours spent on education activities with local schools

## Sustainability



866 People hours spent protecting and improving the environment

9.8 MTCDE Reduction in emissions of greenhouse gases

140 Tonnes reduction in waste to landfill

## Social, wellbeing & community



£2k Community donations

267 People hours spent supporting community initiatives



Octavius Infrastructure Working in Partnership  
with Hertfordshire County Council

\*including local economic value, measured using the IES framework



# One Team Wessex Thrive report

April 2022 - January 2023



## £52,224,860 total Social Value added\*



### Local value



£17.8m Local spend

£23m Spend with MSMEs

£170k Value contributed to the local economy by local job creation

### Employment, education & skills



136 People hours of learning interventions delivered

49 People weeks of work experience provided

41 People hours spent on education activities with local schools

### Sustainability



152 People hours spent volunteering on protecting and improving the environment

Environmental Surgery held including SmartWaste Training

### Social, wellbeing & community



48 People hours spent volunteering

3 Welly Racks constructed and donated to a local school



Octavius Infrastructure Working in Partnership with Network Rail

\*including local economic value

## The Gade Valley Thrive report

Until January 2023



### £17,253,621.58 total social value added\*



#### Local value

67 Job creations (of which 63 local hires)

£12.8m Local spend

£200k Spend with SMEs

£1.3 Regional & National spend

£2.5m Value contributed to local hires & job creation

#### Employment, education & skills

2143 People hours learning interventions delivered

11 Work placements & 32 Apprenticeship weeks completed

198 People hours spent on education engagement activities



#### Sustainability

255 People hours spent protecting & improving the environment

Solartainer & Hydrogen Tower lights used instead of generator

HVO fuel used instead of diesel reducing carbon emissions by 97%



#### Social, wellbeing & community

417 People hours supporting the community

£82k Community donations  
£29k Community fundraising

3 Mental Health First Aiders and  
£14k Value contributed to improve the workforce physical wellbeing



Octavius Infrastructure Working in Partnership  
with Connect Plus

\*including local economic value, measured using IES framework

The NE & NW Service Delivery  
Framework Thrive report  
to end of January 2023



**£2,038,420.76 total social value added\***



Local value

5 Contracts awarded to local business

£444k Local spend

£1.3m Regional & National spend

£267k Spend with SMEs



Employment, education & skills

440 People hours of learning interventions delivered

We are actively exploring opportunities to support local schools



Sustainability

10.4 Total reduction in emissions of greenhouse gases in MTCDE

Eco cabins on site

240 People hours spent protecting and improving the environment



Social, wellbeing & community

94 People hours supporting the community

£500 Community donations

£1030 Community fundraising



Octavius Infrastructure Working in Partnership  
with National Highways

\*including local economic value, measured using the IES framework



## Infrastructure Projects Southern Toolbox Talk

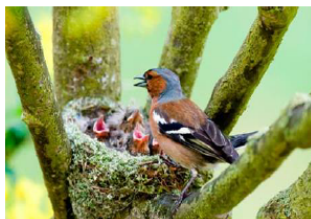
### Nesting birds

03 May 2016

#### Did you know?

**It is illegal to kill or disturb birds or damage their nests or eggs**

- While birds usually nest in trees or hedges they can also be found nesting on the ground, in equipment, amongst materials, in cabins, under eaves or behind drain downpipes
- All birds are protected when nesting and work must be stopped



#### When is bird nesting season?

Most birds tend to build nests and lay their eggs between March and July. The peak months for breeding are May and June. However, some birds can nest all year round.



#### Why does this matter?

- A fine of up to £5000 may be given for each offence, each bird may be deemed a separate offence
- Any vehicle that is involved in the damaging or destruction of birds, their eggs or their nests, may be forfeited

***Bird nesting surveys must be carried out before work commences and any active nests clearly marked with an exclusion zone.***

#### Do

- ✓ Check that no nesting birds or active nests are present before carrying out site clearances of potential nesting sites
- ✓ Stop all construction and work in the immediate area if nesting birds are present
- ✓ Report the presence of nesting birds to a supervisor

#### Do not

- ✗ Kill, injure or capture any wild bird
- ✗ Take, damage, destroy or disturb a nest or eggs of any wild bird
- ✗ Move any machinery, scaffolding or equipment if birds are found nesting

**This and other toolbox talks can be downloaded from:**

[www.southernshield.co.uk](http://www.southernshield.co.uk)

For further information please contact a member of your Environment Team

# Safety Alert !

Make it **safe.**   
 Make it **home.**

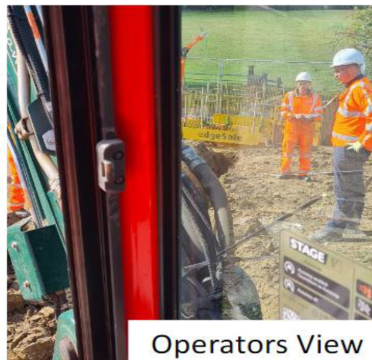
love every drop  
 anglianwater 

For Anglian Water employees, partners and contractors

SA: 000814  
 Date: 25/10/2022



Location of IP



Operators View

## People & Plant Interface Incident

### Struck by Excavator Bucket

#### What happened?

An operator entered a shallow trench to carry out CAT scans. The operator of the 8ton excavator was depositing spoil removed from the trench. They were unaware of their colleague's intention to undertake the CAT scan and as they slewed back towards the trench to continue the excavation the injured person (IP) was struck by the bucket around the shoulder area. The IP was taken to hospital as a precaution but other than bruising no further injuries were sustained but this had the potential to be far more severe.

#### Remember

- Always communicate your intentions to your colleagues prior to entering any of the danger zones around excavators
- Only enter once you have had the 'Thumbs-up' and the excavator is safely grounded and de-energised
- Drivers must be conscious of any blind spots and adjust their body position accordingly
- Always check all vision panels for cleanliness as part of your pre-use checks
- Where provided, utilise driver aids such as all-round camera systems to check for personnel working or entering danger zones
- Consider the impact of deteriorating weather or poor light on your ability to see pedestrians
- RAMS must reflect all activities where intentional entry into danger zones is required such as incremental CAT scans and attachment changes
- Refrain from operating mobile phones when in your excavator
- Ensure you are wearing the correct high visibility clothing when excavating
- Supervisors must discuss people & plant interface during active management
- Be prepared to 'Stop-the-job' if personnel are putting themselves at risk by their actions and behaviours
- Log any near misses involving people plant interface on the [Safe & Well App](#) or your equivalent

**Nothing is so important that we cannot take the time to do it safely**

Safety Alerts should not be thought of as an incident investigation report. They are issued to raise awareness of incidents that occur and to highlight the safe work practices required to avoid them being repeated

# Safety Advice

Action required following a serious incident



## Testing and calibration of Live Line Indicators for use on 25 kV OLE

Issued to: Network Rail line managers, safety professionals and accredited contractors

Ref: NRA23-01

Date: 17/01/2023

Location: National

Contact: [Martin O'Connor](#), Network Technical Head of Contact Systems AC/DC



### Overview

The lifesaving rules 'Always test before applying earths or straps' and 'never assume equipment is isolated – always test before touch' can only be complied with if the Live Line Indicators used are maintained correctly. We have received reports which highlight that Live Line Indicators aren't being tested and calibrated in accordance with the overhead line work instructions (NR/L3/ELP/27237).

All approved capacitive and resistive Live Line Indicators follow the same inspection and verification process with tests being completed both weekly and annually.

Weekly tests - as a minimum each Live Line Indicator must prove correct functionality; this will be verified on known live 25 kV OLE once a week and proof of the test must be documented.

Annual inspection – as well as performing weekly tests on all Live Line Indicators they should also undergo annual calibration inspection. They should be calibrated and tested by an approved accreditor. It is recommended that the calibration is carried out by the manufacturer.

Both the weekly and annual inspections must take place.

A self-check functional test must also be carried out prior to use.

If you come across a Live Line Indicator that is outside of it's calibration date, place the item in quarantine, mark it 'Not for Use', and raise a close call.

### Immediate action required

- All Live Line Indicators must be calibrated and tested in accordance with the overhead line work instructions standard (NR/L3/ELP/27237).
- Only Live Line Indicators with a valid calibration certificate must be available for use.

- When selecting the Live Line Indicator, you must check a successful weekly test has been completed or complete a test on a known live 25 kV conductor prior to use.

**C23**  
One Team

# SHWACE Alert

Safety, Health, Wellbeing, Assurance, Compliance & Environment Alert



**6th January 2023**

**NCA – Mulberry Park**

A sub-contractor arrived at site to collect a tractor and towable tanker.

The tractor and tanker were being loaded and due to their combined length, the front wheels of the tractor needed to be positioned on the raised section at the front of the low loader (the swan neck).

Whilst driving up onto the swan neck the tractor deviated from the low loader and toppled to the ground coming to rest on its right hand side.

## What you must do

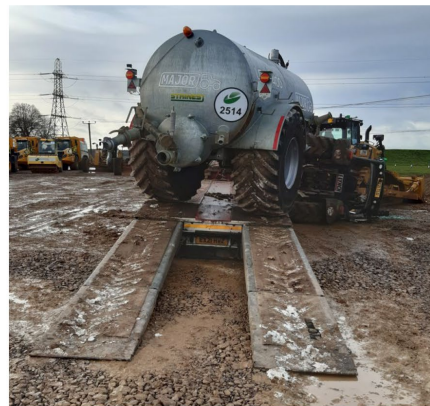
- Plan all plant deliveries and collections from site
- Supervise all plant deliveries and collections from site
- Carry out a PoWRA for the area
- Ensure a restricted area is in place (i.e. barriers/segregation)
- Ensure loading and unloading operations are undertaken by trained and competent personnel in accordance with SSoW

## What we know

- Tractor/trailer was being loaded by the sub-contractor lorry driver
- The tanker was empty awaiting collection
- Ramps (for the access onto the swan neck) were in the stored position at the front of the low loader
- The tanker remained attached to the tractor and remained upright on the low loader trailer bed
- No injuries were sustained

## Actions taken

- All planned plant deliveries/collections cancelled pending outcome of investigation
- Recovery plan is being developed
- D&A tested of the driver was negative
- An investigation has commenced



OFFICIAL

# Shared Learning



## Wessex Lineside Buildings Safe Working Practice

Issued to: **Wessex Works Delivery Principal Contractors**

Ref: NRL22-02

Date of issue: 04/01/2023

Location: Wessex, Southern region

Contact: [Neil Gritton, Safety, Health and Environment Manager, Wessex Route](#)



### Overview

On Wednesday 30<sup>th</sup> November 2022, Weymouth TP Hut roof renewal was highlighted to the Head of E&P illustrating potential unsafe working practices. The delivery team was challenged on the working practices and all sites were stood down pending a Level 1 investigation. The outcome of the investigation determined that the risk, although minimal, was evidently unsafe due to touch potential whilst working on an electrified building. This was categorized as a 'Dangerous Incident'. The Level 1 investigation found that whilst the principal contractor had taken steps to mitigate the onsite hazards, other known methods of mitigation could have further reduced/eliminated the risks associated with working on electrified buildings.

In tandem with the investigation, a workshop was held to define the safe working practices for lineside building renewals. Along with all the associated stakeholders, this shared learning experience and clear method of working was produced for the Wessex lineside building roof renewal scheme.

### Underlying causes

- Briefing not being cascaded down from the buildings team.
- Lack of E&P scheme interface.
- Historic working practices followed but not reviewed.

### Key messages

#### Wet Site

- A wet site is defined as a lineside building showing signs of water ingress.
- All Contractors attending a WET Site **must** be briefed on the Wessex route Wet Site briefing prior to attending site.
- Permanent works can be carried out using non wet site restrictions classified by 'No Known Faults' as per Wessex route Wet Site briefing.

#### Competencies and HV assessments

- Guidance as per NR/L2/ELP/21070 must be followed to highlight the correct level of competence when working on or having access to electrical power supply equipment.
- HV assessments allow the workers to be aware of any HV risks that could cause a problem when working around HV cables. HV assessments are only a factor if scaffolding has a risk of damaging a HV cable/ route, HV switch out/ HV competent person might not be required, but this is subject to the HV assessment report.

#### Scaffolding

- GRP scaffold should be used **if practicable** at all distribution location buildings
- GRP scaffolding around LSB's do not require bonding
- If GRP scaffolding is used there is not a requirement for a LEVEL A, B, C or D - If you need to enter a substation, distribution building or compound you will need a level C on site – Every Level C should understand the Wet-Sites process and be briefed.
- If you need to put a metal scaffold on a metallic LSB it must be bonded. The scaffold design and risk assessment must be shared with the E&P team prior to any works starting.
- For Current metallic scaffolding already in place on a distribution LSB- Guidance is as follows: Removal of currently installed metallic scaffolding - Wearing correct PPE/rubber gauntlets, use of rubber matting and test before touch to strike only. GRP scaffolding is to be reinstalled to carry out any remaining works or the scaffold is to be Bonded.





OFFICIAL

**Raising Faults & Guidelines**

- Anyone can raise a fault with distribution locations.
- Hot Site Flowchart- If a substation is restricted due to the perspective fault current and rise of earth potential, this should be completed before entering site as it could impact the safety documentation. This information is available by contacting the EPME or the HoA team detailed in Hot Site Flowchart.

**References**

Link for Wessex route Wet Site briefing and Hot Site Flowchart

[https://networkrail-my.sharepoint.com/:b/g/personal/mpaynto1\\_networkrail\\_co\\_uk/Eabr8ruDjTBI5M\\_igpwZDsMBLxJjkikX9FaRX2mupDAJog](https://networkrail-my.sharepoint.com/:b/g/personal/mpaynto1_networkrail_co_uk/Eabr8ruDjTBI5M_igpwZDsMBLxJjkikX9FaRX2mupDAJog)

Part of our group of  
Safety Bulletins

Safety  
Alert

Safety  
Bulletin

Safety  
Advice

Shared  
Learning

If you have any feedback or if you would like to contribute to the next issue of STOPThink! please contact:  
[anjni.thakrar@octaviusinfrastructure.co.uk](mailto:anjni.thakrar@octaviusinfrastructure.co.uk)

**24/7 SHEA hotline:**  
**+44 (0)1737 944 720**

Octavius Infrastructure  
Fourth floor, 45 London Road, Reigate RH2 9PY

+44 (0)1737 944 830 [hello@octaviusinfrastructure.co.uk](mailto:hello@octaviusinfrastructure.co.uk)  
[octaviusinfrastructure.co.uk](https://www.octaviusinfrastructure.co.uk)



**STOP.**  
**Think!**

February 2023