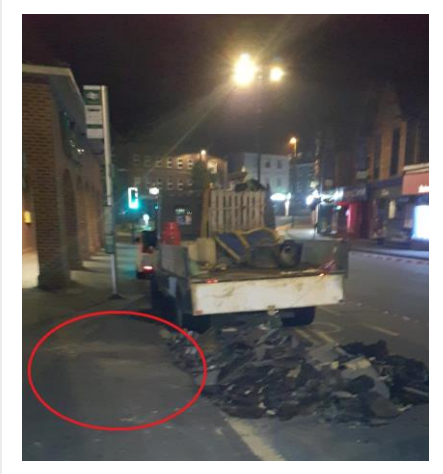


STOPThink! Pedestrian Safety



Area where some of the arising were stored



NRSWA Chapter 8 compliant barriers



What happened?

As part of the Network Rail Sussex planned and reactive framework a sub contractor working for Octavius was undertaking platform resurfacing works at Caterham Station.

During the breaking out of the platform surfacing, the arising were being removed to the front of the station and being stored between the works vehicles for removal. Some of this material had also been left on the footpath.

A member of the public allegedly tripped on the arising causing him to fall onto the footpath. The IP suffered a laceration to his head above his right eye. First aid was administered. An ambulance was called and the IP was assessed by medical professionals and taken to hospital to receive further treatment.

Immediate action

1. First aid was offered and an ambulance was called for the IP.
2. All arising from the excavation were removed from the footpath and the area was cleaned down.

When undertaking similar works of this nature, please remember:

- Risk assessments for works must identify risks to members of the public and contain suitable and sufficient control measures.
- Adequately segregate all tools, plant, materials and waste using robust fencing or barriers.
- If working on the public highways or footpaths, these barriers should comply with chapter eight of the New Roads and Street Works Act (NRSWA) with tapping boards at the bottom to aid the visually impaired.
- Safe walking routes must be maintained. A minimum of 1.2 meters for all members of the public must be maintained and pedestrians should never be forced into a position where they could be harmed.
- Further information is contained in the Octavius Minimum Standards documents for material storage and housekeeping.

Action:

All project and RS Route Managers are to brief this alert to their teams and return the completed TBT acknowledgement sheet to shea@octaviusinfrastructure.co.uk by close of play 07/09/2023