

Please consider the environment, do not print
this document unless you have to.



STOP.
Think!

September 2022

**Make better
decisions.**

[Octaviusinfrastructure.co.uk](https://www.octaviusinfrastructure.co.uk)

Her Majesty
The
Queen
1926 - 2022



Contents

Section	Page No.
Introduction	
John Dowsett	4
STOPThink! Cascade survey	5
Looking after our planet	
Look out for Reptiles and Amphibians this Autumn	6
How to keep your energy bills down with the increase of energy prices	7
Flooding and the economy	9
Learning together	
Lunch and learn: The circular economy	10
Delivering social value through offsite construction	10
Rail Wellbeing Live registration is now open	11
Lean Lunch and Learn sessions	13
Lean Launchpad updated	13
National Highways safety newsletter	14
Safer Highways Live	14
Sharing our successes	
Bincombe team install bird boxes	15
Successful repair works at Boston Manor Viaduct	16
Two electrification upgrade milestones completed on the Wessex route	18
What good looks like	
How A46 Binley achieved better, faster, more data-driven decisions	19
Welfare Hire Eco and Social Value calculator	19
What good feels like	

Section	Page No.
Hertfordshire framework team volunteer to collect litter at Bishop's Stortford	20
A46 Binley Thrive Report	21
Flitwick Transport Interchange Thrive Report	22
The Hertfordshire Framework Thrive Report	23
Gade Valley Thrive Report	24
Looking after yourself and each other	
Five ways to wellbeing – keep learning	25
Looking after your hearing and vision	26
Toolbox Talks	26
Eye protection	28
SHEA statistics	28
Improvement Opportunities – August 2022	29
SHEA performance summary – August 2022	30
External alerts	
Trench collapse	31
Contact of OLE during vegetation removal	32
Robel battery powered tamper incident	33
Improvised explosive device found on track	34
Dumper truck overturned	35
Safe installation of surface laid cables	36
Improvised explosive device found on track	37
UXO discovered	38
Drone incident – Parrot Anafi	39

Introduction

John Dowsett



Welcome to our September 2022 STOPThink! Cascade Briefing.

The last month has certainly been a very historic one for our country following the sad passing of Her Majesty, Queen Elizabeth II and the start of the new reign of King Charles III. My thoughts continue to be with the Royal Family for the loss of their beloved mother, grandmother and great grandmother, at this time of profound sadness and loss. We are ever grateful for the decades of tireless dedication and service that she has given to our nation, and I hope that you all had the opportunity to reflect and commemorate Her Majesty in your own way, on the day of her funeral.

Although this remains a time of sadness, it is also a time to celebrate the incredible life of the Queen and the difference she has made to so many during her 70-year reign, through the consistent application of her values and principles, her dignified leadership, integrity and empathy. For me the splendour and great tradition of the funeral parade meant that the day was as uplifting as it was sombre. The majesty of the proceedings and out-pouring of love from across the world was truly inspiring, demonstrating a togetherness that only a great leader can bring.

A very progressive 12 months!

Whilst it didn't feel appropriate for celebrations, this month has seen us mark the first birthday of our new business, being one year since Sullivan Street Partners completed the acquisition of Osborne Infrastructure Ltd, for us to become a fully standalone entity and in control of our own destiny. I am enormously proud of what we have achieved in just 12 months, successfully completing the many complex steps to set up our new business for an exciting future whilst continuing to safely deliver many amazing projects, bid and win lots of new work.

We have developed and launched a new, ambitious and focussed business plan that aims to double the size of the business in 5 years and made an excellent start in the delivery of some of the key early actions. It has certainly been a year of bringing people together to provide us with an excellent platform to grow our business further.

Our customers, suppliers and our own people have continued to work seamlessly together throughout this year of great change in a truly collaborative way and on behalf of the Board, I would like to say a huge thank you to each and every one of you for your support. I look forward to the coming years and the great things that we will achieve together.

A Sustainable Legacy

Over the first 12 months, I have been particularly proud of the progress that we have made in providing a sustainable legacy. For me, a successful business strategy must have sustainability embedded through its heart. Sustainability is integral to all our key business objectives and decisions, and I am delighted that through positive actions, we have already achieved carbon neutrality for our business, one of the key objectives in our new Business Plan. Over the last three months we have invested in offsetting 1000 tonnes of Carbon Dioxide through supporting alternative cooking fuel projects that help support the UN sustainable goals of reducing poverty, reducing Carbon and promoting equality in Uganda. We have also planted a further 1000 trees in England as part of our commitment to be carbon neutral, to help reduce biodiversity loss and sustain our environment for future generations. We must all take our responsibility seriously as there is so much more that we can all do.

Please Respond to our STOPThink! Cascade Briefing Survey

Finally, if you have not done so already, please take a few minutes to answer our short survey on the content and format of this publication. Please give us your honest opinions so that we can share our cross industry learning far and wide in a way that best suits us all!

Thank you for your continued support. I hope you enjoy this edition of STOPThink! Stay safe and well over the coming month.

A handwritten signature in black ink that reads "John Dowsett".

John Dowsett CEO – Octavius Infrastructure Ltd

Tell us what you think about our STOPThink! cascade

We want to be sure that we're sharing content that's interesting and of value to you; content that will help us all think differently, make better decisions and change lives.

Please take a few moments to complete a short survey to help us understand what you like, and dislike, about the cascade so that we can make sure we share what is relevant and interesting to you.



**Scan the QR code or click the image to
access the survey**

Watch out for reptiles and amphibians on your site this autumn



As we enter the early part of autumn, reptiles and amphibians (often referred to as Herpetofauna) finish the main part of their active life cycle and prepare to become dormant for winter. Species like adders and grass snakes, frogs, toads and newts start going back their traditional hibernation sites.

Grass snakes are the first species to become inactive and are rarely seen after late September. Adders often congregate in their traditional hibernation sites up to late October, with amphibians regularly moving in late autumn rain.

In our industry we have inadvertently created an ideal safe habitat for these species to seek shelter in areas such as adjacent to the CESS on rail sites and on land adjacent to highways and motorways, as they are often well drained and suitable for these species to seek warm shelter during winter.

Works that we undertake often involve breaking or disturbing ground where these species can be found. Although snakes and lizards can quickly move during the active season in summer when it is warm, they become sluggish and struggle to move in winter and can perish very quickly. Therefore, it's important we remain vigilant when disturbing the ground and complete ecological surveys and relevant reporting to determine any license requirements. Generally, species like frogs and newts can move quickly and appear where they were initially absent. Areas they may be found include under piles of rubbish, brash, down old mammal holes, within cable troughing and drains as well as in ballast.

If you or your team come across any type of amphibian you should cease work which may endanger the animal and seek ecological advice to determine the safe and appropriate course of action.

Animals disturbed in winter are at risk of dying and prompt action should be taken. Please let your site manager know and contact your local environment team or Naturally Wild for support and advice.

With thanks to Graeme Skinner MRSB, Managing Director Naturally Wild.



Fighting the fight against rising energy prices

Energy prices have been rising at an unprecedented rate since 2021, causing a significant amount of worry and stress for everyone across the UK. Both households and businesses are looking for ways to manage their soaring utility bills.

Why are energy prices rising?

In April 2022, energy prices spiked due to Ofgem, the energy industry regulator, raising the price cap on household energy bills by 54%. With another significant rise expected in October, it isn't surprising that people are searching for ways to battle rising energy prices.

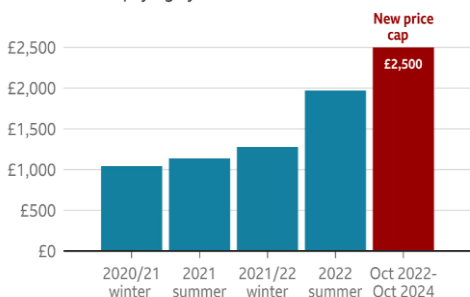


- The UK imports around 50% of its gas from the international market and most homes in England and Wales are heated by mains gas supply
- There are multiple reasons why prices have increased across the globe, including:
- Unusually cold European winters in 2020/21, which have caused a squeeze on global supply
- Hot summers in Asia, particularly in China and Japan, have increased this demand due to the need for air conditioning
- The war in Ukraine has placed limits on Russian exports of gas.

How the government are supporting households and businesses:

Energy price cap will be £2,500 from October

Annual bill for a typical household on a price capped dual-fuel tariff paying by direct debit



Source: Ofgem/UK Government

BBC

However, most households aren't actually typical. Many factors like the number of people in a house, the type of property and how much they use their heating all make a difference.

- A typical household's energy bill will rise to and be capped at £2,500 a year from 1 October (from £1,971)
- The "energy price guarantee" will last for two years
- This is not a limit on how much you will pay - your bill depends on how much energy you actually use
- Before the announcement, typical household bills had been due to rise to £3,549 a year
- The plan applies to all households in England, Scotland and Wales. In Northern Ireland, the "same level of support" will be available
- The one-off £400 fuel bill discount payments for households will go ahead
- Anyone that doesn't use mains gas and electricity - such as those using heating oil - will also receive equivalent help
- Businesses will be protected for six months initially.

Looking after our planet

By Catriona Cliffe, People and Sustainability Director



ENERGY SAVINGS TIPS



Try to use appliances at night for lower tariffs



Make sure your curtains are closed at night



Use alternative methods of cooking

Slow cookers, air fryers, pressure cookers and microwaves are more economical and conventional than ovens.



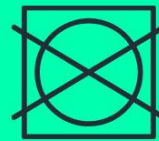
Turn off appliances

Don't keep appliances on standby, when not in use.



Wrap up

Use draught excluders, wear more clothes and use blankets to keep warm.



Avoid using a tumble dryer

Using it twice a week can cost more than £300 a year



Insulate your loft



Reduce time in the shower

Showering for one minute less could save £80 per year.



Turn your radiator down

Keep the thermostat at 20 degrees or below.



Invest in LED bulbs

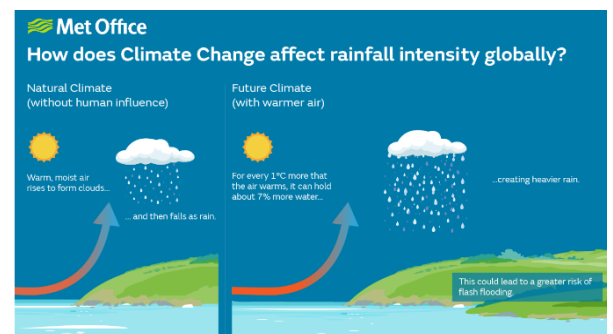
Flooding and climate change

Heavy rainfall has battered the UK causing widespread disruption. The Environment Agency has issued many flood warnings and the wet weather is set to persist.

Is this unpredictable weather normal, or is there a link between flooding events like this and climate change? Here's five things you should know climate change and flooding:

1. A warmer atmosphere holds more moisture

According to the Intergovernmental Panel on Climate Change (IPCC), the atmosphere is about 0.75 degrees warmer than it was at the start of the century, which means it can hold 5-6 per cent more moisture. That doesn't automatically mean more heavy rainfall for the UK due to complex weather patterns, it does mean that the volume of rainfall may increase when it does rain.



2. The cause of specific weather events is hard to determine

In general, scientists are wary of attributing specific extreme events to climate change because it's impossible to say whether an event would have happened if global temperatures weren't increasing. However, there is some evidence to suggest that the rise in global greenhouse gas emissions increased the risk of flood by up to 90 per cent.



3. Evidence that rainfall is getting heavier

Globally, it is hard to distinguish any trend in the intensity or frequency of flooding due to climate change as records in the measurement of rainfall and flooding are variable. But in Europe, where more data on rainfall exists, there's some evidence for a trend towards heavier rainfall. A recent study found that greenhouse gas emissions contributed to observations of more intense precipitation over two thirds of the northern hemisphere between 1950-2000.

4. Scientists predict that heavy rainfall will increase in the future

Surface water flooding occurs where heavy rainfall can't absorb into the ground or drain away. River flooding, closely linked to surface flooding, occurs when streams burst their banks. Coastal flooding results from high tides, storm surges and sea level rise. However, a government study on climate change risks predicts that the UK will experience more intense rainfall and more frequent high river flows in the future, particularly during the winter.

5. Flooding isn't just about rainfall; it's about land use too

Flooding and extreme precipitation go hand in hand, but they aren't the same thing. While climate change may directly alter precipitation in the UK, flooding is a consequence of heavy rainfall which also has a human component. For example, changes in land use, such as building houses on flood plains and paving over natural surfaces, are making people more vulnerable to flooding.

Lunch and learn: the circular economy

In collaboration with our partner, Supply Chain Sustainability School, we will be holding a lunch and learn looking on the circular economy on Monday 3 October.



This session will introduce you to the concept of the circular economy, provide you with an understanding of the key elements and what it means for the built environment. Here are some key things you will learn about:

- The principles of the circular economy
- The drivers for moving towards a circular economy model
- The benefits of adopting circular thinking.

The session will be held virtually, you must [register your attendance](#) to receive the joining instructions.

Everyone including Octavius employees, our suppliers and customers are welcome to join.



Free learning resources

The Supply Chain Sustainability School has a whole host of learning resources on [their website](#). They are all free to join and available for everyone to attend. To access the resources please make sure you sign up first with your Octavius email address.

Delivering social value through offsite construction



Want to know more about how Offsite construction methods and providing social value are both solutions to the big challenges facing the construction industry?

The Supply Chain Sustainability School have launched a new report produced by Akerlof and the University of Salford: 'Delivering Social Value through Offsite Construction' and would like you to join a the discussion on Tuesday 27 September, 13:00-15:30.

The new report explains how the offsite sector can create as much, if not more social value than traditional construction.

You'll have the chance to listen to Bristol Housing Festival, Laing O'Rourke and other report contributors on their experiences creating, measuring and reporting social value through their offsite projects and manufacturing operations. Also, have the opportunity to participate in panel discussions on key challenges such as:

- Understanding impacts of social value away from the site
- Communicating benefits to clients
- Knowing what to measure.

[Register on the Supply Chain Sustainability school website](#)

Rail Wellbeing Live registration is now open



The banner features the Octavius logo at the top left. Below it, a grey box contains the text 'We are proud to be sponsoring'. A white box with orange text reads 'Rail Wellbeing Live'. Below that, a dark grey box with white text says '2 & 3 November 2022'. At the bottom left is the Rail Wellbeing LIVE logo with the tagline 'Inspiring healthy lives across the railway'. On the right side of the banner is a photograph of a smiling man wearing a purple high-visibility vest and yellow headphones, talking on a mobile phone.

Rail Wellbeing Live is back bigger and better than ever on 2 and 3 November 2022, but still free and virtual. There will be over sessions where you can ‘pick and mix’ what you’re interested in and dip in and out when you like.

Key speakers include: Professor Green, Tracey Cox, Simon Weston, Gail Porter, Paul McKenna, Dr Julie Smith and Tim Spector, who will be sharing their experiences on topics such as mental health, relationships, resilience and diet. Plus, there will be over 70 expert speakers offering practical advice on diet, sleep, stress, mental health, fitness, financial worries and so much more.

If you register before 30 September you will be entered into a giveaway with a chance to win £100 Decathlon voucher, Boxing bag and gloves, Fitbit Luxe, one year subscription to Psychologies magazine or RunPods earphones!

[Register for Rail Wellbeing Live](#)

This is the chance for the whole industry to get together online to focus on our health and wellbeing to create a happier, healthier future for everyone.

In the meantime, don't forget to join the Wednesday Wellbeing Sessions that are hosted on the first Wednesday of every month. September's topic was about kindness where David R. Hamilton, a kindness scientist and Dr Sam Akbar, a clinical psychologist and trauma specialist spoke about the effects of kindness, beating stress and building resilience. If you missed the event, you can [catch up on the Wellbeing website](#).

An unhealthy work-life balance not only impacts your mental wellbeing but also your physical health, hence it is really important to understand what we can do to keep work and life separate.

Rail Wellbeing Live

Inspiring healthy lives across the railway

2 & 3 November 2022

DAY 1



**SIMON
ALEXANDER ONG**



**SIMON
WESTON**



**GAIL
PORTER**



**TIM
SPECTOR**



**DR DAVID
HAMILTON**

DAY 2



**DR JULIE
SMITH**



**TRACEY
COX**



**PAUL
MCKENNA**



**PROFESSOR
GREEN**



**DR SAM
AKBAR**

REGISTER NOW



Scan the QR code to register!

THEMES



INSPIRATION

Health and wellbeing talks to inspire your wellbeing journey



LEADING WELLBEING

For managers and leaders who want to set the foundation for a healthy workplace



HEALTHY LIVES

Practical sessions where you can learn how to improve your physical and mental health



GET ACTIVE

With favourites such as yoga, pilates and stretches; plus the opportunity to learn something new!

PRIZE DRAW GIVEAWAY

For those who register before 30 September we're giving away fantastic prizes! Don't miss out on your chance to win:

- £100 Decathlon voucher
- Boxing bag & gloves
- Fitbit Luxe
- One year subscription to Psychologies magazine
- RunPods earphones!

WITH THANKS TO OUR SPONSORS



www.railwellbeinglive.co.uk

Want to know how to be Leaner? Join the next lunch and learn sessions

To help you enhance and embed your Lean awareness Kim Wild has arranged Lunch and Learn session for the next year focusing on different Lean tools. All sessions will be held virtually, the sessions are open to everyone including Octavius employees, our suppliers and customers. If you would like any more information, get in touch with [Kimberly Wild](#).

Date	Time	Tool	Teams Link
11/10/2022	12:30-13:00	20 Keys	20 Keys
8/11/2022	12:00-12:30	3C's	3C's
13/12/2022	12:00-12:30	Step up!	Step Up!
10/01/2023	12:00-12:30	A3 Thinking	A3 Thinking
14/02/2023	12:00-12:30	Waste Goggles	Waste Goggles
14/03/2023	12:00-12:30	Voice of Customer	Voice of Customer
11/04/2023	12:00-12:30	Production Control	Production Control
09/05/2023	12:00-12:30	Sort it out with 5S	5S
13/06/2023	12:00-12:30	Root Cause Analysis	Root Cause
11/07/2023	12:00-12:30	Critical to Quality (CTQ)	CTQ
08/08/2023	12:00-12:30	SIPOC	SIPOC

Prevent delays to your project by leaning on Lean

Our Lean Waste Identification dashboard has been updated on the Lean Launch Pad on Atlas SharePoint and this month WAITING is the top trend! Waiting is one of the eight major types of process wastes, often referred to as the acronym TIMWOODS which is a key part of Lean methodology: transportation, inventory, movement, waiting, overproduction, over-processing, defects and skills.



If you're often waiting or delayed in delivering the same product or service, our Lean Awareness training sessions can help you to review the process, understand the value in the process steps, check it is being followed, and that the right equipment or resources are in place. Book your place in the next Lean session on 15 November 2022. You can book your place on the LMS system via SharePoint or contact [Kimberly Wild](#). The session is open to everyone across our supply chain.

Not identifying or ignoring waste leads to continuously getting things wrong. As a result, productivity and efficiency decrease, increasing production costs. Lean is proven to cut cost and increase production.

Safer working on our National Highways



Please visit the September 2022 edition of Highways Safety Hub Newsletter by clicking the link below or scanning the QR code.

[Highways safety newsletter – September 2022](#)

This edition features a new van driver toolkit to keep van drivers safe on the road, updates to the Highway Code, FM Conway strengthens fleet with innovative health and safety technology, living with Diabetes and much more great information.

Remember... The Highways Safety Hub has lots of useful information for working safely on the road network along with all the National Highways Safety Alerts:

[Highways Safety Hub](#)

The Passport scheme is continuously helping to improve standards for the highways network, increasing safety, reducing costs and improving efficiency. Visit the [Highways Passport Portal](#) for everything you need to know on implementing Passport across your project.

Join us at Safer Highways Live

We're delighted to share that we are proudly sponsoring the VIP lounge at the Safer Highways event on 29 September 2022 at the East Midlands Conference Centre in Nottingham, where we will be showcasing our STOPThink! initiative.



SHE live is the only event of its kind that brings together organisations within the Highways sector showcasing health, safety and wellbeing innovations. Also, focusing on how the industry works together on the common goal of keeping those who work and travel upon our roads safe and well. There will be opportunities to hear from renowned industry leading speakers, innovation trails showcasing best practice, and live demonstrations from thought leaders of products and services which can create a better, safer working environment.

Our award winning STOPThink! programme is something we are extremely proud of as a company and part of our DNA. We launched the programme in 2011 as we wanted to build a culture where safety and awareness is ingrained in everyone's mind to make sure a safe choice is made on every occasion. It has enabled our teams, suppliers and customers to think differently, make better decisions and changed lives.

We look forward to seeing you on the day and sharing more about how we have achieved an all time low safety record through our programme.

[Safer Highways Live website.](#)

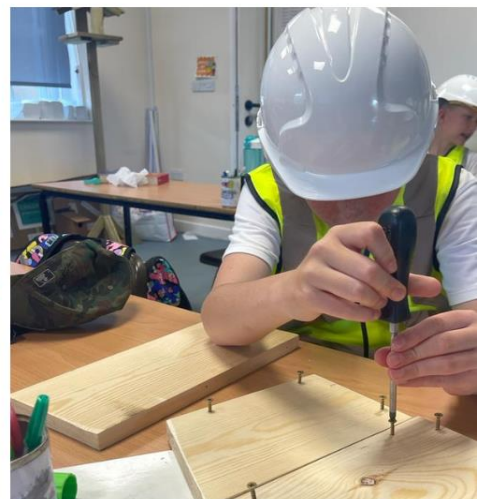
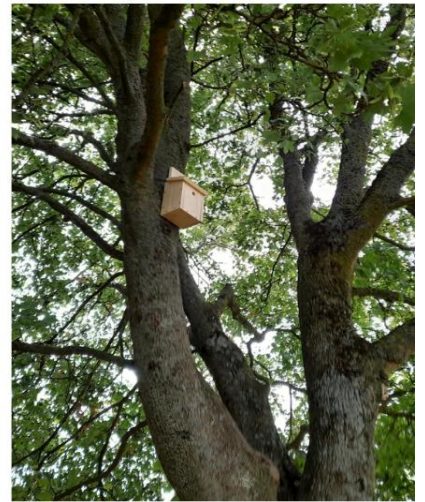
Bincombe team returns to local school to install bird boxes

Our Bincombe team are continuing to create a sustainable legacy and this time they returned to Hullavington Primary School in Wiltshire, to install bird boxes that were created by a year 6 class earlier this year.

Our project manager Karl Novis and site manager William Mc Carthy collaborated with the Head Teacher to install the bird boxes over a weekend within the school grounds. The wonderfully decorated boxes will provide a safer environment for birds and help to protect them especially during the winter months.

The school are delighted with the end result they said “ Thank you to all involved in this project, especially Maria, Karl and Will. What a wonderful legacy the Year 6's have left us.”

Thank you to everyone involved for protecting our planet and bringing people together.



Connecting people over Boston Manor Viaduct



Congratulations to our M25 Highways team for successfully completing the challenging structural upgrade and repair works to Boston Manor Viaduct. The viaduct provides essential connection through Central London and Heathrow and is one of the main strategic structures on the M25 Network.

Boston Manor Viaduct was opened to the public in 1965, the structure is just over 1km long and the flyover crosses over and in front of a number of key sites such as Boston Manor Park, several local businesses and the University of West London.

Our Octavius team joined the project in July 2021 carrying out essential repairs and upgrades including replacing walkway and parapet panels, installing CCTV cabling and commissioning CCTV cameras, repairing and painting beams, girders and walkway frames and completing delamination surveys. To overcome some challenges in the location including rope access and difficult to access areas, our team collaborated with a variety of specialist contractors and National Sector Scheme accredited operatives for the painting works to provide efficiencies to the programme and ensuring works can be completed safely.

In total 166 walkway panels and 26 panels have been replaced providing a safe and reliable walkway for people carrying out works and inspections.

Our team went above and beyond to delight our customers as they took advantage of the dry and sunny weather in April this year, by starting the repair and paint works in 152 locations across the structure's beams, girders and frames earlier than planned. This prevented the risk of wet weather, ultimately extending the life of the viaduct. Also, outside of the scope of the works the team identified a number of additional paint repairs to our customer, Connect Plus Services to support future works, saving cost and time.

Sharing our successes

To minimise disruption to local residents, strategic changes were made to the schedule of works, the noisiest activities were completed within daytime hours. If works in specific locations had to be carried out at night, operatives stopped at 11pm and readings were regularly taken to ensure noise levels were within required emission limits.

Additionally, although the paint repair works did not produce noise emissions higher than the allowable legal limit, the project team applied for a Section 61 permit with the local council regardless, to ensure local residents, stakeholders and the council were regularly updated on the ongoing works.

The team have been praised by local businesses for being mindful and their excellent care and support whilst on site, particularly from owners of a nearby car park as the team additionally replaced faulty drainage that was leaking directly onto parked cars.

Well done to the whole team for going above and beyond to delight our customers and looking after the local community. Through building great relationships, you have allowed the safe and efficient delivery of this essential maintenance work whilst minimising disruption.

With particular thanks to Ealing, Hounslow and Hillingdon Councils, Transport for London, Heathrow Airport, National Highways, University of West London, Millie Carpark, Enterprise, Howe Co Solicitors and Blakedown.

BEFORE



Walkway and parapet panel replacement works



AFTER

Providing a reliable network on the Wessex route

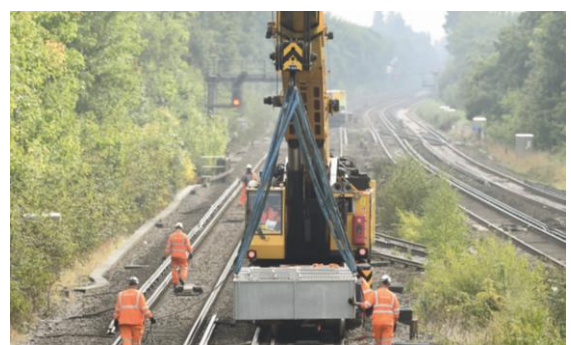
Two electrification upgrade milestones successfully completed



Over an abnormal weekend possession our One Team Wessex - E&P Transformer Rectifier Units (TRUs) and non-traction switchgear renewals team successfully achieved two programme milestones. We entered into service our first TRU site at Sturt Lane substation (lifted into place in June this year), at Farnborough North and the team successfully lifted a TRU module, transformer and transformer bund into position at Winchfield substation via a KIROW rail mounted crane. It's just one of many life expired TRUs on the Network Rail Wessex route that are being replaced with new infrastructure to convert AC in to DC current, supplying high voltage power onto the railway. These renewals will improve service reliability, minimise delays and enhance experience for the travelling public on the Wessex route.

Our team spent over 12 months of collaboratively planning with Network Rail and our trusted supply chain to enable them to successfully complete all the works on time, safely without accident or incident and with minimal disruption to the travelling public and the local residents. Well done all involved.

We would like to pass on our thanks to the Network Rail team, our Octavius delivery team and our trusted suppliers who all contributed to the successful weekend. Particularly: Network Rail team - Mark Harris, Molly Day, Dol Gurung, Tom Hyland. Octavius team: Paul Welch, Liam Green, Gary James, Jamie Hedgcock, Will Allen, Robbie Shields, Ross George. Our suppliers: Sonic Rail, RJ Power, Volker Rail, S&T Cover, Southern Cranes, Hallet & Sibermann and Siemens.



What good looks like

How A46 Binley achieved better, faster, more data-driven decisions

Carrying out construction works on a critical junction with high traffic is a challenging task, to prevent disruption to the travelling public and putting our workers at risk on a live highway our A46 Binley team partnered with Sensat to remotely access and monitor an ever changing site.

The team have collaborated with Sensat for 18 months to create a state-of-the-art 2D and 3D digital twin of the site.



This innovative technology provided the project team an accurate visualisation of the site, fast and updated data to monitor progress throughout the construction stage; which meant any potential risks can be identified quicker allowing better data driven decisions.

The team also saved over 7.4 tonnes of CO2 as the technology reduced the need for people to travel to site and rely on the digital twin instead.

Well done to the whole team for developing this great greener solution. Through building great relationships and thinking differently you have delighted our customers by minimising disruption.

How much carbon and cost savings does your project deliver?

We are always actively embracing carbon neutrality and social value but capturing this can be challenging. Welfare Hire's Eco and Social Value calculator, can calculate CO2 emissions, fuel, noise, servicing, and cost savings in three easy steps.

The calculator will ask you what welfare hire unit you are using on site and will provide you with cost savings per week of hiring the unit.

If you are hiring equipment from Welfare Hire, please get in touch with our Social Value team: [Chris Bates](#) for railway projects and [Sarah Askey](#) for highway projects to help us capture our social value benefits and savings across all our projects.

Thank you River Colne Project for helping us to be carbon neutral

Our River Colne Project team hired the Eco10 XLi unit for 15 weeks, in total providing £562,538.00 of social value including 2,268.30 CO2 emissions savings.

[Calculate your social value benefits on the Eco and Social Value calculator](#)



Hertfordshire team get binning at Bishop's Stortford

Volunteering to keep the environment clean by collecting litter at local park



Following on from the success of the litter pick day earlier this year at River Colne, members of the Hertfordshire Framework team spent a morning collecting litter at Bat Willow Hurst Park and within the surrounding area in Bishop's Stortford .

Thanks to the hard work of the team, they managed to fill five bags of litter left in the park; helping to preserve the area for local species and natural habitats and allowing the local community to enjoy the green space ensuring pedestrian paths and cycle paths are safe and tidy.


Enormous thanks to Nicola Weymouth, Billy Knightwood, Marcus Daniel and Sarah Askey. The help of volunteers like yourselves is essential to preserving the environment.

We are committed to supporting the development of all our people along with the sustainability and success of the communities in which we work in. Each year all our people can take a day to carry out worthwhile work within the community that also allows them to develop a new skill or knowledge.

If you would like to complete a Community Day speak with your Line Manager and complete the application form.

The A46 Binley Thrive report

to end of August 2022



£343,989.99 total social value added*



Local value

-
- 9 Job Creations
- 2 Contract awarded to local business
- £315,348 Value contributed to job creations



Employment, education & skills

-
- 11 People employed from under-represented groups
- 21 Work placements completed
- 160 People hours spent on education engagement activities



Sustainability

-
- 840 People hours spent protecting & improving the environment
- 3340 Tonnes reduction in construction waste produced



Social, wellbeing & community

-
- 423 People hours supporting the community
- £572.00 Community donations
- £1,332.00 Community fundraising
- 9 Mental Health First Aiders



The Flitwick Transport Interchange Thrive report

To end August 2022



£775,534.14 total social value added*

Local value



6 Local hires

£292,642.00 Local spend

£104,281.00 Value contributed to the local economy by local hires & job creation

Employment, education & skills



315 People hours of learning interventions delivered

1 Work placement

177 People hours spent on education activities with local schools

Sustainability



9 People supported with sustainable travel

Electric car charging points & direct electric to eco cabins on site

3715 Tonnes waste recycled instead of landfill

Social, wellbeing & community



£5,926.00 Community donations

57 People hours spent supporting community initiatives



Key Members of the Flitwick Project Delivery Team,
Will Stubbs – Assistant Site Engineer,
Rob Solway – Works Manager and
Elliott Dye – Site Manager



Octavius Infrastructure Working in Partnership with Central Bedfordshire Council

*including local economic value

The Hertfordshire Framework Thrive report

Jan 2022 to end August 2022



£1,832,649.41 total social value added*



Local value

6 Local hires

£212,440.00 Local spend

£108,574.00 Value contributed to the local economy by local hires & job creation



Employment, education & skills

186.5 People hours of learning interventions delivered

1 Person employed from underrepresented groups

57 People hours spent on education activities with local schools



Sustainability

866 People hours spent protecting and improving the environment

8,401.52 MTCDE Reduction in emissions of greenhouse gases

140 Tonnes reduction in waste to landfill



Social, wellbeing & community

£1,793.00 Community donations

186 People hours spent supporting community initiatives



Hertfordshire County Council

Octavius Infrastructure Working in Partnership
with Hertfordshire County Council

*including local economic value

The Gade Valley Thrive report

to end of August 2022



£14,338,339.75 total social value added*



Local value

67 Job Creations (of which 63 Local Hires)

£11,551,767.00 Local spend

£2,568,997.00 Value contributed to local hires & job creation



Employment, education & skills

2075 People hours learning interventions delivered

11 Work placements & 32 Apprenticeship weeks completed

198 People hours spent on education engagement activities



Sustainability

255 People hours spent protecting & improving the environment

Solartainer & Hydrogen Tower lights used instead of generator

HVO fuel used instead of diesel reducing carbon emissions by 97%



Social, wellbeing & community

411 People hours supporting the community

£80k Community donations

£29,640.00 Community fundraising

3 Mental Health First Aiders and £14,919.00 Value contributed to improve the workforce physical wellbeing



Octavius Infrastructure Working in Partnership with Connect Plus

*including local economic value

Five Ways to Wellbeing – keep learning



Learning new things can not only be enjoyable it can boost our self-confidence, self esteem and help us to find a meaning and purpose in life. It is a great way to keep your brain active, stay healthy and help us to lead a longer and active life. The practice of setting goals, which is related to adult learning, has been strongly associated with higher levels of wellbeing.



Why not try:

- Try something new or rediscover an old hobby that challenges you, whether it's making model aeroplanes, writing stories, sewing or knitting
- Sign up for a class or course that you're interested in
- Take on a different responsibility or task at work
- Learn to play an instrument
- Learn to cook your favourite food or a new dish
- Set yourself a challenge
- Learn a new word or language
- Read the news or a book
- Set some goals
- Research something you've always wondered about
- Visit a gallery or museum and learn about a person or period in history that interests you
- Do a crossword or Sudoku
- Challenge yourself to complete a DIY project, this can be fixing a broken bike or upcycling old furniture. There are lots of free video tutorials online to support you.



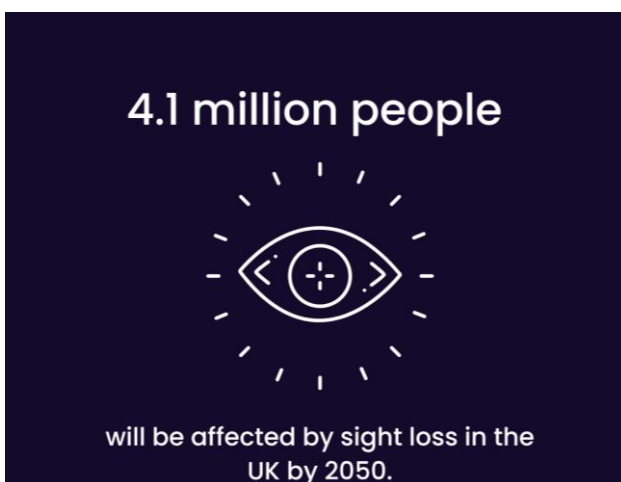
We are committed to learning and growing our people and have a wider range of training opportunities available on our learning Launch Pad. You can access this via Atlas SharePoint or speak to your line manager to add development opportunities to your PDP or the [Learning team](#) who can help advise on opportunities available.

Looking after your vision and hearing

Our campaign for September aims to raise awareness and understanding of how to protect your hearing and eyesight.

[Looking after your vision and hearing – NHS website](#)

The statistics



As we get older your vision may change in the following ways;

- Blurred vision
- Reduced visual field
- Trouble judging distances
- Taking longer to adjust to changes in lighting levels.



This year's National Eye Health Week is set to take place from the 21-25 September and aims to inspire and educate people on the importance of eye health and of regular sight tests.

- A sight test can detect early signs of conditions like glaucoma, which can be treated if found soon enough
- During a sight test, other health conditions such as diabetes and high blood pressure can be detected.

Sight is the sense people fear losing the most, yet many of us don't know how to look after our eyes – National Eye Health Week aims to change all that!

You can look after the health of your eyes, and help to prevent eye conditions from occurring, by:

- Not smoking or quite smoking
- [Keep active](#)
- Eating a balanced diet
- Wear sunglasses to protect your eyes from the sun
- Have regular eye checks
- Always make sure you wear correct safety glasses when carrying out work
- Take screen breaks every 20 minutes and look at something 20 feet away for 20 seconds.

For more information visit the Vision Matters website;

[Your Vision Matters](#)

Hearing

Problems with hearing can affect the balance centre in your inner ear, and your awareness of hazards in your environment, making tripping and falling more likely.

If you've noticed a change in your hearing, speak to your GP as soon as possible. If you suffer from hearing loss, hearing aids are available free on the NHS and can help restore some, if not all, of your hearing.

Common signs include:

- Difficulty hearing other people clearly and misunderstanding what they say, especially in noisy places
- Asking people to repeat themselves
- Listening to music or watching TV with the volume higher than other people need
- Difficulty hearing on the phone
- Finding it hard to keep up with a conversation
- Feeling tired or stressed from having to concentrate while listening

How you can look after your hearing;

- Always wear ear protection when carrying out noisy construction works
- Attend regular hearing checks, to detect any damage to your hearing as soon as possible



- Report any problems with noise-control devices or your hearing protection straight away.
- Turn the volume down on devices, headphones and earbuds. The World Health organisations recommends to listen with headphones at no more than 60% volume for no more than 60 minutes a day
- **Give your ears time to recover** – when exposed to loud noises for a prolonged period of time, your ears need time to recover. Regularly take breaks in a quiet space for five minutes.

You can find out more about how to best protect your vision and hearing by visiting;

[Looking after your Vision and Hearing](#)

[HSE - Noise at work](#)

Good workplace communication tips



Always ask: even if someone's using a hearing aid, ask if they need to lipread you.



Make sure you have the person's attention before you start speaking.



Turn your face towards the person you're speaking to, so they can see your lip movements.



Speak clearly, not too slowly, and use normal lip movements, facial expressions and gestures.



Get to the point: use plain language and don't waffle.



Don't cover your mouth when speaking.



Make sure what you're saying is being understood.



If someone doesn't understand what you've said, try saying it in a different way.



Keep your voice down: it's uncomfortable for a hearing aid user if you shout, and it looks aggressive.



For longer chats, find a place to talk with good lighting, away from noise and distractions.



If you're talking to one person with hearing loss and one without, focus on both people.

Eye protection



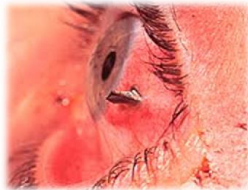
Infrastructure Projects Southern Toolbox Talk

The Southern Shield Charter – Eye Protection



1. What does the Charter say about eye protection?

Appropriate eye protection must be worn whilst working on the Southern Region Infrastructure.



Thousands of people are injured each year from work-related eye injuries that could have been prevented with the proper selection and use of eye protection. Southern Shield requires the provision and use of appropriate eye protection at all times.

2. Discuss the reasons why it is important to wear adequate eye protection

- Imagine your life without sight. We need two eyes to properly view the world. With only one eye we lose depth perception – we cannot judge where something actually is.
- The eye is extremely sensitive to many hazards including; bright light, mists, fumes, smoke, infectious agents, chemicals, moving particles such as splinters and metal or glass shards and larger objects such as Re-Bar and needs to be protected.
- While general eye protection can offer some limited protection specific protection must always be considered for each task
- Make sure you have the right eye protection for the job you are doing – think about your eye protection if others in the vicinity to you are wearing something different.



Why wouldn't you protect your eyes?

What is Southern Shield?

- Southern Shield was set up as a collaborative forum to improve the way that IP Southern (Network Rail) and its supply chain address safety issues.

- As part of Southern Shield, the Safety Leadership Team was established to change the attitudes and behaviours that are preventing us from having a safety culture that does not tolerate worker injury.

- A Steering Group was also established to agree and take forward safety initiatives through a number of Working Groups.

- Agreed safety initiatives are added to the 'Charter' and these must be implemented on all Southern Region sites.



Improvement Opportunities (IO)

August statistics

During the month of August engagement of business and project IO's has slightly reduced in comparison to last month.

However, there were many good project IO's raised which were more proactive in identifying and resolving issues. Our suppliers contributed to over 7 % of overall IO's raised during the month.

Improvement Opportunities are critical to our learning culture and to ensure everyone returns home safely every day.

Please do continue to submit your IO's and thank you for recognising the importance of your continued engagement.

How to raise an IO

You can raise your IO's using our new system through the Octavius website.

[Submit an IO on the Octavius website](#)

Top IO Originators in August

Jonathan Blackman	23
Sean Broughan	13
Adam Millar	12
Henry Barkas	12
Billy Knightwood	10

Top categories in August

Site housekeeping	32
Access/egress/site security	24
Road space/traffic management	22
Process and documentation	20
Site welfare	19

Top projects in August

Lifecycles 2 Connect Plus framework	23
Farncombe to Petersfield GRIP 5	22
A46 Binley construction	18
OTW Geotech GRIP 3-5	17
OTW rewire and relight works	15

Infrastructure Improvement Opportunities

Month	Total no. IOs	Total no. people raising IOs
August	299	81
July	344	71
June 2022	425	80
May 2022	360	72
April 2022	251	61
How many did your site submit last month?	?	?



SHEA performance summary

August 2022

Improvement Opportunities Frequency Rate (IOFR) the Current Rolling IOFR is: N/A
(Target of 2.5 per 1000 hours worked)

Accident Frequency Rate (AFR) Days since the Last RIDDOR Accident: **172**
The Current Rolling AFR is: **0.08** against a threshold of 0.01

Service Strike (SSFR) Days since the last Service Strike: **8**
The Current Rolling SSFR is: **0.25**

**August
Total Number IOs
299**

**August
No. Safety, Health &
Environmental IOs
246**

**August
No. Business IOs
53**

Reference Number	Date	Project	Description
TM incursion			
10652022-02-08	01/08/22	CP Network Gantry Painting	Vehicle entered through cones to avoid internal gates to access slip road, no works at the time.
10662022-12-08	12/08/22	CP Concrete Investigations	A motorcycle pushed TM and travelled through site at speed
10682022-15-08	15/08/22	A46 Binley	Four vehicles entered closure through access during planning operation but exited before details could be obtained.
10712022-30-08	15/08/22	CP Concrete Investigations	Motorcycle came through works at slow speed, was allowed out by gate person
10732022-30-08	23/08/22	CP Concrete Investigations	Another contractor's vehicle accessed the closure to access the M11.
10702022-30-08	27/08/22	A46 Binley	MOP vehicle followed an OIL site engineer in through the e/b on slip. Vehicle was stopped and helped back out of works.
Environment			
10502022-27-06	27/08/22	A46 Binley	Diesel spill following fuel theft.
Drugs and Alcohol			
10672022-15-08	15/08/22	M1 ERA Woodall	D&A non-negative result at induction.

Safety Bulletin



Trench collapse

Issued to: **All Network Rail line managers, safety professionals and accredited contractors**

Ref: NRB22-07

Date of issue: 22/08/2022

Location: Eastbourne, Sussex route, Southern region

Contact: Rosemarie De Val, Health & Safety Manager, Southern Capital Delivery



Overview

On 12 August 2022 trench excavation works were being undertaken within the highway to a depth of 1.60m. The excavation required a temporary works design and a proprietary system was being used for areas where operatives needed to access the trench.

The temporary works were to be used at locations where operatives needed to enter the trench to join the new ducting being installed. Two teams of five members of staff were employed to undertake the task of excavation, shoring, placing of ducting and backfilling of trench.

Trench support was installed by a minimum of two people from the top of the trench and then a ladder placed within for access. Areas between the shoring was left open and no people were required to enter this space.

Two people were left in the working area to install trench support. They entered the trench within the shoring that had been installed.

Rather than come out of the trench to install the next set of temporary trench shoring, one person walked along the unsupported trench to the required location to install the trench support in an unplanned manner from within the trench. Clay from the side of the trench came loose and struck the operative on the right hip causing bruising.

Discussion Points

- Why would the operatives decide to undertake the trench shoring activity in a manner that was not briefed and not safe?
- If more staff were needed to undertake the task why did they not stop works, inform the supervisor or state the 'worksafe procedure'?
- Why did the staff assess the open excavation as safe when their task was to install trench shoring to stop collapse – we all have a different perception of risk.
- Consider what impact the hot weather may have, it is known to be a factor with the clay side wall drying out when excavations are left for some time.

Safety Advice

Action required following a serious incident



Contact with OLE during vegetation removal (revised)

Issued to: **All Network Rail line managers, safety professionals and accredited contractors**

Ref: NRA22-06

Date of issue: 13/09/2022

Location: Ipswich Delivery Unit

Contact: Martin O'Connor, Network Technical Head Contact Systems AC/DC, Technical Authority



Overview

On the 1st June 2022, a team consisting of Off-Track and OLE staff from Ipswich Delivery Unit attended site at Arlesford to clear vegetation that was overhanging the Return Conductor. The team had a Safe Work Pack (SWP) to cover the work and upon inspection by the OLE team, it was determined that an 'OLE switch off' (not an earthed isolation) would be required, because the vegetation was in close proximity to LIVE OLE.

An 'OLE switch off' was taken by the Nominated Person and the Off-Track team proceeded to clear the overhanging branches. Whilst works were proceeding one of the branches fell onto the OLE which resulted in two of the Off-Track team receiving an electric shock.

It was then identified that the incorrect electrical section for the 'OLE switch off' had been requested, therefore the OLE in the area of works was LIVE. Approved insulated tools were not being used. The two employees attended A&E as a precaution and both did not sustained any injuries.

Immediate action required

- If the trimming or felling of trees is required near to the OLE, it shall be carried out in such a manner that it is not possible for debris to fall or be projected within 2.75m of live OLE or live pantographs and other roof mounted electrical equipment on trains.
- Before commencing any vegetation work the proposed works shall be subject to an electrical risk assessment.
- Lines should be isolated and earthed under an Overhead Line Permit (Form C) prior to work commencing where there is a risk of debris from vegetation clearance falling within 2.75m of live OLE (including Return Conductors).
- The E&PME must authorise an electrical risk assessment for vegetation removal that is less than 2.75m but more than 600mm from live equipment. Specific mitigations should be in place for such work which may include the use of OLE trained staff and insulated tools.
- An OLE switch off alone does not constitute an isolation and the OLE shall be treated as live. A switch off of the OLE shall only be permitted when identified as a control measure in a documented risk assessment or in the relevant TRCS.
- The vegetation clearance activity is detailed in the Task Risk Control Sheets (TRCS) NR/L3/MTC/RCSO216/OLE09 and GA21.
- Lineside vegetation shall be managed and controlled in accordance with NR/L2/OTK/5201.
- Any vegetation work shall be preceded by environmental checks in accordance with NR/L2/ENV/122
- If you do not feel that you have a safe system of work in place, you should use the Worksafe procedure.

Safety Bulletin



everyone
home safe
every day

Robel Battery Powered Tamper Incident

Issued to: **Network Rail line managers, safety professionals and accredited contractors**

Ref: NRB22-08

Date of issue: 23/08/2022

Location: Eastleigh Depot, Wessex, Southern region

Contact: [Keith Penn, Rail Plant Support Engineer, Wessex, Southern Region](#)



Overview

The Eastleigh P-way team arrived at the stores on the 31/07/2022 at 23:54 to collect tools and equipment for their planned works. A Robel Lithium-Ion battery was removed from the charger and placed on a Robel 62.20 vertical tamper. The test button was pushed, and a loud bang and a puff of smoke was emitted from the Robel vertical tamper unit. This was reported to Control and the section manager.

The section manager instructed the team to place the equipment in quarantine. The following morning at 09:25 hrs the section manager and supervisor went to the stores to investigate further. During the initial investigation the battery was unclipped from the vertical tamper and placed on the floor to inspect further. After approximately 2 minutes they heard a hissing noise coming from the battery, followed by smoke, which began filling the stores. The stores were evacuated, and the fire brigade were called, who extinguished the fire with no other damage.

The Robel 62.20 vertical tamper unit and Robel Lithium-Ion battery were both new and delivered to the team on the 20/07/2022 and had only been used once before. There is no indication that other Robel vertical tamper units and Robel Lithium-Ion batteries have the same problem and at present there have been no other incidents reported

This equipment is fully product accepted
Ref:PA05/05265 & Catalogue number 094/022069

This incident is currently under investigation by the manufacturer and Network Rail Technical Authority Plant Team have notified the Regions that a suspension of the use of these assets is to be instigated until the results of this investigation are completed and the assets are confirmed as 'safe to use'.

Discussion Points

- Are the correct pre-use checks being carried out as per the manufacturer's instructions and are all defects reported after use?
- Is this equipment operated and maintained by trained and competent staff in accordance with the manufacturer's instructions and Network Rail policy?
- Do you know the quarantine procedure and is this being followed?
- Are lithium-ion batteries being charged safely and in the correct manner as per the manufacturer's user instructions?
- Are the correct emergency procedures in place for all buildings storing equipment?

Safety Advice



everyone
home safe
every day

Improvised Explosive Device found on track

Issued to: **All Network Rail line managers, safety professionals and accredited contractors**

Ref: NRA22-07

Date of issue: 15/09/2022

Contact: Ian Davies, Health and Safety Manager, NW&C



Overview

During a site walkout in Newton Le Willows, an Improvised Explosive Device (IED or homemade bomb) was seen in the 4 foot by the site team. Whilst moving to a point of safety, another similar IED was found in the 6 foot.

Staff evacuated the immediate area and made an emergency call.

The Rail Incident Officer (RIO), British Transport Police (BTP) and Army Bomb Squad attended to assess the devices and they were deemed unviable, in that they would not denotate and were no danger to staff, surrounding homes or the rail infrastructure.

The Army Bomb disposal team removed the devices and confirmed the materials inside were flammable, with evidence of spirits and debris so were likely intended to be incendiary type devices. The devices were removed to a designated safe site.

The IED's consisted of two plastic bottles containing liquid and metal shards or razor blades and a wick sticking out from the bottle top. The perpetrators, intended target and motivation remain unknown with a BTP investigation underway.

Immediate action required

- Be vigilant - If you see something that doesn't look right follow the HOT Protocol:
 - **Hidden** – Has a deliberate attempt been made to hide the item?
 - **Obviously suspicious** – Does the item have obviously suspicious characteristics?
 - **Typical** – Is the item typical of what you would expect to find in this type of location?
- If something doesn't look right report it to control immediately.
- Download the Network Rail "Be Aware" App from the Network Rail App catalogue. It provides guidance on what to do if you see a suspicious item, witness unusual activity and tells you how to report what you have seen amongst other useful information.
- Ensure you have completed the mandatory Counter Terrorism and Security on the Railway training

For more information visit the Network Rail [security hub](#)
If something doesn't look right, report it to 999 or BTP on 61016.

Safe at heart
I care. You count. We matter.

H&S Alert

TITLE: Articulated Dump Truck Overturn

Date of incident:	1 st September 2022	Incident type:	Plant Overturn
Incident ref:	INC13345	Contractor:	Align JV
Location:	C1.Align South Portal		D&M Plant Ltd
Keyword Search:	Articulated Dump Truck : Overturned Plant : Earthworks : Chalk		

⚠ Summary of Incident

On September 1st 2022 a Volvo 30T articulated dump truck that was transporting treated chalk tunnel arisings within the Align South Portal earthworks area was involved in an incident that led to rotation of the cab whilst tipping.

🧠 Initial Findings

Initial investigation demonstrated a competent and experienced operator who was not fatigued, distracted or under the influence of any drug or alcohol.

Weather and ground conditions were good, and the vehicle was stationary and conducting a standard transportation and tipping activity.

The vehicle was in good operational condition and fitted with inclinometer systems and other safety systems.

It is considered that the chalk spoil may have held in the skip as it was tipped due to its moisture content

The vehicle was on a slight gradient whilst tipping

The cab rotated slowly and the operator nor any other person were injured in the incident.

To date Align have excavated, imported , transported, and tipped more than 3 million cubic metres of material at the South portal involving more than 350,000 ADT vehicle movements. This is the first incident of this nature within Align activities.

💚 Actions

Initial briefings conducted with Earthworks team
Full investigation with HIPO review process underway

📷 Photographs





ACTION



Safety Alert

Safe installation of surface laid cables

12 September 2022

Background information

During planned maintenance activities such as vegetation clearance, a number of incidents have been reported involving surface laid cables.



Cables laid in this manner present:

- A slip / trip hazard to the workforce, and / or members of the public seeking refuge
- An increased risk of damage leading to;
 - Possible harm to people
 - Loss of essential services such as CCTV monitoring our network
- A risk of damage to plant & equipment

Guidance:

Raising the Bar 9 – Utility Avoidance, produced by the Highways Safety Hub provides guidance on how to comply with the Supply Chain Safety Leadership Council Common Intent Document on Utility Avoidance.

Raising the Bar 9 guidance advises that:

Duct – Temporary surface cables should be sleeved in purple ducting for protection and visibility and;
Raise – where possible, that ducting should be raised off the ground using boundary fence lines, stakes etc.



Actions

- This is a for **action** safety alert requiring a response via HART to one of the two actions below
 - The closing date for responses is **30 September 2022**
 - Responses will be collated after this date, and will inform future safety assurance activities
1. Each project or scheme is required to record on HART, with evidence, confirming that temporary surface laid cables have been or will be installed as per [RtB 9 Utility Avoidance](#) or;
 2. Where this has not been achieved, provide a plan of how associated risks will be managed

If you have any queries about this safety alert information announcement or any other safety announcement then please contact healthsafety&wellbeing@nationalhighways.co.uk



Safety Advice



everyone
home safe
every day

Improvised Explosive Device found on track

Issued to: **All Network Rail line managers, safety professionals and accredited contractors**

Ref: NRA22-07

Date of issue: 15/09/2022

Contact: Ian Davies, Health and Safety Manager, NW&C



Overview

During a site walkout in Newton Le Willows, an Improvised Explosive Device (IED or homemade bomb) was seen in the 4 foot by the site team. Whilst moving to a point of safety, another similar IED was found in the 6 foot.

Staff evacuated the immediate area and made an emergency call.

The Rail Incident Officer (RIO), British Transport Police (BTP) and Army Bomb Squad attended to assess the devices and they were deemed unviable, in that they would not denotate and were no danger to staff, surrounding homes or the rail infrastructure.

The Army Bomb disposal team removed the devices and confirmed the materials inside were flammable, with evidence of spirits and debris so were likely intended to be incendiary type devices. The devices were removed to a designated safe site.

The IED's consisted of two plastic bottles containing liquid and metal shards or razor blades and a wick sticking out from the bottle top. The perpetrators, intended target and motivation remain unknown with a BTP investigation underway.

Immediate action required


- Be vigilant - If you see something that doesn't look right follow the HOT Protocol:
 - **Hidden** – Has a deliberate attempt been made to hide the item?
 - **Obviously suspicious** – Does the item have obviously suspicious characteristics?
 - **Typical** – Is the item typical of what you would expect to find in this type of location?
- If something doesn't look right report it to control immediately.
- Download the Network Rail "Be Aware" App from the Network Rail App catalogue. It provides guidance on what to do if you see a suspicious item, witness unusual activity and tells you how to report what you have seen amongst other useful information.
- Ensure you have completed the mandatory Counter Terrorism and Security on the Railway training

For more information visit the Network Rail [security hub](#)
If something doesn't look right, report it to 999 or BTP on 61016.

Flash Alert

MORGAN SINDALL
 INFRASTRUCTURE

Project Name	Northumberland Line Project	When - Date	20/09/2022
Project Number	300127	When - Time	11.00
Where:	Ashington Station – Malhotra Land		
Type of event	Learning Event	Investigator	Judith Devlin
Status of IP	N/A	Event Review	20/09/2022
MS Ref	235795	Risk Rating	10
Client / SCO Ref	N/A	HSE Support	

Immediate Cause and Event Overview	Photo
<p>While undertaking works to excavate haul road at our Ashington site an UXO was discovered.</p> <p>The UXO was at ground level and was identified by the archaeologist on site, who was there to undertake a watching brief of the excavation as the area was identified to be of potential archaeological interest.</p> <p>Location was immediately barriered off and site team moved away from area.</p> <p>Emergency services were called who attended site, created a cordon of 100m and sent pictures to their specialists to determine next stage.</p> <p>The bomb disposal unit were dispatched to site, carried out tests on the UXO and determined it to be a mortar (weapon). The mortar (weapon) was taken off site and detonated on a nearby beach as organised by the police.</p>	

Immediate findings	Next steps
<p>PCIP information and supporting risk assessment identified the site as low risk.</p> <p>GPR survey had been conducted in the area – extent of this survey was linear in nature to discover potential buried services and tracing them, and not to determine potential voids of this type.</p> <p>Works stood down in this area until further guidance sought from UXO specialists.</p>	<p>Contact made with organisation who compiled the risk assessment and additional information provided. They will review all information and advise on next steps for location.</p> <p>Emergency services to be contacted to obtain incident report for files if possible.</p>



ACTION



Safety Alert

Drone Incident – Parrot Anafi

12 September 2022

Background information

- On 26th August 2022, an incident occurred near the M27 Hamble Bridge involving a Parrot Anafi drone being operated by Jacobs on behalf of National Highways. The operation was being carried out in accordance with the activity’s GG104 Safety Risk Assessment.
- The incident occurred on the final flight of the day, with no issues experienced up until that point.
- When surveying the M27 Hamble Bridge structure, at an altitude of 20m, the aircraft began to display a number of ‘wobbles’ and veer left from its stationary position, towards the network.
- The Chief UAV Pilot on site took control of the aircraft and initiated a forced landing, resulting in the aircraft coming to a halt in a nearby tree.
- No injuries to persons or damage to assets were caused as a result.
- The incident was reported by the Operator (Jacobs) to the Air Accident Investigation Board (AAIB) and Civil Aviation Authority (CAA) in accordance with CAP 382.
- The aircraft involved has been quarantined, until the AAIB confirm it may be released.
- The National Highways Drones Governance Hub (DGH) shall liaise with the Operator (Jacobs) and the manufacturer to determine the cause of the incident, and identify any mitigations which may be required.



Actions

- Do not use the Parrot Anafi drone on National Highways projects or schemes until the outcome of the incident investigation is known.
- Each National Highways project / scheme to acknowledge receipt of this safety alert (via HART) by Fri 23 September 2022.

If you have any queries about this safety alert information announcement or any other safety announcement then please contact drones@nationalhighways.co.uk



If you have any feedback or if you would like to contribute to the next issue of STOPThink! please contact:
anjni.thakrar@octaviusinfrastructure.co.uk

24 SHEA hotline:
+44 (0)1737 944 720

Octavius Infrastructure
Fourth floor, 45 London Road, Reigate RH2 9PY

+44 (0)1737 944 830 hello@octaviusinfrastructure.co.uk
[octaviusinfrastructure.co.uk](https://www.octaviusinfrastructure.co.uk)



STOP.
Think!

September 2022