



octavius

Please consider the environment, do not print this document unless you have to.



**STOP.**  
**Think!**

August 2022

**Make better  
decisions.**

[Octaviusinfrastructure.co.uk](http://Octaviusinfrastructure.co.uk)

# Contents

Section	Page No.
<b>Introduction</b>	
John Dowsett	3
STOPThink! Cascade survey	4
<b>STOPThink! Moments</b>	
Thames Water – advice on water use	5
Damage to water main	6
Extreme weather – fire risk	7
<b>Looking after our planet</b>	
Bincombe team build bird boxes at local school	8
White-clawed crayfish	9
The most eco-friendly countries	10
Wellbeing Wednesdays	11
What3Words for precise location	11
Lunch and learn: The circular economy	12
M25 One Community newsletter	12
Lean sessions	12
<b>Sharing</b>	
Urgent action: quarantine specific lithium Ion LED work lights	13
Track Worker Safety programme update	13
Fined for death of seven year old boy - review site security	14
<b>Sharing our successes</b>	
Emergency test drills best practice	15
NSCD success	16
Rail Service complete 9-day blockade	17
A46 Binley open for traffic	18
Excellent customer satisfaction at Binley	19
CIHT award finalist	19

Section	Page No.
Launch of QS Development Programme	20
Work experience delight	20
<b>What good feels like</b>	
A46 Binley Thrive report	21
Flitwick transport interchange Thrive report	22
Gade Valley project Thrive report	23
Hertfordshire framework Thrive report	24
<b>Looking after yourself and each other</b>	
Five ways to wellbeing – give to others	25
Employee Assistance Programme	25
Health and Wellbeing topic of the month - Dust	26
Healthier Highways	28
<b>Toolbox Talks</b>	
Site security	29
Dust and air quality	31
Warm weather	32
<b>SHEA statistics</b>	
Improvement Opportunities - July	34
SHEA performance summary - July 2022	35
<b>External alerts</b>	
Urgent action: quarantine specific lithium Ion LED work lights	36
Mini digger overturned	37
Operative struck by falling scaffold toe board	38
Low loader reversing incident	39
Blower chamber incident	40
False widow spider	42
Mobile phone use	43

## Welcome



### Gatwick tragedy

Unfortunately, I start this month's edition on a sombre note. I am sure that you will have already heard that tragically, a member of the wider rail family was killed in a terrible accident on a Network Rail Southern site at Gatwick. Whilst we do not yet know any details of the event itself, just the knowledge of the fatality had quite an impact on me when I first heard the news.

Not only did I naturally reflect on the devastation that this will have had on the family and friends of the person, I also really felt for everyone working on the project, including those leading it from both Network Rail and the contractor.

It really is a sobering reminder of the risks that we face every time we put our people to work in the environments that we do. We can never be complacent; we must never think this couldn't happen on one of our projects and always be vigilant of the risks that we face. Most importantly, we must never lose sight of the fact that safe and assured delivery remains our number one priority in everything that we do. There can be no compromise.

### Breaking new ground together

On a happier note, I am incredibly proud that we have signed up to the Global Equality Collective (GEC) to support promoting diversity, equality and inclusion (DEI). The GEC's mission is to change the world one conversation at a time, and they are creators of the world's first DEI app for schools and businesses, providing all the data, information and education needed to break new ground in diversity, equality and inclusion.

This key step in our own journey to becoming more inclusive coincided with the remarkable achievements of the English Women's football team winning the Women's Euro 2022 tournament!

It was fantastic to see a record attendance at Wembley as the team brought home the first major international football trophy for any England team since 1966. It really was an incredible achievement and I truly hope that their efforts inspire a new generation of girls to play football and help to generate more equality in our national sport.

It has been interesting to see the various responses to their success; with some male reporters being hugely supportive championing the growth of the women's game. Unfortunately, it has also been evident that many still have a blind spot as to the roots of the inequalities that exist. In the workplace, how many of those blind spots still exist in our industry? Whilst we might like to feel that we have a more level playing field than in football, are we really far along that journey as we think we are? We are certainly not as far along as we should be.

### Being carbon neutral and achieving net zero

Progress to net zero is something that we recognise as being fundamentally important to our business, our people and our customers and I am delighted that we have, through positive actions, achieved carbon neutrality. Through our commitment to carbon offsets, we have been compensating for our emissions since January 2022. In parallel, have further developed our Carbon Reduction Plan, guidance documents and have held carbon bitesize awareness session. In July, 63% of all the fuel we used was Hydrogenated Vegetable Oil; much of our welfare hire equipment and plant uses renewables energy source instead of diesel. These are just some of many steps that we are taking to be net zero by 2030.

As the average temperatures reached new highs over the summer and hose pipe bans are being enforced across the country, it has never been more important that we have plans with actions. We must all take action now, set ambitious targets and work together to create a cleaner, greener environment solutions that protect our planet.

### STOPThink! cascade survey

The cascade has been produced each month for over 12 years and whilst it has evolved quite a lot, we want to ensure it continues to meet the needs of its audience and remains relevant to everyone. Therefore, please can you take five minutes to complete the survey and tell us your honest opinions.



John Dowsett CEO – Octavius  
Infrastructure Ltd

## Tell us what you think about our STOPThink! cascade

We want to be sure that we're sharing content that's interesting and of value to you; content that will help us all think differently, make better decisions and change lives.

Please take a few moments to complete a short survey to help us understand what you like, and dislike, about the cascade so that we can make sure we share what is relevant and interesting to you.



**Scan the QR code or click the image to  
access the survey**

## Thames Water – advice on water use



Dust suppression is important to manage dust on site. Over the next few days water for this application should be used sparingly. Responsibility of the Site Manager, Environmental / SHE Advisor can be contacted for advice.



Always act to prevent or stop leaks as soon as possible.

### What's happening?

- With temperatures soaring for the next few weeks, Thames Water is urging businesses across their region to watch out for water wastage as the environmental impact of hotter weather takes effect
- Water use could reach unprecedented levels over the next few days
- At peak times on hot days, customers in some areas are using water faster than it can be safely treated This current high demand will also reduce reservoir levels quicker than usual
- The surge in demand could mean low pressure or interruptions to local water supplies during peak times

### What can our business do?

Making a few small changes will add up to a big difference. Key things we can do to help are:

- **Reduce the total volume of water** our business is using. Share innovative ideas with others in the business
- **Stop or reduce heavy water use during peak times** – (7am-11am and 4pm-11pm) where possible
- **Do we have capacity / capability to store water on site (tanks)**
- **Check for leaks on toilets, taps and urinals.** Even a small constant dribble can waste 200-400 litres a day – as much as a family of four's total daily use
- **Stop urinals from flushing overnight.** Even if we don't have sensors fitted, turning off the flow to the urinals could save you thousands of litres every day
- **Educate our staff about saving water.** Undertake a TBT on minimising water use

### Immediate action

1. Review your own water, ensure it's used sparingly and undertake checks for leaks. Report to the Environment Team (Zach Pears or Chris Grimes) what actions you have taken to use water sustainably



## Damage to water main



Fracture in the 9" cast iron water main

### What Happened?

On 26/07/22 at the EHA Flitwick Travel Exchange Works, a sub-contractor for Octavius was laying a new drainage duct route. The drainage was laid successfully using hand dig methods adjacent to a 9" cast iron water main and the excavation was backfilled and compacted. A 14 ton excavator was tracked over the freshly backfilled excavation to exit the works area. Shortly after a large volume of water was noticed appearing from the excavation. The investigation to establish causation is ongoing and conclusions will be shared in an update following the finalization of the findings.

### Impacts

- There was a potential for an environmental pollution event to have occurred due to water run-off.
- There were a number of local residents who reported low water pressure.
- There was a local business that lost water supply for a short time.
- Reputational damage to the business.
- Potential loss of community support for the works.



Temp repair to the 9 " cast water main.

### Immediate action

- Anglian Water was called to site to undertake a repair to the pipe and restore water supply.
- Existing risk assessments reviewed to ensure that controls for the activity are still suitable and sufficient.
- Review planned works in the area where the 9" cast iron main runs to establish if a re-route/re-design is required.

### OIL Staff and our Suppliers must confirm:

- Known services have been identified and protected ahead of works.
- That risk assessments for the works have been briefed to all persons involved in the works.
- That asset owners have been consulted as part of the planning of the works and where required attend site if our excavations are likely to have an effect on 3<sup>rd</sup> party apparatus.
- That access and egress of plant from a works area is properly planned to avoid plant movement directly over fresh excavations and/or known services.
- In the event that you are unsure of how to proceed, STOP THINK and consult with your manager or SHE advisor.

**STOP Think – It's OK to speak up and stop work if you have concerns**

## Extreme weather – fire risk



As you are aware, the hot weather continues, and this presents an ever-increasing risk of fires.

There have already been several lineside fires on Network Rail controlled infrastructure (which have not yet led to significant damage or loss), and this fire risk is also present on National Highways infrastructure as well as at our projects and sites.

### Immediate action

While the hot weather prevails and with this increasing fire risk in mind could you please, as a matter of urgency, remind all staff and suppliers working on our sites, reactive maintenance work locations and other projects to be extremely vigilant in relation to fire risks, particularly those associated with controlling hot work by ensuring compliance with the OIL hot work permit system.

Key reminders:

1. Select alternative methods to hot working if possible, e.g., use a re-bar cropper to avoid disc cutter use.
2. That as a minimum two suitable firefighting extinguishers of the correct size and type are immediately to hand taking due regard to the hazards that may be present e.g., live electrical equipment.
3. The removal of all potentially combustible materials for the working area and that all non-movable combustible material is covered by non-combustible materials before hot work begins.
4. That all workers have been trained to use firefighting equipment correctly in order that any small initial fire can be extinguished before it takes hold (without taking personal risks).
5. If hot work is unavoidable where dry vegetation is present, then the fire hazard rating on the permit is changed to high and the fire watch duration be increased in length accordingly. This will mean that hot working in such instances be stopped earlier than planned to allow the fire watch to be completed in time.
6. Smoking arrangements at your site are reviewed to ensure that smoking and smokers waste materials are properly controlled and not liable to start a fire.
7. If necessary, review and revise your site fire risk assessment.



**STOP. Think!** - Where fire risks may be significantly increased due to the extreme weather e.g., where dry vegetation is present and hot work is being considered then, if possible, cancel / avoid / delay any such hot work to a safer time.

## Bincombe team build bird boxes at local school

The Bincombe Wood Cutting project team collaborated with our customer, Network Rail to deliver a 'Leave a Legacy – Bird Box Building' activity with a local primary school.

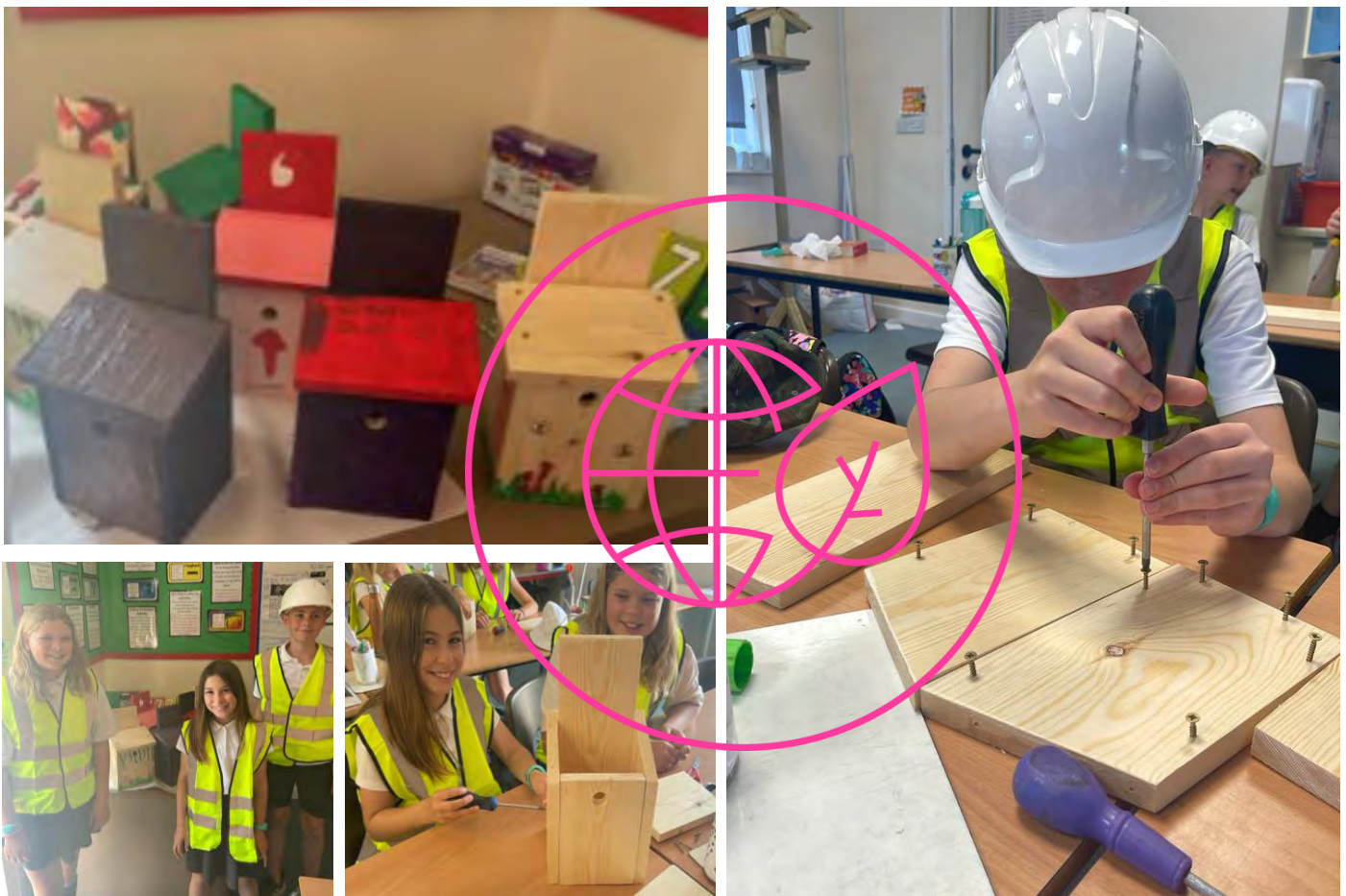
In May 2022, our project team started on site at Bincombe Wood Cutting to undertake works to stabilise a failing asset. Our team worked closely with Network Rail to ensure that all ecological risks were reduced or mitigated prior to starting work on site. To carry out the works safely, some tree removal was required.

To support with this and create a sustainable legacy our project team contacted a local primary school for a Year 6 group to help build bird boxes.

The teams spent a day working with the school and Karl Novis, Project Manager gave a short presentation on the works being carried out and the importance of looking after the environment.

Sunnyside Rural Trust provided the team with the bird boxes in a 'flat pack' style, for easy assembling with the children in the classroom and also helped to deliver the packs to the school.

Thank you to everyone involved for leaving a sustainable legacy for the local area.





## White-clawed crayfish



White-clawed crayfish (WCC), an omnivorous crustacean, is the UK's only native freshwater crayfish that inhabits small freshwater streams less than one metre deep. They hide beneath stones, rocks and in small crevices where they forage for food; camouflaged by their bronze-coloured shells with pale cream or rose-coloured undersides on their claws. They are found in scattered locations across England and Wales but are almost entirely absent from Scotland, with an estimated 70% population loss in the UK since the 1970's.

They are declining in population as a result of poor water quality and poor-quality aquatic habitats but also primarily because of the introduction of the non-native, invasive North American signal crayfish which has introduced disease that our native species have no resistance to. The native, White-clawed crayfish is recognised as 'Endangered' by the International Union for Conservation of Nature (the IUCN) and is on the Governments section 41 priority species list. The White-clawed crayfish is an indicator species, meaning their presence alone is a good indicator of high water quality and healthy aquatic environments as they struggle in poor water and associated poor habitats.

In habitats such as rivers and streams where engineering works such as scour protection will impact the environment, ecologists will need to undertake a series of surveys to determine water quality and the presence of WCCF. Traditional surveys involve ecologists wading through water and checking under stones for evidence of the species, this is usually carried out between July and September. A newer technique includes collecting water samples for laboratory analysis to confirm the presence of WCCF through e-DNA between the months of May to November. A licence from Natural England is required to survey for WCCF.

If you or your team notice a crayfish, please let your site manager know and contact your local environment team or Naturally Wild for support and advice.

With thanks to Graeme Skinner MRSB, Managing Director Naturally Wild.



## The most eco-friendly countries in the world

According to Paul Stenberg a professor in political science and environmental policy, these are some of the amazing countries forging the way in being known for environmental awareness and promotion. Here are some great locations to holiday this summer:



### The most eco friendly countries

**Costa Rica**  
90-98 % of Costa Rica's energy is renewable.  
No other country has done more than Costa Rica with respect to protecting biological diversity in terms of forest conservation and forest regrowth. Educational attainment is very high helping to pioneer the idea of ecotourism.

**Denmark**  
Denmark is amongst the most progressive for greenhouse gas emissions, biodiversity and habitat creation. Is a world leader in wind power and has been successful in creating innovative ways to negotiate land use and planning decisions with affected communities.

**Sweden**  
Sweden has extensive hydropower, is planning to build what will be the world's largest single offshore wind farm and is leading the way with green measures including green steel.

**Cuba**  
Cuba has led the way for decades in sustainable agriculture. Cubans have long innovated in the science and practice of sustainable agriculture by using less fertilizer, fewer pesticides.

**Mexico**  
Mexico has progressed more than any country in the world promoting forestry practices which actually ensures that local communities benefit. Many local communities run their own forestry operations and decide how the revenues are apportioned.

**Singapore**  
40% of water waste is recycled. Singapore is innovative in many regards, particularly when it comes to water reuse system. Singapore turns its sewage/toilet water into clean water, some of which is used back in the drinking water system.

## Wellbeing Wednesdays

August's session focused on "Food to boost your mood" where Ruth Busby, and Nutritional Therapist Francesca Liparoti explored the relationship between what you eat and how you feel, including tips on how to incorporate healthy eating into your life.



If you missed the session you can [watch it on demand](#).

Further information and help is available at:

- [Mind](#)
- [Food for the Brain Foundation](#)
- [NHS](#)

September's session will be a preview of this year's Rail Wellbeing Live event. [Register your attendance for the September session on the Rail Wellbeing Live website.](#)

Wellbeing Wednesday livestreams are hosted on the first Wednesday of each month. They can be viewed live at 11am or later on catch-up. Please do subscribe via their website!

**Whilst it is being delivered in partnership with Network Rail, the content applies to EVERYONE and you are all welcome, regardless of where you work.**

[www.railwellbeinglive.co.uk](http://www.railwellbeinglive.co.uk)

## What3Words for precise locations during emergencies

Being able to give your precise location in an emergency can save vital time and lives.

Make sure you're prepared by downloading the free What3Words mapping services, which is more accurate than post codes to help emergency services know exactly where the emergency is.



The "What3Words" service has mapped the globe into a series of 1m x 1m squares and each and every square is identified by a unique 3 word code. When used with GPS, the three words provide an accuracy of between 1m and 10m, depending on coverage, enabling you to locate something with much greater accuracy than a postal address could ever give – especially in locations where a postal address doesn't work! Anyone with these words and access to the "What3Words" App or website will be directed to this exact square on the map!

**Why not add the "What3Words" code to your project record? This will help others find your site and provide directions.**

1. Visit the ["What3Words" website](#) or [download the mobile application](#) to find your site location.
2. Extract the unique three words.
3. Open your contract record on Atlas SharePoint. If you are set as an administrator of the contract, you can add a new address.

## Lunch and learn: the circular economy

In collaboration with our partner, Supply Chain Sustainability School, we will be holding a lunch and learn looking on the Circular Economy on Monday 3 October.



This session will introduce you to the concept of the Circular Economy, provide you with an understanding of the key elements and what it means for the built environment. Here are some key things you will learn about:

- The principles of the Circular Economy
- The drivers for moving towards a Circular Economy model
- The benefits of adopting circular thinking.

The session will be held virtually, you must [register your attendance](#) to receive the joining instructions.

Everyone including Octavius employees, our suppliers and customers are welcome to join.

## Be leaner: remove TIMWOODS

TIMWOODS is an acronym to help people identify the eight wastes: transportation, inventory, movement, waiting, overproduction, over-processing, defects and skills.

Not identifying or ignoring waste leads to continuously getting things wrong; rectifying these errors leads to even more waste. As a result, productivity and efficiency decrease, increasing production costs. Lean is proven to cut cost, increase production and give you a nicer working environment.

If you would like to learn more about how you can eliminate waste in your own work portfolio to work more efficiently join the next Lean session on 15 November. You can book your place on the LMS system via SharePoint or contact [Kim Wild](#). The session is open to everyone across our supply chain.

## M25 One Community newsletter

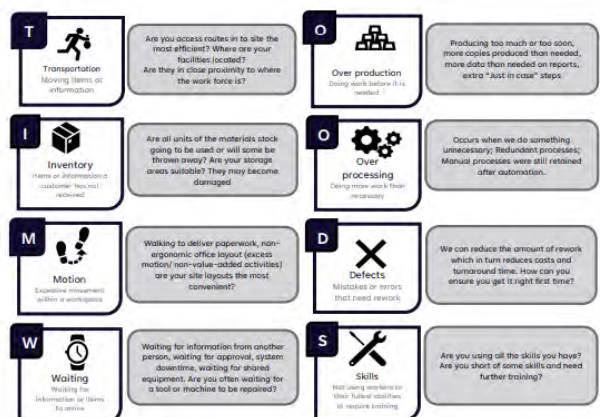


The August edition of the “M25 One Community Newsletter” is now available. The newsletter showcases projects and shares stories of successes, best practice, and initiatives from across the M25 Community

The One Community comprises six main supply chain partners: Milestone Infrastructure, Jackson Civil Engineering, Tarmac, R&W, Connect Plus Services and Octavius, plus our wider supply chains.

Together we focus on promoting and encouraging a culture that enhances the health, safety and wellbeing of all those within our M25 Community.

### [M25 One Community Newsletter – August](#)



# Urgent action: quarantine specific lithium Ion LED work lights

Network Rail have issued a Safety Alert NRA22-04 following a fire which destroyed a Network Rail depot in Northampton on 28 June. The fire was likely caused where lithium Ion batteries were being used to charge a Ledlenser IF8R task light.

### Immediate action required:

- Temporarily suspend purchase or use of any Ledlenser IF8R task lights.
- Quarantine all existing lights of this model. The battery should be removed from the light unit and both the light and battery should be placed in your usual quarantine area.
- Whilst in quarantine the batteries must not be used inside a metal container or allow contact with other battery terminals.

**Safety Advice**  
Action required following a serious incident.

**URGENT – quarantine certain Lithium-Ion LED work lights**

Issued to: Network Rail line managers, safety professionals and accredited contractors  
Ref: NRA22-04  
Date of issue: 27/07/2022  
Location: Northampton, North West & Central  
Contact: Ellen Wintle, Infrastructure Director, West Coast Mainline South, NW&C

**Overview**  
Investigation of the fire which destroyed a building at Network Rail's Northampton depot on 28 June has indicated a particular model of LED site light may be the cause. Evidence shows the fire started where Lithium Ion batteries from a Ledlenser IF8R task light were being charged. The fire could have started from the charging cable/plug or the batteries themselves. It is clear that the initial fire was made more intense by the batteries.  
The lights were fairly new but depot staff had already changed how and where they charged the batteries because they became hot. The team had stopped charging them in vehicles and were charging them in the depot stores, positioned vertically rather than flat side down to limit heat transfer.

This type of lighting falls outside the product acceptance process and is classified as an ancillary item.  
The I-Store catalogue number for this light is 0111122069 (and 0111122068, a duplicate). It was added to the catalogue when standard products were refreshed in September 2021. Since then at least 79 have been purchased in I-Store. But some customers, and members of Network Rail's supply chain may have ordered others through another supplier.  
There is no indication that other models of Lithium-Ion worklights have the same problem.

**Immediate action required**

- Temporarily suspend purchase or use of any Ledlenser IF8R task lights.
- Quarantine all existing lights of this model. The battery should be removed from the light unit and both the light and battery should be placed in your usual quarantine area.
- Whilst in quarantine the battery must not be inside a metal container or allow contact with other battery terminals.

Part of our group of Safety Bulletins

Safety Alert | Safety Bulletin | Safety Advice | Shared Learning



# Safer working environment for our people

Network Rail set up the Track Worker Safety Programme to make it safer for people to work on or near the railway and introduce new technology to keep people off the railway as much as possible. As a result of the delivering huge changes, particularly in the last year, Network Rail have achieved a major milestone as the ORR have now closed the improvement notices issued in 2019.

Just over 24 months ago, 35% of railway work used a lookout – the lowest form of protection against trains for track workers. Today, Network Rail don't have any mainline sites which use lookouts and now, the only places lookouts are used is in a few isolated locations such as low speed, low risk depots or sidings which is less than 0.1% of Network Rail's total work; and there are plans to end this too.

Near misses and Operational Close Calls have significantly reduced and new access points and walkways have also been created to improve safer access to the railway. The journey to keeping track workers safe isn't over and plans are currently being pushed forward to implement additional protection on all line blocks, plus trialling new technology such as drones and geofencing.

**Thank everyone for who has collaborated with Network Rail in the programme to make sure everyone goes home safely.**

## Finied for death of seven year old boy

### Review your site security during school holidays

A civil engineering firm has been fined £600K for safety breaches after a seven-year-old child became trapped and suffocated on a construction site. Conley Thompson went missing on the morning of 26 July 2015 and was found the next morning by workers at the construction site. An investigation by the Health and Safety Executive (HSE) found that Conley had become trapped in a drainage pipe, which had been fixed into the ground in preparation for the installation of fencing posts. Tragically, he had suffocated before being found the next morning when work restarted on site.

HSE found that there was insufficient fencing in place to prevent unauthorised persons from accessing the construction site due to a combination of poor planning, management and monitoring of the site and its perimeter.

HSE inspector said: “Conley should never have been able to be on that site. He should have been kept out. The construction industry should be aware of the dangers of construction sites to members of the public and any other unauthorised persons. The dangers to children gaining access to construction sites and treating them like a playground is an ongoing problem which must be addressed at all types of sites no matter what their complexity or size. The industry must do all it can to ensure children can’t access construction sites and be exposed to the inherent risks they present to prevent further tragedies like this from occurring”

The Network Rail, Southern Region Capital Delivery team have produced a fantastic poster highlighting how children can easily access work sites. You can download the poster on the [Southern Shield website](#).

**With the school holidays underway, please review your site security to prevent unauthorised access.**

- Always lock and secure access points to sites at the end of the working day
- Close and repair gaps beneath gates and fences that can be crawled through
- Remove keys and leave all plant and equipment secure
- Any signs of trespass, such as damaged fencing or well-worn paths should be reported and areas made secure
- Ensure open excavations are fenced off
- All flammable materials, potentially hazardous substances and gases must be removed or made secure
- Remove or block access to height.



## Emergency test drills best practice at Ryde Pier



Ahead of planned works to the 19<sup>th</sup> century Ryde Pier on the Isle of Wight in September, the One Team Wessex team successfully completed a test emergency rescue drill to practice the quick and safe recovery of a person in the sea. During the test six people used a safety boat to rescue a dummy from the sea and tested rescuing a person from under the pier; learning valuable lessons to improve the rescue operation plan.

Working near the sea is logistically challenging not only because of high winds and tides also high interaction with the local community and local business that use boats to deliver goods. The team worked with Wightlink, who own the pier, and other stakeholders to overcome challenges and minimise disruption to the local community.



The £2.4 million design and build enabling works will prepare the pier for wider refurbishment works. The current remit involves procuring long lead items and scaffolding, temporary works design, steelwork surveys, trial installations and creating a safe and secure cable routing for all services.

Ryde Pier extends approximately 665m northwards across the Ryde Sands from Ryde Esplanade station on the north coast of the Isle of Wight to Ryde Pier Head station. The structure was originally constructed in 1880 and critical renewal and refurbishment work is now required to allow trains continue to run safely. The grillage deck structure carries a two-track electrified railway which serves passengers travelling between the Isle of Wight and Portsmouth by ferry. The works will provide a more reliable and efficient railway for passengers and will increase the life expectancy for the line for approximately 60 years.

**Well done to the team for successfully planning and carrying out the emergency drill to ensure everyone working on or near the project is safe.**

**This is a fantastic display of collaboration between our customer Network Rail, Wightlink and supplier Rebel Marine. Well done to everyone involved – an excellent start to the project!**

## Delighting our customer - positive feedback for NSCD success



Congratulations to the Electrification and Plant (E&P) team for successfully testing and commissioning the final NSCD's (Negative Short Circuiting Devices) in the NSCD Tranche 1 Programme. Since the programme started in August 2021, the team have completed the works without any accidents or incidents .

The programme installed a total of 52 NSCD's at 12 locations within Network Rail's Wessex region, at: Merrow, East Clandon, Effingham Junction, Cobham, Ashtead, Leatherhead, Epsom, Ewell West, Motspur Park, Worcester Park and Claygate.

The purpose of the project is to make the possession isolations process safer and more efficient by rolling out NSCDs along the route to support a process known as the B4 Isolation process. An NSCD provides protection to people working on or around the conductor rail by electrically shorting an isolated section. This protection is currently provided by deploying straps at the start of a possession. In an event of an isolated section being re-energised in error, the NSCDs will prevent the conductor rail becoming live, protecting people from danger of electric shock.

“ Fantastic delivery of what has been an often challenging project. All 12 sites now commissioned and delivered to an excellent standard. I would like to thank everyone involved for the professional and collaborative approach.

The fact that this has been done on target and on budget is superb on its own, but more importantly there has not been a single accident or incident. This does not happen by chance and is down to the meticulous planning and execution of the works by Octavius.

**Perry Baine, Scheme Project Manager  
Network Rail**

**The team have truly delighted our customers and received some excellent feedback for safely and efficiently completing the safety critical works.**

**Thank you to all involved for the highly successful delivery of this project including our supply chain: electrical designers – RPS and Navitas, AJMS – civil designer, CRS- Civil Labour, Lineside Electrical - electrical labour and A&M - electrical installer and test and commissioning sub-contractor.**



## Delivering for our customer on the Kent route

Our Rail Services team successfully completed a 9-day blockage across six stations from Penge East tunnel to Sydenham Hill on the Kent Route, on time and without any accidents or incidents.

The team were commissioned by Network Rail to complete renewals works eight weeks prior to the planned block available and our team quickly co-ordinated with suppliers and visited the sites to arrange the remits.

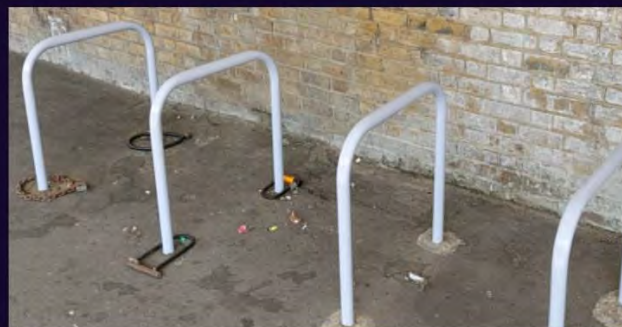
The works consisted of platform remedial works, removing graffiti, painting tactile joints on copers resurfacing access and egress points, refurbishing waiting areas and deep cleaning all platforms, bridges and walkways and subways at all locations.

The line was handed back on time ready for commuters to enjoy the enhanced stations on the Monday morning. The team was praised by Network Rail for their excellent safety record and outstanding site set up with great attention and care for environment.

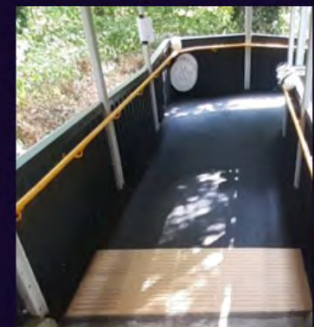
Congratulations to involved in the safe delivery of the works, with particular thanks to Nikki McGeachy and Mark Hooley for their development, management and delivery of the works. Also, our direct labour operatives who went above and beyond in delivering the works, our planning team for arranging late access applications along with the Responsible Manager, Nick Taylor and our suppliers, Kara, New Approach and RJG.



Beckenham junction



Penge East



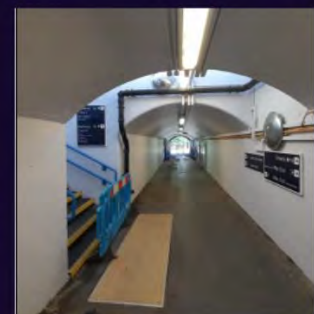
Sydenham Hill



West Dulwich



Herne Hill before and after



Kent House

## A46 Binley open for traffic

Enormous congratulation to the A46 Binley team for opening the new £61m flyover at Binley on the A46 in Coventry on the morning of 29 July.

Separating long-distance from local traffic, the first vehicles used the 14,000-tonne flyover at 04:38hrs under a temporary 40mph speed limit, with two lanes open in each direction while work takes place elsewhere on the structure.

The new flyover will reduce congestion, make journeys safer and means drivers staying on the A46 will no longer need to slow down to use the roundabout.

Octavius began working on the scheme, which is part of National Highways A46 Coventry Junctions upgrade, in 2020. We'll continue working at Binley until Autumn with slip road closures required while we complete the final stages of the project.

A huge Thank you everyone including key suppliers for working hard to deliver the works.

With particular thanks to COWI, Sweco, HW Martin (Traffic Management) Limited, Carney Construction, Van Elle, Extrudakerb (Maltby Engineering) Ltd, Tarmac Contracting & Foundation S.A.L., Severfield, McDermott Building and Civil Engineering Ltd, Mason Street Furniture (MSF), A & A LAMB LIMITED, WJ Roadmarkings, (SW) LIMITED, Beechwood Trees and Landscapes Ltd Arcadis and Reinforced Earth UK.

[Click to watch a video of the first cars on the new flyover.](#)



### Excellent customer satisfaction at Binley

The A46 Binley team have achieved another fantastic result by scoring 99% on the National Highways July customer audit, placing the scheme in joint second place out of 20 for Major Projects nationally.

Jarrold Parkin, Schemes Delivery Lead said “We are always striving to be the best we can be, carry out works to a high standard and keep our people and the public safe whilst keeping disruption to a minimum and ensuring customers are kept accurately and reliably informed to allow them to plan and make their journey. Every month National Highways carry out a ‘secret shopper audit’. Assessors travel as a passenger through the scheme to provide feedback on the works taking place. Assessments are based on their objective observations and subjective perceptions; as well as feedback on how safe they felt. We review the feedback and identify areas where we can improve and make changes, for example we have implemented additional information signs about the work which is ongoing. This approach has seen our scores improve month on month and we have never scored below the required minimum of 85% and on average our scores have been 90% or above”.



The team are also currently reporting zero in all health and wellbeing statistics, achieving over 250,000 hours work since a lost time accident. This fantastic result is due to the teams hard work implementing improved reporting of minor spills, frequent audits, inspections and hold regular stand down days to educate and communicate our behaviours and culture with our workforce.

Well done to the team for delivering a high quality service for our customer and continuously improving to keep everyone safe.

### CIHT award finalist

Congratulations to Charlie White, Graduate Engineer at A46 Binley site who has been shortlisted for the Chartered Institution of Highways and Transportation (CIHT) Young Professional Of The Year Award. The award recognises and celebrates young professionals who making a difference in our industry and who have contributed to the advancement of the transport profession early in their career.

Jarrold Parkin commented “Since Charlie joined she has impressed myself and the wider team with her dedication, enthusiasm and genuine interest for construction as a whole. Charlie is inquisitive, insightful and raises many Improvement Opportunities that she has helped to implement such as a wildflower garden in the office compound, segregated recycling facilities and improved site tidiness.

She has delivered some fantastic work, most notably engaging with local schools and Universities to promote both our project and the construction industry. I believe she is a credit to herself the industry and to women in construction and engineering.”

The winner will be announced in April next year. **Good luck Charlie!**



## Learn grow and thrive

### Launch of Quantity Surveyor Programme

We are delighted to announce the launch of our new Quantity Surveyor Development Programme which has been launched into the market for the first time last month. This programme has been created by a Working Group led by Will Mann with Oscar Davies, Thomas Reid, Alyssa Giannetta and Hilda Hidzir who have brought great energy, insight, dedication and knowledge into creating this programme. We are very proud of what has been achieved and looking forward to welcoming new great talent onto the programme next month.



We're looking forward sharing more about our new team members soon!

## Work experience delight with our One Team Wessex team

The One Team Wessex were delighted to receive fantastic feedback from Olivia B, a student who recently spent work experience time with the team.

Olivia spent time with our commercial and engineering teams and she spent two nights with our Surbiton Congestion Relief site team where she was given the opportunity to learn about the use of pre-cast concrete structures, which she found particularly interesting, and the challenges of managing infrastructure projects.

This lovely demonstration of her appreciation just shows just how important it is to capture the enthusiasm of our young people:

“

This has been a very beneficial experience; I've had the opportunity to experience three very different components of civil engineering. This has put many of the concepts that I've learned about at university into perspective and I'm sure will benefit me in my future learning. The advice from many engineers have assisted me in deciding to take a placement year in my third year of study, a decision I was unsure about. This whole experience has allowed a broader understanding of civil engineering.

”

Thank you to all for making sure that Olivia had a great experience during her team with Octavius.

## The A46 Binley Thrive report to end of July 2022



### £307,850.79 total social value added\*



#### Local value

9 Job Creations

2 Contract awarded to local business

£267,696.00 Value contributed to job creations



#### Employment, education & skills

11 People employed from under-represented groups

21 Work placements completed

150 People hours spent on education engagement activities



#### Sustainability

740 People hours spent protecting & improving the environment

2840 Tonnes reduction in waste to landfill



#### Social, wellbeing & community

413 People hours supporting the community

£492.00 Community donations

£1,332.00 Community fundraising

9 Mental Health First Aiders



Octavius Infrastructure Working in Partnership  
with National Highways

\*including local economic value

# The Flitwick Transport Interchange Thrive report

To end July 2022



## £774,144.84 total social value added\*



### Local value



6 Local hires

£292,642.00 Local spend

£104,281.00 Value contributed to the local economy by local hires & job creation

### Employment, education & skills



260 People hours of learning interventions delivered

1 Work placement

177 People hours spent on education activities with local schools

### Sustainability



9 People supported with sustainable travel

Electric car charging points & direct electric to eco cabins on site

3715 Tonnes waste recycled instead of landfill

### Social, wellbeing & community



£5,926.00 Community donations

57 People hours spent supporting community initiatives



Octavius Infrastructure Working in Partnership with Central Bedfordshire Council

\*including local economic value

## The Gade Valley Thrive report to end of July 2022



### £14,337,614.35 total social value added\*



#### Local value

67 Job Creations (of which 63 Local Hires)

£11,551,767.00 Local spend

£2,568,997.00 Value contributed to local hires & job creation



#### Employment, education & skills

2052 People hours learning interventions delivered

11 Work placements & 32 Apprenticeship weeks completed

198 People hours spent on education engagement activities



#### Sustainability

255 People hours spent protecting & improving the environment

Solartainer & Hydrogen Tower lights used instead of generator

HVO fuel used instead of diesel reducing carbon emissions by 97%



#### Social, wellbeing & community

406 People hours supporting the community

£80k Community donations  
£29,640.00 Community fundraising

3 Mental Health First Aiders and  
£14,828.00 Value contributed to improve the workforce physical wellbeing



Octavius Infrastructure Working in Partnership  
with Connect Plus

\*including local economic value

# The Hertfordshire Framework Thrive report

Jan 2022 to end July 2022



## £264,431.89 total social value added\*



### Local value

6 Local hires

£125,036.00 Local spend

£108,574.00 Value contributed to the local economy by local hires & job creation



### Employment, education & skills

186.5 People hours of learning interventions delivered

1 Person employed from underrepresented groups

57 People hours spent on education activities with local schools



### Sustainability

831 People hours spent protecting and improving the environment

3.2 Tonnes reduction in construction waste

140 Tonnes reduction in waste to landfill



### Social, wellbeing & community

£1,524.00 Community donations

172 People hours spent supporting community initiatives



Octavius Infrastructure Working in Partnership  
with Hertfordshire County Council

\*including local economic value



## Five Ways to Wellbeing – give to others



Five Ways to Wellbeing is a set of simple activities that we can all do in our everyday lives to help find a balance, build resilience and boost mental health and wellbeing. August's Way to Wellbeing is "Give to Others".

There is strong evidence that giving to others has many positive benefits on our mental health and sense of wellbeing. When we give to others it promotes a sense of trust, closeness and cooperation in our relationships.



**Giving to others and the wider community can be incredibly rewarding and creates connections with the people around you. Giving doesn't have to cost anything so why not try:**

- Do something nice for a friend, or a stranger.
- Smile
- Hold the door open for someone.
- Do a chore for your family.
- Say thank you to someone, for something they have done for you.
- Go to a charity shop and donate something you don't use.
- Volunteering in your local community Arrange a day out for you and a friend or relative.
- Sign up for a mentoring project.
- Offer to help a relative with DIY or a colleague with a work project.

Often, it's the little things that can make all the difference. Try "giving" as part of your daily life. It can be a positive step towards living a happier and more fulfilling life.

### Did you know that...

Every year our people are given a Community Day to support the local community or to develop a new skill. If you are interested speak to your Line Manager.

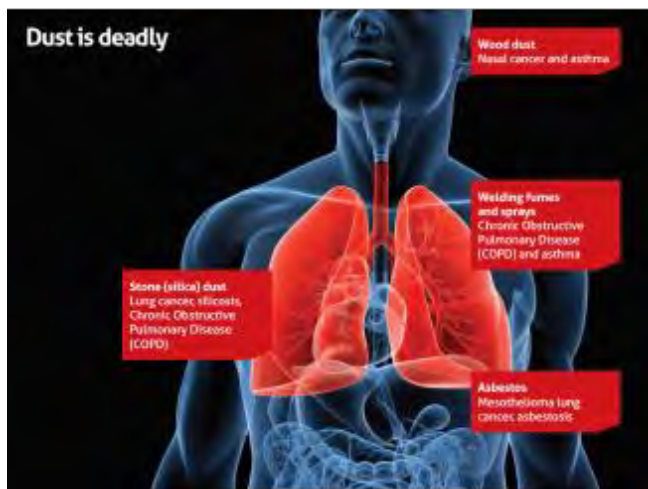
## Supporting You – Employee Assistance Programme (EAP)

All permanent Octavius employees have free access of the Employee Assistance Programme by AXA Health with access to the "BeSupported" website. This will provide you and your immediate family, with information, resources and options to address a wide range of issues both at home and at work. For login details please visit Atlas SharePoint site.

## Dust management and protection

Our campaign for August is all about dust protection advice and information.

Did you know that each year **12,000** workers across Great Britain are estimated to be killed by work-related lung diseases linked exposures to dust?



**15 people** a week die from silica dust exposure in Britain

**7,000 deaths** per year due to respiratory occupational cancer

Construction industry is in the **top five** industries for COPD deaths

There are three main types of dust that can be generated on site;

- 1. Silica Dust** – created when working on silica-containing materials like concrete, mortar and sandstone.
- 2. Wood Dust** – created when working on softwood, hardwood and wood-based products like MDF and plywood.
- 3. Lower Toxicity Dusts** – created when working on materials containing very little or no silica. The most common include gypsum (e.g. in plasterboard), limestone, marble and dolomite.

Breathing in these dusts can cause damage to the lungs and airways and cause diseases such as Lung Cancer, Silicosis, Chronic Obstructive Pulmonary Disease and Asthma. The amounts needed to cause this damage are not large.

**Always make sure the necessary precautions are in place to protect your lungs.**

High dust levels can be caused by:

- **Task** – the more energy the work involves, the bigger the risk. High-energy tools like cut-off saws, grinders and grit blasters produce a lot of dust in a very short time.
- **Work Area** – the more enclosed a space, the more the dust will build up. BUT - never assume that dust levels will be low when working outside with high-energy tools.
- **Time** – the longer the work takes the more dust there will be.
- **Frequency** – regularly doing the same work day after day increases the risks.

### Control the Risks

Look at ways of stopping or reducing the amount of dust you might make. If still producing high dust levels, the most important action is to stop the dust getting into the air. If exposure cannot be sufficiently reduced, respiratory protection will need to be provided.

**REMEMBER...RPE is the last line of protection.**

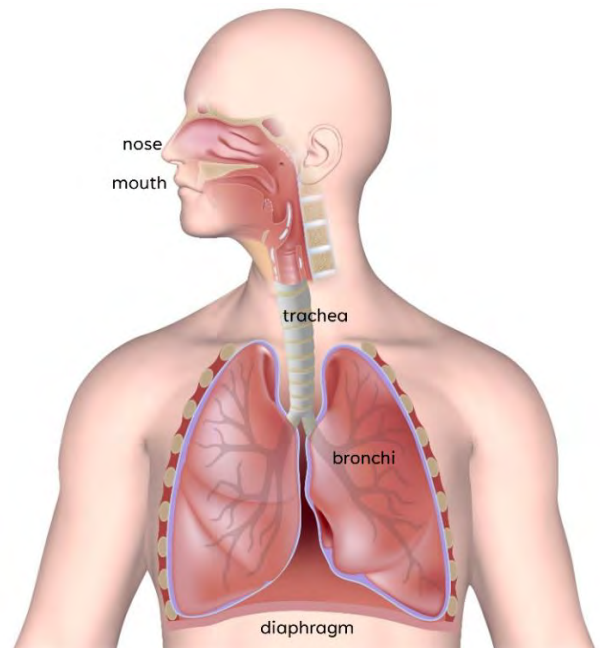
For more details and advice on how to minimise your risks when exposed to dust visit:

[HSE Dust Management](#)

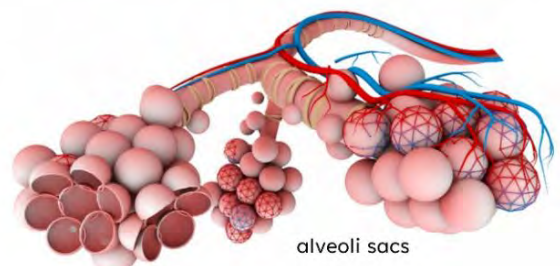


## How breathing works

Breathing is how we get oxygen into our bloodstream and expel carbon dioxide. Air enters through our nose and mouth and travels down to the lungs through a tube called the trachea. This splits into progressively smaller tubes called bronchi. It looks like the branches of a tree. This system is known as the upper respiratory tract. Under our lungs is the diaphragm muscle that helps them expand and contract.



At the very end of the 'tree branches' are the alveoli sacs where oxygen and carbon dioxide are exchanged with the blood stream across a membrane less than 1 micron thick. **Inhalable dust** is the fraction of breathable dust up to 100 microns in size that gets trapped anywhere in the upper respiratory tract. This is the dust you can see. **Respirable dust** is the dust you can't see; with particles less than 10 microns in size. These get right down to the alveoli region like clouds of tiny razor blades.



## BREATHE EASY

Protect yourself from deadly silica dust at work. Depending on what you're doing, your employer will tell you which steps to take – and when. You may need to wear a special mask too.



### 1 USE LOCAL EXHAUST VENTILATION

Use a ventilation system to suck the dust away before you can breathe it in. Some workstations have hoods or enclosures

Local exhaust ventilation image courtesy of Pat Stanley Engineering Ltd  
On-tool extraction image courtesy of Core Cut Ltd

### 2 OPERATE ON-TOOL EXTRACTION

Make sure you use the controls integrated or mounted onto a hand-held tool to capture the dust while you're using it

### 3 DAMP DOWN DUST

Use water to keep dust levels down. You need to use enough water for the whole time that the work is being done. Just wetting the material before you start doesn't work

### 4 WEAR A MASK

Put on a respirator that suits the job – for many tasks, you'll need an FFP3-standard mask or a powered mask or hood if the work lasts longer. Never use a 'nuisance' dust mask – it won't protect you



### 5 GET TRAINED

Understand the dangers of silica exposure, and when and how to use dust controls and protective equipment

Your employer should also think about changing the product or process, for example:

- using a safer material than silica sand in abrasive blasting, like olivine
- getting materials cut to size off-site in a facility where dust exposure can be controlled more easily

## KEEP DUST DOWN

After you've used the right gear and protective equipment, the tiny amount of silica dust next to the coin is the most you should be breathing in a day\*



Silica dust

EVEN A QUICK TASK CAN CREATE DANGEROUS LEVELS OF SILICA DUST – CONTROL EVERY EXPOSURE

SILICA DUST PARTICLES ARE SO SMALL THAT THEY FLOAT IN THE AIR FOR LONGER – AND CAN BE BREATHED DEEP INTO YOUR LUNGS

CONTROLLING SILICA DUST CUTS THE RISK OF LUNG CANCER, SILICOSIS AND EMPHYSEMA



Control dust when you're clearing up after a job – damp down or use an industrial vacuum, and wear your respirator.

\*According to British law – inspired by from country to country

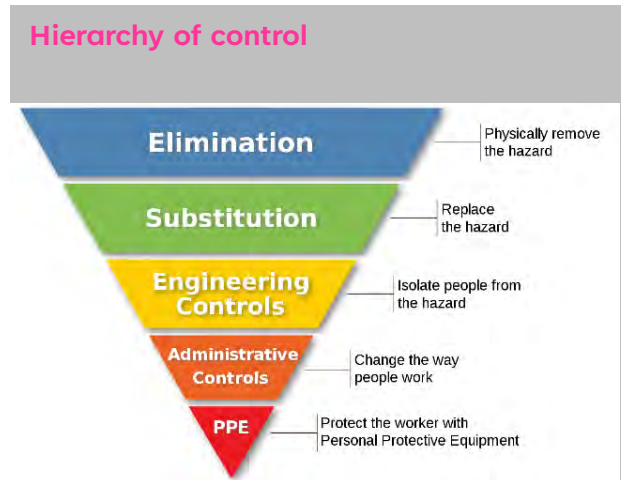
## Healthier Highways on the M25

Often we rely on RPE to protect people from dust, but the Hierarchy of Control provide more effective ways.

Connect Plus, working in partnership with Steve Perkins Associates, Octavius and the M25 supply chain has adopted a holistic strategy to tackle health risks, including dust, on the M25. This collaborative, award-winning initiative is called Healthier Highways.

### How Healthier Highways is preventing dust exposure

- Produced a Toolbox Talk video on dust and noise based on a foreman who now suffers with a breathing condition.
- Online supervisors' dust awareness training course resulting in increased health observations on site.
- Held Stand downs and workshops to raise awareness of dust hazards and risks.
- Developed bespoke playing cards with 52 different health risk questions to stimulate good health conversations. They are being used across the M25 in meetings, workshops and Toolbox Talks.
- Halved dangerous dust exposures in road planning through improved use of engineering controls. The team have one two awards for this initiative: Highways Awards for Best Site Safety Initiative and National Highways Industry Award for outstanding contribution to health, safety and wellbeing.
- Undertaken assessments of accumulated tunnel dust risks to minimise exposures during maintenance works.
- Created Health by Design project to support designs that minimise the production of dusts.



The hierarchy describes the different ways we can control risk. Control measures are more effective higher up the pyramid. The least effective control is PPE.

For respiratory hazards this would be dust masks or respirators. These can fail in many ways e.g. not fit tested, worn incorrectly, not maintained, becoming contaminated.

Elimination is where we physically remove the hazard. For example, designing out the need to cut blocks on site.

**Remember, for control solutions to be most effective, a combination of control methods is required.**

The infographic is titled 'HEALTHIER HIGHWAYS' and features four main pillars, each with a goal and a method:

- ENGAGE people**: to raise awareness of health hazards by delivering an innovative campaign
- EDUCATE our people**: to improve Health protection competence by assessing needs and identifying solutions
- CONTROL health risks**: to protect our people by implementing good occupational hygiene practice
- MANAGE health protection**: to support a sustainable workforce by using strategic health tools & leading metrics

On the right side, there are two award logos: 'Industry Awards' and 'Highways'.



Site security (page 1 of 2)

NetworkRail

# Toolbox Talk

Safety Leadership Team – why a secure site is important

7 August 2015

*Everyone Home Safe Every Day*

**1. Open the discussion by briefing your team on the two recent tragic incidents involving children, one at a construction site and the other in a railway siding.**

Conley Thompson, a seven-year-old boy was found dead on a construction site in Barnsley. Detective Chief Inspector Dave Stopford, the Senior Investigating officer, said: “The results of the post mortem suggest that Conley had, by some means, entered a vertical pipe on a nearby construction site and was unable to get out. Conley’s weight caused him to fall further into the pipe and pushed his clothing up around his body restricting his breathing.”

In a second incident, three teenagers gained access to the railway by climbing over the parapet of a railway underbridge and then under two fences. There was a well-trodden path the teenagers appeared to have taken with a route under the fences having been dug out. When lineside it is believed that one of the group climbed onto an empty coal wagon and came into contact with the live overhead line. He was pronounced dead at the scene.

**2. Discuss with your team**

- *Why do children find our work sites so fascinating?*
- *When are the most likely times for children to try and gain access to our sites?*
- *What can we do to stop children getting onto our sites and help to prevent incidents like these?*

It’s the school holidays and two recent tragic incidents involving children have highlighted the need to keep our sites secure. Use this briefing note to have a discussion with your team about reducing the chances of this kind of incident happening on your site.



The fence where three teenagers gained access to a railway siding and one was killed

Insecure sites also encourage theft and vandalism



Contact us: [shield@networkrail.co.uk](mailto:shield@networkrail.co.uk)

## Site security (page 2 of 2)

NetworkRail

### Toolbox Talk

#### 3. Were all these points considered in your discussions?

- All access points on to site should be locked and secure at the end of the working day
- There should be no gaps beneath gates or fences that individuals can crawl through
- All fences should be secured in accordance with the manufacturer's instructions
- Any signs of trespass, such as damaged fencing or well-worn paths should be reported and areas made secure
- Any open excavations should be fenced off
- All keys should be removed and plant and equipment left secure
- All flammable materials, potentially hazardous substances and gases should be removed or made secure
- If possible, any access to height should be removed or blocked

#### 4. What should you do if you find any of these issues on site?

Please take the time to look around your site and if you see something:

- Report it
- If possible, fix it
- And Close Call it in



*A final word from HSE's Chief Inspector of Construction:*

*"Without proper precautions, construction sites are dangerous places for those who work on them day in day out, never mind the risks to children who simply see them as exciting playgrounds and don't understand the dangers..."*

*... Construction managers should check their sites are secure, and in areas where children live and play they should ensure that risks to children are properly controlled."*



Contact us: [shield@networkrail.co.uk](mailto:shield@networkrail.co.uk)

# Dust and air quality



## Infrastructure Projects Southern Toolbox Talk

Dust and Air Quality

20 June 2016

### The Facts

Dust, odours and other emissions can cause health risks, particularly at very high concentrations.

Dust can also damage vegetation and crops and effect on local wildlife and watercourses.



### What can you do?

- Clean up or damp down any spillage of dry dusty materials
- Store any bulk cement and bentonite in silos, and position silos and stockpiles away from residential areas or watercourses
- Store fine dry materials within buildings or provide adequate protection from the wind
- Ensure cutting and grinding operations are adequately shielded or wetted

### Why does it matter?

#### It can cause environmental harm

Emission of dark smoke from plant, chimneys and fires is illegal. Dust can damage the ecology of a watercourse and affect plant growth

#### It can delay you project

Regulators have the power to stop works if dust or other emissions are causing a nuisance

#### It's a health hazard

Dust can be carcinogenic and may cause eye irritation or make asthma worse. Odours may cause nausea, dizziness or fainting.

#### We need to respecting our neighbours

Dust can settle on neighbours' properties and vehicles. Poorly controlled emissions and odours from plant or works may lead to valid complaints

### Do

- ✓ Sheet over lorries carrying dry materials to or from site.
- ✓ Keep to site speed limits.
- ✓ Use a wheel wash if it is appropriate.
- ✓ Make sure dust suppression systems are working and are effective on crushers and screeners.
- ✓ Report and Close Call it if work activities are causing poor air quality.

### Do not

- ✗ Burn materials on site without approval.
- ✗ Leave plant and vehicles running if not in use.
- ✗

This and other toolbox talks can be downloaded from:  
[www.southernshield.co.uk](http://www.southernshield.co.uk).

For further information please contact a member of your Environment Team

## Warm weather (page 1 of 2)



1MC12 - Stage Two - Main Works Civils for C2 and C3 Sectors

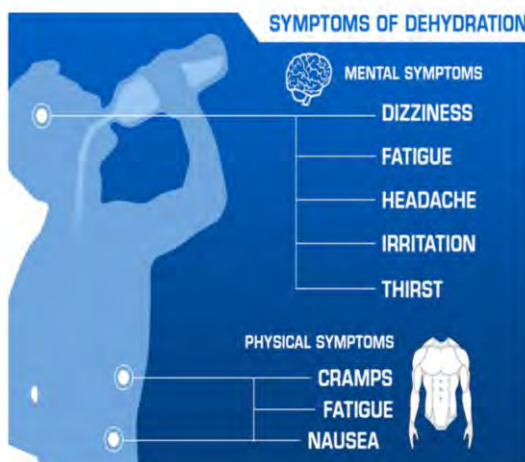
Document number: Add MIDP Number  
Revision number:

Toolbox Talk: Warm Weather

### Warm Weather

#### Dehydration

- Sweating helps maintain body temperature
- Must regularly replenish fluid lost through sweat
- Complications if long term dehydration



#### How dehydrated are you?

A quick way to test how well you're hydrated is to check the colour of your urine.



#### Stay hydrated

- Drink regularly throughout the day,
- Cool water is absorbed more quickly by the body than very cold or warm fluids
- Sports drinks help to alleviate potential heat cramps
- Avoid tea or coffee which increase urine output
- Avoid energy drinks as they have high caffeine levels

#### Sun Damage



- Apply sunscreen liberally and frequently
- Wear sunglasses
- Wear long sleeves, cover neck and head
- Stay in the shade when possible



## Warm weather (page 2 of 2)



1MC12 - Stage Two - Main Works Civils for C2 and C3 Sectors

Document number: Add MIDP Number  
Revision number:

---

Toolbox Talk: Warm Weather

---

### Fatigue

- Fatigue is mental and/or physical exhaustion
- Reduced ability to perform work or tasks safely and effectively.
- Poor sleep

### Potential Health Conditions – Heat Exposure

*If you develop any symptoms, seek support and move to a cool area. Overheating can be a more serious problem for those with underlying health conditions.*

#### Heat Cramps – loss of fluid and salts may cause cramps

- Often occurs hours after being in the heat
- Can be painful
- Commonly affect legs, arms, abdomen and back

#### Heat Exhaustion – body struggles to maintain temperature regulation

- Symptoms include headaches, dizziness, weakness, mood changes, nausea, fainting

*Must receive immediate medical attention – may lead to Heatstroke*

#### Heat Stress

- Body becomes dehydrated and unable to cool itself effectively
- Protective clothing and performing heavy work in hot and humid conditions
- If untreated may lead to more serious health conditions

*Prevent Heat Stress – stay hydrated, spend time in the shade*

#### Insect Bites / Stings

- Increased risk in warm weather
- Minor irritation

*Known allergic reaction or carry an EPI Pen – inform line manager and OH as soon as possible*



Visit [www.pamlife.co.uk/ekfb](http://www.pamlife.co.uk/ekfb)

Select **Sign up**

Register using your organisation code: **choose2**

**Setup your personal account**, using an email address of your choice (personal or work)

**Validate** your account

**Complete** your Wellness Assessment



**Log in to your free and confidential PAM Life account for tips on hydration, sleep, fatigue and healthy living.**

# Improvement Opportunities (IO)

## July statistics

During the month of July it's great to see the increased engagement and improvement of business and project IO's. The project IO's raised were more proactive in identifying and resolving issues.

Our suppliers contributed to over 8.4% of overall IO's raised during the month.

Improvement Opportunities are critical to our learning culture and to ensure everyone returns home safely every day.

Please do continue to submit your IO's and thank you for recognising the importance of your continued engagement.

### How to raise an IO

You can raise your IO's using our new system through the Octavius website.

## [Submit an IO on the Octavius website](#)

Top IO Originators in July	
Jonathan Blackman	31
Brian Cooper	19
Adam Millar	14
Ross May	13
Bobby Constantin	13
Top categories in July	
Site housekeeping	39
Access/egress/site security	33
Site welfare	29
Process and documentation	21
Personal health	20
Top projects in July	
OTW GEO Fareham cutting	51
A46 Binley construction	19
Boston manor painting works	18
Ryde Pier renewal	15
HV switchgear renewals	14

## Infrastructure Improvement Opportunities

Month	Total No. IOs	Total No. People Raising IOs
July	344	71
June 2022	425	80
May 2022	360	72
April 2022	251	61
How many did your site submit last month?	?	?



# SHEA performance summary

July 2022

**Accident Frequency Rate (AFR)** Days since the Last RIDDOR Accident: **139**  
 The Current Rolling AFR is: **0.08** against a threshold of 0.01

**Service Strike (SSFR)** Days since the last Service Strike: **17**  
 The Current Rolling SSFR is: **0.25**

**July**  
**Total Number IOs**  
**344**

**July**  
**No. Safety, Health & Environmental IOs**  
**292**

**July**  
**No. Business IOs**  
**N/A**

Reference Number	Date	Project	Description
<b>Injury</b>			
10542022-04-07	103/07/22	OTW Fareham	Machine controller sustained lacerations and bruising when his fingers were trapped by a lifting chain
<b>Service Strike</b>			
10602022-26-07	26/07/22	EHA Central Beds Flitwick Interchange	Water main was damaged when a machine tracked off it
<b>Property Damage</b>			
10552022-07-07	06/07/22	CP D&B Joints renewal	A TM installation vehicle was struck by a car trying to cut in front at the last minute during the slip road push installation
10642022-01-08	24/07/22	Herts FW Viaduct Road Ware	As a limb of a tree was cut down it was blown over the boundary fence and damaged a passing car
<b>TM incursion</b>			
10612022-29-07	28/07/22	CP Network Gantry Painting	Vehicle entered closure but exited before details could be obtained
10622022-29-07	28/07/22	CP Network Gantry Painting	Vehicle entered closure but exited before details could be obtained
10632022-01-08	28/07/22	CP Network Gantry Painting	Vehicle entered closure but exited before details could be obtained
<b>Near Miss / Close Call</b>			
10582022-25-07	25/07/22	Wessex Planned and Reactive – Waterloo Station	During excavation works a number of ammunition rounds were exposed – no injuries
<b>Environment</b>			
10502022-27-06	09/07/22	A46 Binley	Works were undertaken at a time not agreed with the EHO
10592022-25-07	23/07/22	A46 Binley	Minor diesel spill from an item of plant
<b>Drugs and Alcohol</b>			
10562022-11-07	11/07/22	A46 Binley	D&A non-negative result at induction

# Safety Advice

Action required following a serious incident



everyone  
home safe  
every day

## URGENT – quarantine certain Lithium-Ion LED work lights

Issued to: **Network Rail line managers, safety professionals and accredited contractors**

Ref: NRA22-04

Date of issue: 27/07/2022

Location: Northampton, North West & Central

Contact: [Ellen Wintle, Infrastructure Director, West Coast Mainline South, NW&C](#)



### Overview

Investigation of the fire which destroyed a building at Network Rail's Northampton depot on 28 June has indicated a particular model of LED site light may be the cause. Evidence shows the fire started where Lithium Ion batteries from a Ledlenser IF8R task light were being charged. The fire could have started from the charging cable/plug or the batteries themselves. It is clear that the initial fire was made more intense by the batteries.

The lights were fairly new but depot staff had already changed how and where they charged the batteries because they became hot. The team had stopped charging them in vehicles and were charging them in the depot stores, positioned vertically rather than flat side down to limit heat transfer.

This type of lighting falls outside the product acceptance process and is classified as an ancillary item.

The i-Store catalogue number for this light is 0111/122069 (and 0111/122068, a duplicate). It was added to the catalogue when standard products were refreshed in September 2021. Since then at least 79 have been purchased in i-Store. But some customers, and members of Network Rail's supply chain may have ordered others through another supplier.

There is no indication that other models of Lithium-Ion worklights have the same problem.

### Immediate action required

- Temporarily suspend purchase or use of any Ledlenser IF8R task lights.
- Quarantine all existing lights of this model. The battery should be removed from the light unit and both the light and battery should be placed in your usual quarantine area.
- Whilst in quarantine the battery must not be inside a metal container or allow contact with other battery terminals.

Part of our group of  
Safety Bulletins

Safety  
Alert

Safety  
Bulletin

Safety  
Advice

Shared  
Learning

# SAFETY ALERT



N°011  
[15 July 2022]

## MINI DIGGER OVERTURNED

### Leg and Ankle Injury

Business: Ringway Infrastructure Services - Hertfordshire  
 Date & Time: 11 July 2022 – 09:45hrs  
 Equipment: 1.8 t Mini Excavator SANY SY18C  
 Nature of incident: Leg and ankle injury caused by an overturned excavator

#### Circumstantial facts:

On 11th July 2022 a SCP highways team were carrying out footway reconstruction works on Rye Street, Bishop’s Stortford. The SCP operative was tracking his 1.8 t mini excavator along a broken up bituminous footway. The excavator overturned trapping the operator by his left leg.

Emergency first aid was given on site, but the IP was taken to hospital and later underwent surgery for the injuries sustained. The IP suffered leg injuries and also an open fracture on his ankle resulting in a RIDDOR reportable incident.

A full investigation is underway and further findings will be cascaded in due course.

In the interim, please ensure all method statements and safe system of work on plant movements are adequate to the task. Also ensure that seatbelts are being used **at all times**.

Site inspections and safety tours being carried out over the coming months need to focus on similar activities. An opportunity to take proactive action to prevent any similar incidents occurring.

David Campbell  
 Health, Safety and Environment Director



Confidential – property of VINCI Construction  
 This document is based on current information known at the time and could be subject to change based on new or different information



# SAFETY ALERT



N°013  
1st August 2022

## HIGH POTENTIAL INCIDENT

### Operative struck by falling scaffold toeboard

Division: Taylor Woodrow  
Country: UK  
Injured Party: Bricklaying Foreman  
Incident Details:

- Date of Incident: 27<sup>th</sup> July 2022
- Time: 14:00hrs
- Equipment/ Tools involved: Scaffold Material Loading Bay
- Nature of the injury: Cut to nose/face

#### Circumstantial facts:

On the 27<sup>th</sup> of July, a Scaffold contractor was asked to carry out some modifications to a material loading platform. The modifications were required as the existing arrangement was too narrow plasterboard sheets to be lifted into place.

Following an inspection of the area, a scaffold assistant was asked to install barriers below to prevent any unauthorised access to the area during the modification works. Prior to the barriers being installed, the scaffolder lifted the tip-over arm to assess the requirements for the adaptations. In doing so a toe-board became loose, falling approx. 8mtrs, striking the IP who was at ground level passing through the area.

The toe board hit the front of the IPs helmet in a glancing blow which tipped the helmet forward impacting the nose causing a cut to the nose/face.

#### Action (s) required.

- **PPE:** Ensure all operatives comply with the site PPE requirements – **“Safety Helmets Save lives”**
- **Inspections:** Check weekly scaffold inspections are being completed and that any identified defects have been reported.
- **Assess:** Review measures for protection from falling objects e.g., netting, scaffold shrink wrap or wire mesh screening
- **Access Routes:** Review access routes where they pass below materials loading bays and scaffold towers – Can another route be used?
- **Prevent Access:** Before carrying out any inspections/modifications to existing scaffold systems, ensure that the area is suitably secured to prevent unauthorised access
- **Review:** Scaffold clipping/clamping arrangements for edge protection to ensure toe boards are adequate secured. Are these sufficient?



Photo 1: Location 4<sup>th</sup> floor and material loading zones in the RCC



This incident highlights the importance of wearing the appropriate PPE. Had the IP not been wearing his hard, then this could have resulted in a fatality



David Campbell  
Health, Safety and Environment Director



# SAFETY ALERT



July 2022  
Ref 012

## REVERSING INCIDENT

### Low loader reversing incident

Division: Eurovia Surfacing  
 Country: UK  
 Date & Time: 13 July 2022 - 18.25hrs  
 Equipment: Low loader  
 Incident's detail: Low loader reversed into street light column

#### Circumstantial facts:

Two low-loaders were delivering surfacing plant and equipment to a site in Letchworth, Hertfordshire in readiness for resurfacing works to commence at 20:00hrs. Both low-loaders arrived at the location at around 18:23hrs and needed to find somewhere to safely park to wait for the road closure to be deployed. The low-loader involved in the incident drove past the site to a roundabout and then pulled over to carry out a reversing manoeuvre from the main road into a side road to turn his vehicle and wait for the traffic management to close the road.

He waited for a break in the busy traffic and drove onto the opposite side of the road to begin the reversing manoeuvre. The driver was aware that the rear wheels of the low-loader had mounted the pavement but continued to reverse the vehicle into the side road.

The driver heard a loud bang and immediately stopped reversing. He then drove the low-loader forwards to clear the public highway and parked in a layby further up the road and exited his vehicle to go and investigate what he had hit. He then witnessed the street light column lying across the road and a parked car which had been damaged by the falling street light column. The police were called and breathalysed the Eurovia low-loader driver at the scene which was found to be negative. The traffic management coned off the street light column and the police remained on site until it was made safe by a lighting engineer. The Divisional Fleet & Plant Manager arrived on site to carry out an immediate investigation and to arrange for the driver to be sent home.

The 4-way camera footage clearly showed the low-loader trailer mount the footway and continue to reverse towards the street light column which was set back from the roadside by approximately 1m. The driver made two attempts to try and reverse his vehicle into the side road from a busy main road with passing cyclists and pedestrians in the vicinity.

A 3<sup>rd</sup> party car was waiting on the main road to turn into the side road and the driver of the car decided that they had enough time to make the manoeuvre before the low-loader trailer entered the side road. The rear of the low-loader trailer hit the street light column with force causing a small explosion at the base and the column fell into the side road hitting the 3<sup>rd</sup> party car causing extensive damage to both vehicles. The driver of the car luckily escaped with no injuries.

#### Key points we have considered at this stage include:

- Better planning to only arrive on site when the traffic management has been safely deployed
- Better planning of vehicle movements – planning to reduce / eliminate the requirement for vehicles to reverse both on and off site.
- The availability and use of trained vehicle banksman, and whenever possible the 2<sup>nd</sup> low-loader driver to act as the nominated banksman.



Confidential – property of VINCI Construction  
 This document is based on current information known at the time and could be subject to change based on new or different information



# SKANSKA

04/08/2022 **Work related injury** 

**A1 Birtley to Coalhouse**

Incident Notification **Alert**  Information  Toolbox Talk 

Date and time of incident:	02/08/2022 00:00	Injury Severity:	Major/specified
Alert Author:	Shaun Dobson	Potential Severity:	Major
HSW lead:	Philip Matthews	Investigation Required:	Full
Operating Unit:	Cementation	Operational Disturbance:	Other cause

**What happened?**

A blockage occurred in the concrete lines during the blowing out process at the end of shift. In order to clear the blockage and following the release of air pressure, a second ball was inserted and the line re-charged with compressed air. After a number of failed attempts to clear the blockage the Pumpman commenced the sequence to release pressure from the system again.

The Pumpman turned off the air supply and opened the valves on the compressor followed by the air release valves on the blow out gun. No air was released from the open valves on the blow out chamber. It was not possible to read the air pressure gauge on the blow out gun due to a build up of grout on the dial.

Believing that all the air had been released from the system, the Pumpman then proceeded to release the over-centre clamp to remove the blowout chamber from the concrete hose. After a small movement of the lever there was an explosive release of pressure that blasted the IP with particles of concrete and water. The IP was conscious but was walking with difficulty with blood and grazes to his abdomen, groin, upper thigh, and hands. His PPE (trousers) and shirt were shredded.

After an initial assessment the IP was then safely moved to the compound facilities and received immediate attention and showered down to remove concrete. He appeared to be suffering from shock and confusion. The emergency services were called and he was taken to hospital where he received further treatment.

**Key investigation learning**

The immediate cause was that when opening the coupler to remove the blow out chamber the line was still under pressure which caused a significant release of stored pressure hitting the IP and knocking him back.

Other key findings are that the blow out chamber had been poorly maintained, the pressure gauge was unreadable and both valves were blocked with grout. There was no routine maintenance checks being carried out or recorded and defective equipment was not being reported to Site Management or put into quarantine.



# SKANSKA

## OU/Project Specific Learning Points

Procedures must be followed to rectify any faulty or defective equipment as soon as practicable in a safe and controlled manner. If defective equipment is unsafe to use or if there is any doubt on its safety, then it must be immediately removed from service until it is made safe to use.

A robust maintenance scheme must be in place and carried out by competent personnel. Records of maintenance activities must be maintained and made readily available at site. The scheme should include the following for each component of the concrete pumping process: Pre-Use checks/inspections must be carried out by a competent operator before putting equipment into service. All equipment requires daily inspection from a competent operator with regular servicing and maintenance by a competent person. Any defects and records of inspection need reporting in accordance with company procedures.

Cleaning the Blow Out Chamber: Ensure periodic inspection & maintenance of Pressure Gauge, Inspection of Blow Out Chamber, Inspection of valves for accumulations of concrete reducing capacity. "THE BLOW OUT CHAMBER MUST BE CLEANED AFTER EACH USE"

Ensure compliance to 43.02 PI RAMS - F027 - Concrete Pumping / Clearing Blockages: Do not use an additional sponge ball to try and clear a trapped ball.

## BU Considerations for Learning

All personnel should be made aware of the Procedures/Processes and RAMS for clearing blockages within the concrete lines and ensuring a robust maintenance regime is in place to ensure maintenance and cleaning of equipment.



Blow out Chamber involved in the incident



Maintained blow out chamber suitable to use



Location of incident

<b>Basic Risk Factor:</b>	<input type="checkbox"/> Defences	<input type="checkbox"/> Design	<input type="checkbox"/> Error Enforcing Conditions
<input type="checkbox"/> Housekeeping	<input type="checkbox"/> Incompatibility of Goals	<input checked="" type="checkbox"/> Maintenance Management	<input type="checkbox"/> Organisation
<input checked="" type="checkbox"/> Procedures	<input checked="" type="checkbox"/> Tools/Equipment	<input checked="" type="checkbox"/> Training	<input type="checkbox"/> Communication

<b>Distribution:</b>	<input type="checkbox"/> EMT/SMT	<input checked="" type="checkbox"/> All OUs/EFs	<input type="checkbox"/> Originating OU Only
<b>Action Required:</b>	<input checked="" type="checkbox"/> Brief	<input type="checkbox"/> Display	<input type="checkbox"/> Information Only



Audience: Siemens Mobility Limited, Rail Infrastructure

EHS/018/2022

# EHS Alert

Subject: False Widow Spider

Some of our trackside team working in Scotland have recently come across False Widow spiders. These spiders are now common in the UK and Europe and therefore may be found on other projects across the UK. False Widow spiders are not usually aggressive and they don't normally bite people. Although their bite does not appear to be lethal it can be very uncomfortable (similar to being stung by a wasp).

Common symptoms include:

- Feeling of numbness
- Severe swelling
- Discomfort
- Burning sensation

More severe reactions such as fever, nausea, headache, malaise, lethargy and even chest pains are uncommon. However, if you experience any of these then you should seek urgent medical advice.

**If you are bitten by a false widow spider the below steps should be followed:**

- Wash the area with soap and water to prevent infection
- Use a cold compress to minimise swelling
- Use bite spray or antiseptic cream to prevent infection and reduce discomfort and itching
- Antihistamines may be taken to counter any possible allergic reaction and anaphylactic shock
- The condition of the person should be monitored and if it deteriorates then they should go to A&E

**The following should be avoided:**

- Antibiotics: these should not be taken unless there is an infection (or definite risk of infection) – they will not help
- Try to suck or cut out 'poison' this will not work and is more likely to result in the wound becoming infected



Region: Scotland  
Project: Various  
Delivery Director: Campbell Braid  
Author: Ryan Henderson  
Date: 06/06/2022

For more information about this alert please contact [gavin.lindsay@siemens.com](mailto:gavin.lindsay@siemens.com)

Produced By EHS Department  
Siemens Mobility Limited, Rail Infrastructure  
Any queries please contact your local EHS Specialist

Restricted © Siemens Mobility Limited 2021. All Rights Reserved.  
Document is UNCONTROLLED if downloaded or printed.



UKI-RI-HS-TM-009  
November 2021 Issue 5

**SIEMENS**

Audience: Siemens Mobility Limited, Rail Infrastructure

EHS/019/2022

# EHS Alert

Subject: Moving around site – Mobile Phone Use.

## Moving around site – Mobile Phone Use.

### HEADS UP PHONES DOWN!

Recently the number of reports of individuals using a mobile phone while moving around site has increased.

Using a phone whilst walking around and still being fully aware of your surroundings is a lot harder than it sounds. When your eyes are looking at the screen or you're focused on talking to the person on the other end, it makes it difficult to spot the obstacles that could result in trips and falls, or even lead to a more serious injury (e.g. being hit by vehicle as the person walks into the road without checking for traffic).

### REMEMBER:

- While moving around site, texting or talking on the phone are prohibited.
- If you need to use your phone, find a safe location to stop and ensure you're not causing any further hazards for others.
- Do not use your headphones while moving around site.
- Be fully aware of your surroundings

That text/call can wait until you're in a position of safety; always remember to put safety first!



### Discussion Points

1. Is this text/call essential?
2. Is there a safe place to stop and take the call or read the text?
3. Are you aware of your surroundings?

Region: Chippenham  
Project: Freight and Product

Steve Barry - Delivery Director  
Jo Cornish – EHS Manager  
Charlotte Bridger - Author

Add contact information  
i.e. for more information about this report please contact [Charlotte.bridger@siemens.com](mailto:Charlotte.bridger@siemens.com)



Produced By EHS Department  
Siemens Mobility Limited, Rail Infrastructure  
Any queries please contact your local EHS Specialist

Restricted © Siemens Mobility Limited 2021. All Rights Reserved.  
Document is UNCONTROLLED if downloaded or printed.

UKI-RI-HS-TM-009  
November 2021 Issue 5

If you have any feedback or if you would like to contribute to the next issue of **STOPThink!** please contact:  
[anjni.thakrar@octaviusinfrastructure.co.uk](mailto:anjni.thakrar@octaviusinfrastructure.co.uk)

**24 SHEA hotline:**  
**+44 (0)1737 944 720**

Octavius Infrastructure  
Fourth floor, 45 London Road, Reigate RH2 9PY

+44 (0)1737 944 830 [hello@octaviusinfrastructure.co.uk](mailto:hello@octaviusinfrastructure.co.uk)  
[octaviusinfrastructure.co.uk](https://www.octaviusinfrastructure.co.uk)



**STOP**  
**Think!**

**August 2022**